

GeoAutomation - The Mobile Mapping System

Imagine a future in which you can create a geo-referenced virtual world by simply driving down the road! With McElhanney's Mobile Mapping System, GeoAutomation, that future is here.

This 14 camera, vehicle mounted system, can generate high resolution, geo-referenced, digital frame imagery every 60 cm. Using pixel correlation technology, ground control and photogrammetric triangulation, accuracies to 1cm-2 cm (x, y and z) can be achieved. Using only GPS, 20 cm - 30 cm can be achieved.

The processed imagery is easily integrated into Auto CAD, Microstation, ArcGIS and other CAD systems providing a valuable resource to Asset Managers, Engineers and Designers, Mapping and GIS Specialists, City Inspectors and Urban Planners. The system is simple, fast and economical.



Multi images with processed single image feature point cloud

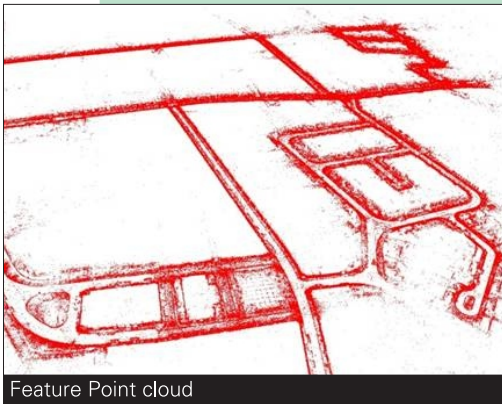
Improve productivity exponentially by taking a virtual tour through the cityscape - tagging objects, mapping locations, determining conditions, and taking accurate survey measurements - all from the comfort and safety of your office workstation.

Applications

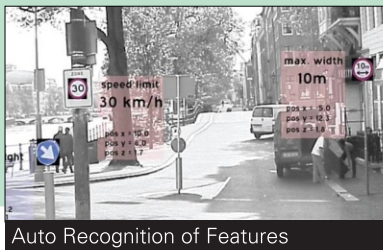
- Asset Management: Locating, Measuring, Identifying and Inspecting
- Condition Assessment: Surface Distress; Asset and Property Evaluation; Code Compliance
- Survey Design / Build
- Facilities Management
- Forensic Investigation
- Virtual Site Visits
- 3D Modeling and Video

Benefits

- Guaranteed accuracy
- Can reduce survey costs up to 40%
- Survey and collect from your Workstation
- Collects all assets in one pass
- Easy to reprocess to greater accuracy
- Saves time and money, and improves safety
- Allows virtual visits at any time



Feature Point cloud



Auto Recognition of Features



Inquiries:

For further information on GeoAutomation, please contact:
 Paul Currie
 (604) 694 2259 or
pcurrie@mcelhanney.com



Services

Inquiries

The McElhanney Group Ltd.

Services including project planning, monitoring and evaluation, design and specification, procurement, construction management, operations, and training are provided in the specialized fields of:

Consulting Engineering

- Coastal and River Engineering
- Exploration Permit Applications
- Sewage Collection and Treatment
- Storm Water Management
- Structures
- Traffic/Transportation
- Urban Development Planning
- Water Supply and Treatment
- Watershed Restoration Programs

Environmental Services

- Environmental Impact Assessments
- Mitigation and Compensation Planning and Implementation
- Project Planning and Regulatory Approvals
- Environmental Supervision and Monitoring

GIS and Mapping

- 3D Visualization and Web-Based Mapping
- Cadastral and Parcel Mapping
- Data Conversion and Structuring
- Digital Orthophotography
- Digital Photogrammetry
- Geographical and Land Information
- LiDAR
- Software Development

Remote Sensing

- Customization
- Image acquisition
- Presentation plotting
- Processing and analysis

Surveying

- Cadastral
- Consulting and Quality Control
- Engineering/Construction Layout
- Geochemical
- Geodetic/Control/GPS
- Microwave Path
- Route Location
- Topographic
- Volumetric
- Wellsites and Pipelines

McElhanney Consulting Services Ltd.

E-mail: info@mcelhanney.com
Website: www.mcelhanney.com/mcsl

CANADA

Calgary, Alberta

206 - 5 Richard Way SW
Calgary, Alberta T3E 7M8
Tel 403 262 5042
Fax 403 246 3337

Campbell River, British Columbia

1307 Shoppers Row
Campbell River, BC V9W 2C4
Tel 250 287 7799
Fax 250 287 7662

Canmore, Alberta

203 - 502 Bow Valley Trail
Canmore, Alberta T1W 1N9
Tel 403 609 3992
Fax 403 609 3989

Courtenay, British Columbia

495 Sixth Street
Courtenay, BC V9N 6V4
Tel 250 338 5495
Fax 250 338 7700

Cranbrook, British Columbia

34 - 11th Avenue South
Cranbrook, BC V1C 2P1
Tel 250 489 3013
Fax 250 489 4522

Duncan, British Columbia

202 - 5855 York Road
Duncan BC V9L 3S3
Tel. 250 748 3335
Fax. 250 748 6279

Edmonton, Alberta

138, 14315 - 118th Avenue
Edmonton, Alberta T5L 4S6
Tel 780 451 3420
Fax 780 452 7033

Fort St. John, British Columbia

8808 - 72nd Street
Fort St. John, BC V1J 6M2
Tel 250 787 0356
Fax 250 787 0310

Kamloops, British Columbia

293 - 1st Avenue
Kamloops, BC V2C 3J3
Tel 250 374 2200
Fax 250 374 2314

Maple Ridge, British Columbia

3 - 21409 Lougheed Highway
Maple Ridge, BC V2X 2R8
Tel 604 466 4881
Fax 604 466 4891

Nanaimo, British Columbia

Suite 1, 1351 Estevan Road
Nanaimo, BC V9S 3Y3
Tel 250 716 3336
Fax 250 716 3339

Penticton, British Columbia

102 - 130 Nanaimo Avenue W
Penticton, BC V2A 8G1
Tel 250 492 7399
Fax 250 492 5488

Prince George, British Columbia

1633 First Avenue
Prince George, BC V2L 2Y8
Tel 250 561 2229
Fax 250 563 1941

Smithers, British Columbia

3907 4th Avenue
Smithers, BC V0J 2N0
Tel 250 847 4040
Fax 250 847 4160

Surrey, British Columbia

13160 - 88th Avenue
Surrey, BC V3W 3K3
Tel 604 596 0391
Fax 604 596 8853

Terrace, British Columbia

1 - 5008 Pohle Avenue
Terrace, BC V8G 4S8
Tel 250 635 7163
Fax 250 635 9586

Vancouver, British Columbia

100 - 780 Beatty Street
Vancouver, BC V6B 2M1
Tel 604 683 8521
Fax 604 683 4350

SE ASIA

Jakarta, Indonesia

Jl. Pejaten Barat II No.20, Unit A
Jakarta Selatan 12510
Tel 62 21 7179 3137
Fax 62 21 7179 0361
E-mail ggoncalves@mcelhanney.com



McElhanney