The background of the slide is a dark blue map with various data points and lines. There are several blue circles of varying sizes scattered across the map, some of which are connected by thin blue lines. The map appears to be a geographical representation with some data overlay.

Leveraging Open Data to Engage Citizens, Enhance Public Services & Decision Making

URISA – BC Chapter

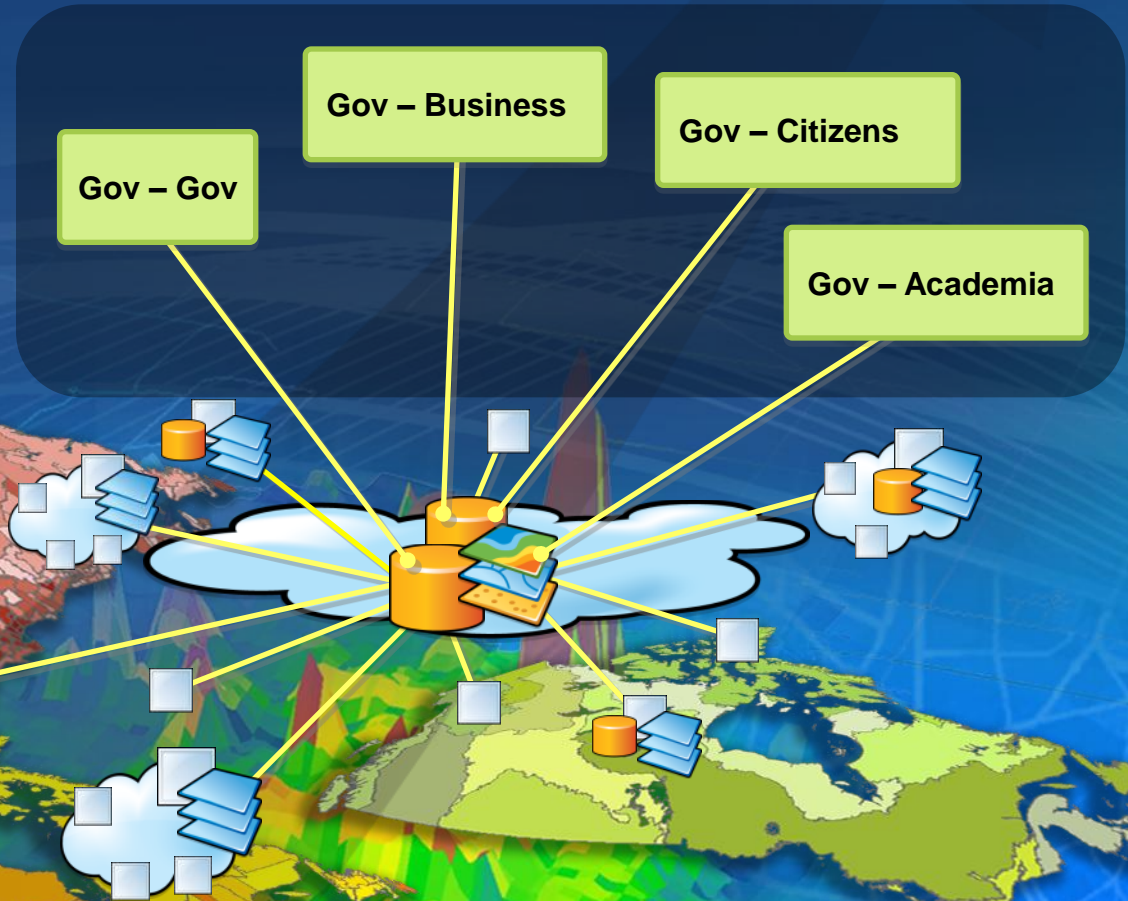
Presented by: Alex Miller

Our Goal is Accessible Geographic Knowledge

... A Distributed Network of Systems & Services

Enabled by Open Data
And Policies

GIS Applications



... Integrating National, Regional & Municipal Geographic Knowledge

Why Open Data

- e-democracy
- e-participation
- Increase accountability into the decision-making process
- Better service delivery
- Reduce operational costs through citizen self-serve capabilities
- Increase transparency into the vast repositories of public information that's available

GIS on the Web is Changing

Easy, Accessible & Collaborative

Enabled By

- Cloud Architecture
- Web Services
- Mashups
- Crowd Sourcing
- Open Data Sharing Policies

... and GIS Servers

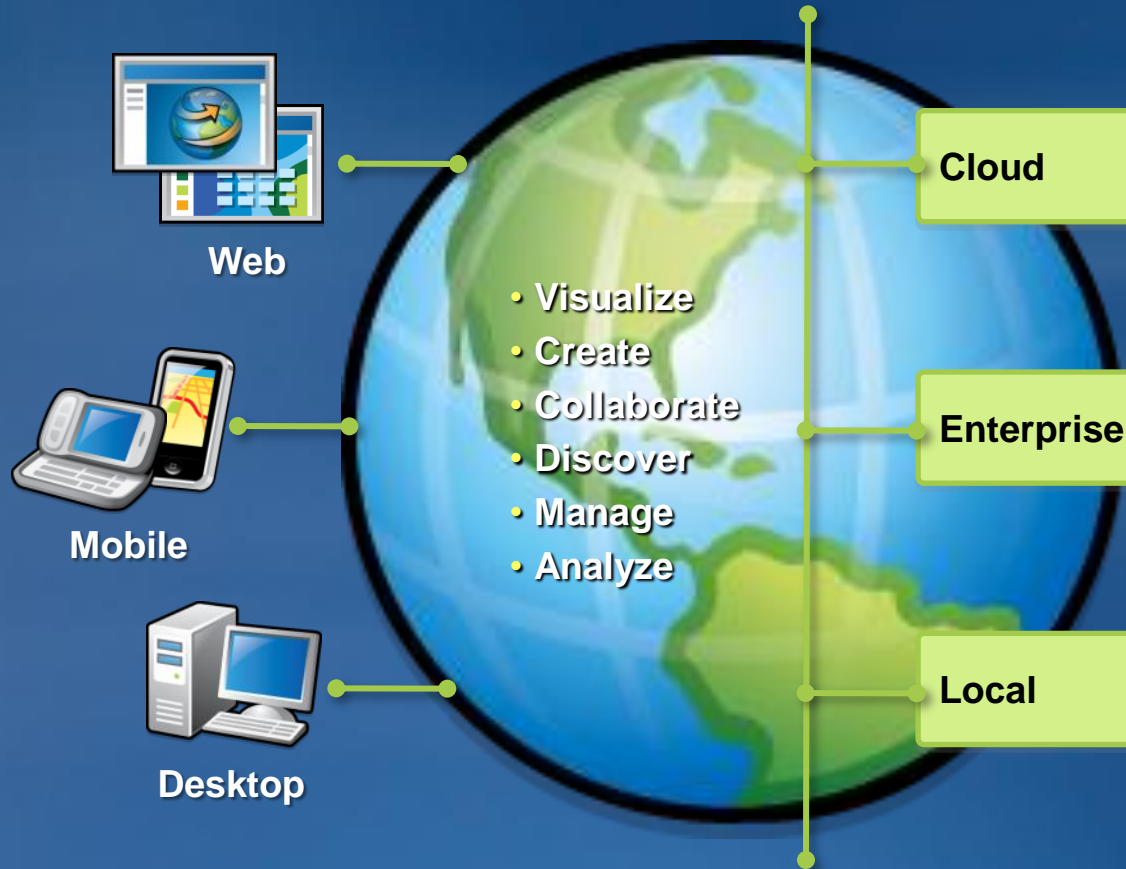


Richer, New Styles and Techniques

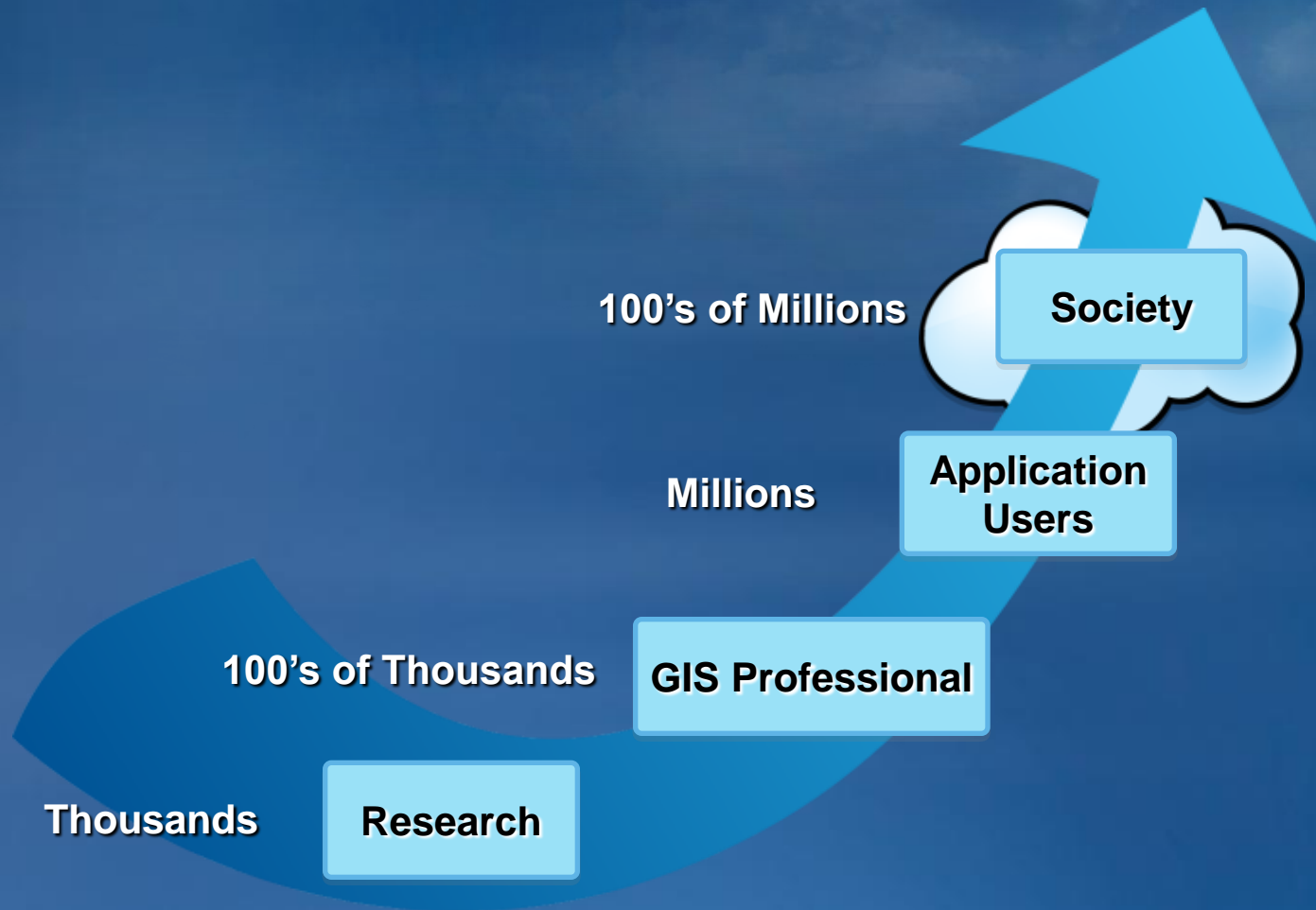
GIS Today

A Pervasive System for Using Maps & Geographic Information

Easier, More Powerful & Everywhere



Distributing Geographic Information Everywhere



Many New Applications

Open Government



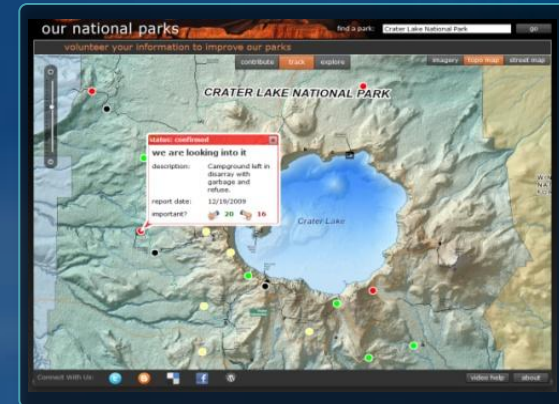
USA Government

Citizen Science



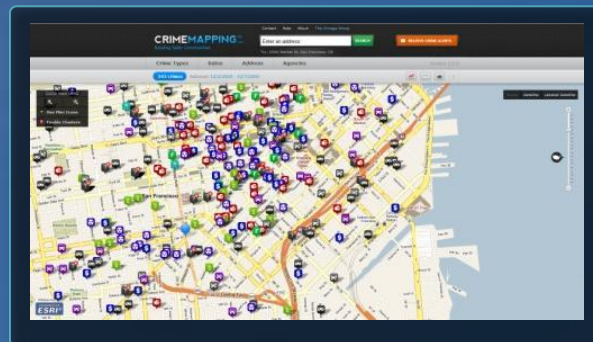
Cornell University

Citizen Reporting



NPS

Crime Mapping



iPhone App's



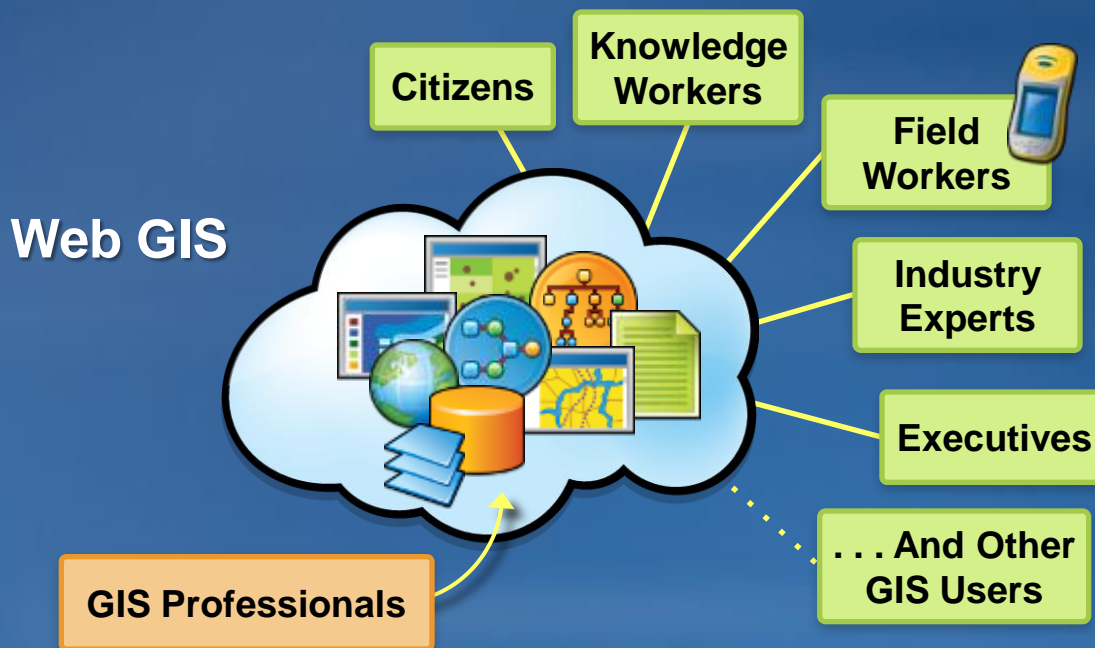
Philadelphia

Field Workforce Location



GIS on the Web

- Serving two-way, dynamic content
- Makes it accessible to lay users
- Harnesses public opinion in real time
- Allows large scale collaboration among amateurs & experts
- Enables Volunteered Geographic Information (VGI)



VGI: A Major Focus

Engaging Citizens in Data Collection & Civic Action

- Observations
 - Conditions (i.e. potholes)
 - Delinquent Behavior (i.e. graffiti)
 - Citizen Science (i.e. bird sightings)
 - Events (i.e. road accidents)
- Opinions & Feedback
- Systematic Data Collection

Every Citizen
is a Sensor



Issues

- **Ownership & property rights**
- **Privacy**
- **Data accuracy & consistency**
- **Publishing Updates**
- **Cost of support**
- **Loss of trading power**

Beyond the Barriers

- Licensing & Liability
 - GeoConnections: Best practices approach to licensing

BEST PRACTICES FOR SHARING SENSITIVE ENVIRONMENTAL GEOSPATIAL DATA

Version 1.0
2010

Prepared for:
Natural Resources Canada
GeoConnections



Prepared by:
AMEC Earth & Environmental
a division of AMEC Americas Limited

A screenshot of the GeoConnections website homepage as seen in a Mozilla Firefox browser window. The browser address bar shows "http://www.geoconnections.org/en/index.html". The website has a blue and yellow color scheme. At the top, it says "GeoConnections" and "Mapping the future together online". Below that are navigation links for Home, Search, Contact Us, Help, and Français. A main navigation bar includes "HOME", "Public Safety & Security", "Public Health", "Aboriginal Communities", "Environment", and "Developers". The page content is organized into several columns. On the left, there's a "What are you looking for?" section with a search icon and a list of categories like "The Discovery Portal", "Other Sources", and "Send to a colleague". The middle column features a "Success Story" about GeoTango, a "GEOIDE Market Intelligence Portal" announcement, and a "Privacy Commissioner Seeks Information about Street Level Photography Available Online" article. The right column has a "Welcome to GeoConnections" message, a "FOCUS ON: Earth Observation essential for geohazard mitigation" section, and "News Flash" and "Upcoming Events" sections. At the bottom right, there's a "USEFUL TIPS FOR" and "RESOURCES & TOOLS" section. The footer includes "Last Modified: 2010-04-22 Important Notices" and the "Canada" logo.

Open GIS Data in Action





The screenshot shows a Mozilla Firefox browser window displaying the GEOweb website. The browser's address bar shows the URL <http://www.geoweb.dnv.org/>. The website header includes the logo "GEOweb" and navigation links for "feedback", "about", and "legal". The main content area features a large background image of a bridge at night with the text "District of North Vancouver's GIS Website" and "Open Data | Free Maps | Rich Applications". A specific bridge is identified as the "Iron Worker's Memorial Bridge". Below this are four navigation buttons: "DOWNLOAD" (Open data and free maps), "APPLICATIONS" (Specialized mapping applications), "DASHBOARD" (Real-time municipal statistics), and "INSIDE" (Contact and support).

GEOweb [feedback](#) [about](#) [legal](#)

District of North Vancouver's GIS Website

Open Data | Free Maps | Rich Applications

Iron Worker's Memorial Bridge

DOWNLOAD	APPLICATIONS	DASHBOARD	INSIDE
			
Open data and free maps	Specialized mapping applications	Real-time municipal statistics	Contact and support

Done

Questions?

Thank You

