

The image is a movie poster for 'Mad Max: Beyond the Border'. It features a central male character with spiky hair and a beard, looking intensely forward. Behind him is a female character with long, flowing blonde hair and a headband, holding a crossbow. To the right, another character is seen riding a motorcycle. The background is a dramatic, orange-hued sky. The overall style is a detailed, painterly illustration.

GIS in 2020:

Mad Max, Beyond Geodome!

Chris North, M.Sc.

Opinions & Ideas expressed are those of the presenter



GIS in 2020:

Mad Max, Beyond Geodome!

Chris North, M.Sc.

Opinions & Ideas expressed are those of the presenter

WESTNEY RD. & BAYLY ST.

ONTARIO

ONT
FEB 16
0212320C

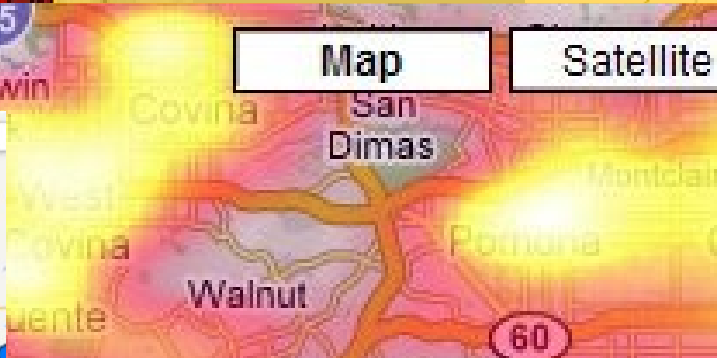
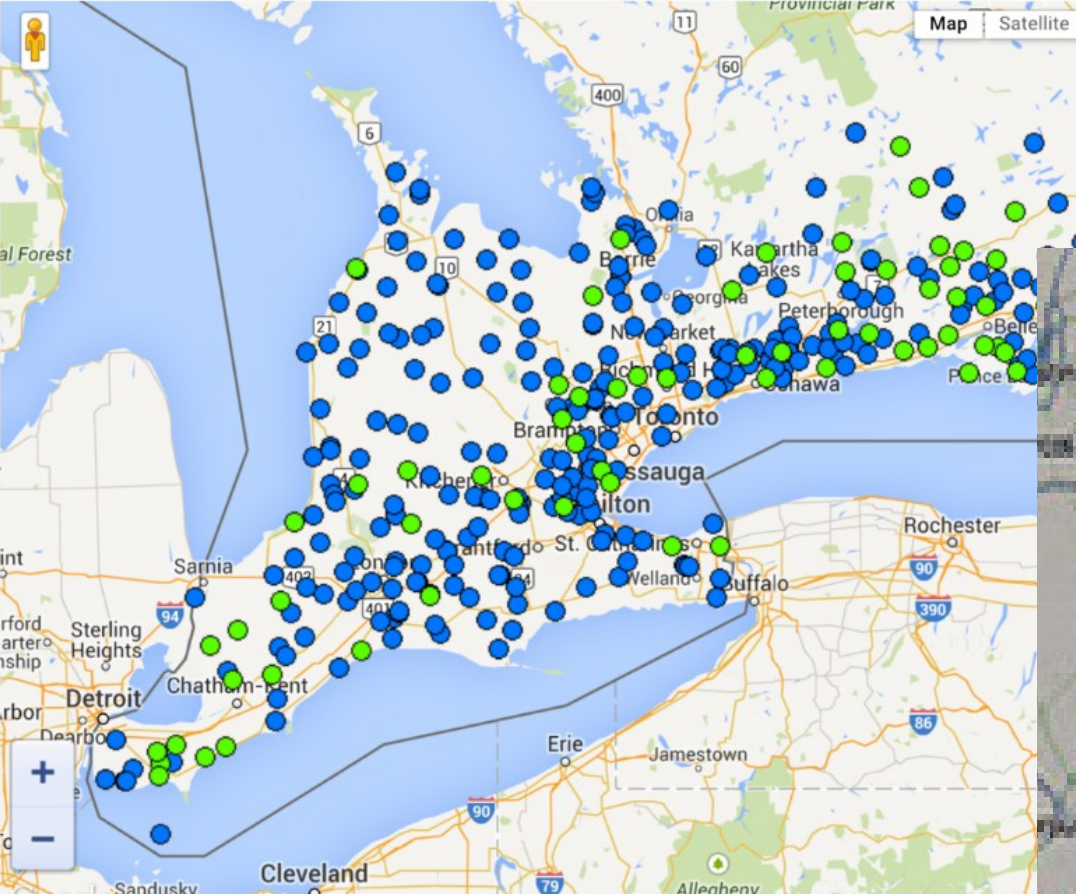
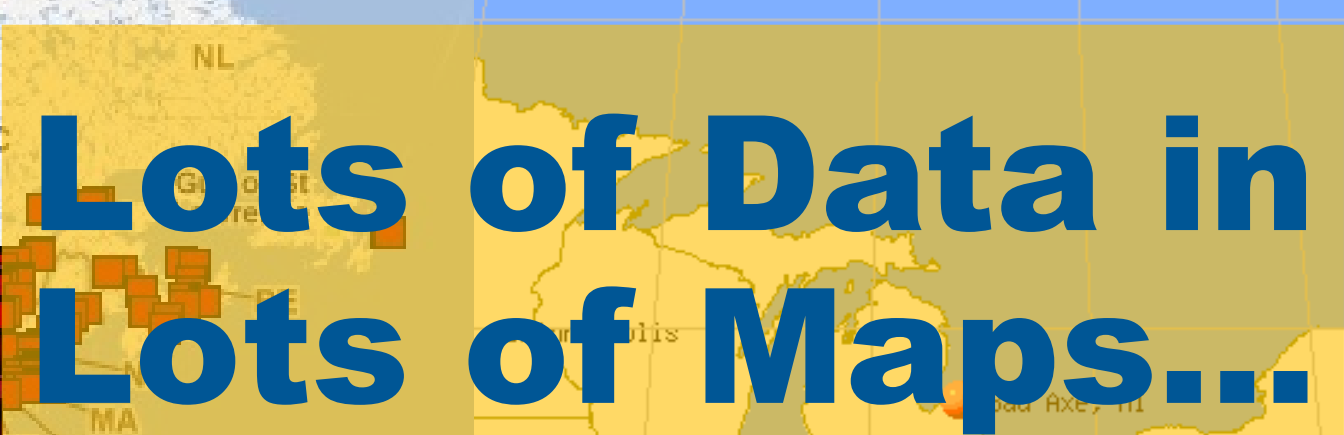
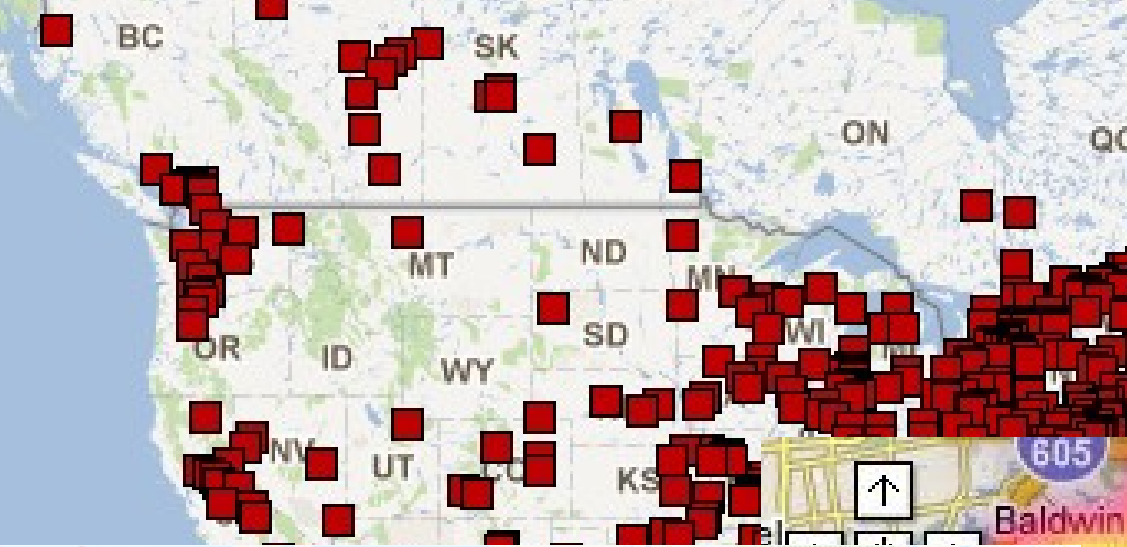
GIS GEEK

AJAX *mazda*.com

**In 2020 Most GIS
Have failed...**



Lots of Data in Lots of Maps...





... On Everything ...

**... But No
Information...**



The Four Horsemen...

Complexity



Stagnation



Isolation



Complacency



Complexity

A 3D rendering of a complex maze with many paths and dead ends, symbolizing complexity. The maze is composed of light gray walls and dark gray paths, receding into the distance. The word "Complexity" is written in large, bold, white, sans-serif font across the top center of the image.

GIS-NET3 BETA **Public**
 Department of Regional Planning

Map Tool: Pan **Getting Started** Enter an APN or Address with city or zip code Search ? @

Map Layers List

Layers Legend

Layer Name Visible

- Operational Layers
 - GIS Data
 - DRP Field Office
 - DRP Field Office Service Area (Identifiable on Safety Related Stations)
 - Safety Related Stations
 - Census Tract (2010)
 - Agricultural Opportunity Area
 - Community Standards District (CSD)
 - CSD Area Specific Boundary
 - Equestrian District (EQD)
 - Transit Oriented District (TOD)
 - Setback District Setbacks
 - Significant Ridgelines
 - Rural Outdoor Lighting District (Dark Skies)
 - Rural Outdoor Lighting District Changes
 - Zoned District (ZD)
 - Calvo Exclusion Areas
 - Supervisory District
 - ZIP Code
 - Town Council Area

Filter Layers: Clear

Search and Locate Tasks

Identify Query Location Parcels Select/Search Enter or choose name... Add Remove Go To

Named Extents/Bookmarks

LA County Bing Aerial Labeled Bing Maps LA County Aerial '11

I Want To...

Digital Atlas of Roman and Medieval Civilizations

Find Place | Print

Results

Map Contents

- Bishoprics
- Cities and Settlements
 - Cities & Settlements
 - Misc. Collections
 - Rats
 - Shipwrecks
 - Universities
 - Flanders
 - Fair & Trade
 - Hansa
 - Angevins & Capetians
 - Burgundy C14-C15
 - Spanish Reconquista
 - Eastern Europe
 - France Dioceses
 - Crusader
- Roman Roads
 - Roman Roads
- Roman Features
 - Church
 - Temple
 - Villa
 - Market
 - Mine
 - Pass
 - Production
 - Route
 - Fort
 - Wall
 - Bridge
 - Aqueduct
 - Canal
 - Dike
- Medieval Kingdoms
 - Kingdoms & Cities (ca. AD1450)

©CGA@Harvard

Stagnation



From: A GIS Manager
Sent: Wednesday, February 18, 2015 1:31 PM
To: A GIS Geek At Esri Canada
Subject: 2015 GIS Goals

Our goals at this time are all related to the GIS Maintenance project (which, from a resource perspective, represents a large portion of the business area's pot next fiscal).

- Move off of ArcGIS 10.0 (to 10.2.x); change to using Web Adaptor
- Move off of Geocortex Flex Viewer (to HTML5) and update Essentials
- Move off of Windows Server 2008 (to 2012 R2); get new infrastructure

On a similar note, there are no top initiatives for 2015 other than to continue to maintain and operate the current set of applications/services. All the other projects (at least for this business area) are fairly minor updates/enhancements.

YOU OK?



**I SHOULD'VE TOLD YOU
I WAS STOPPING.**

Isolation



We Became The Folded Arms Gang





Stuck "Inside the Box"



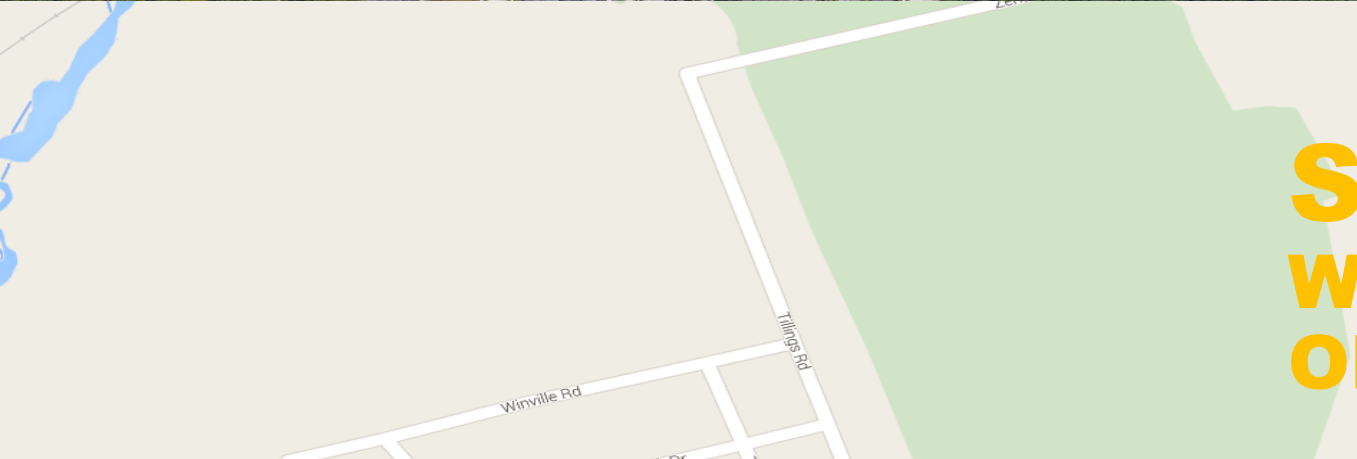
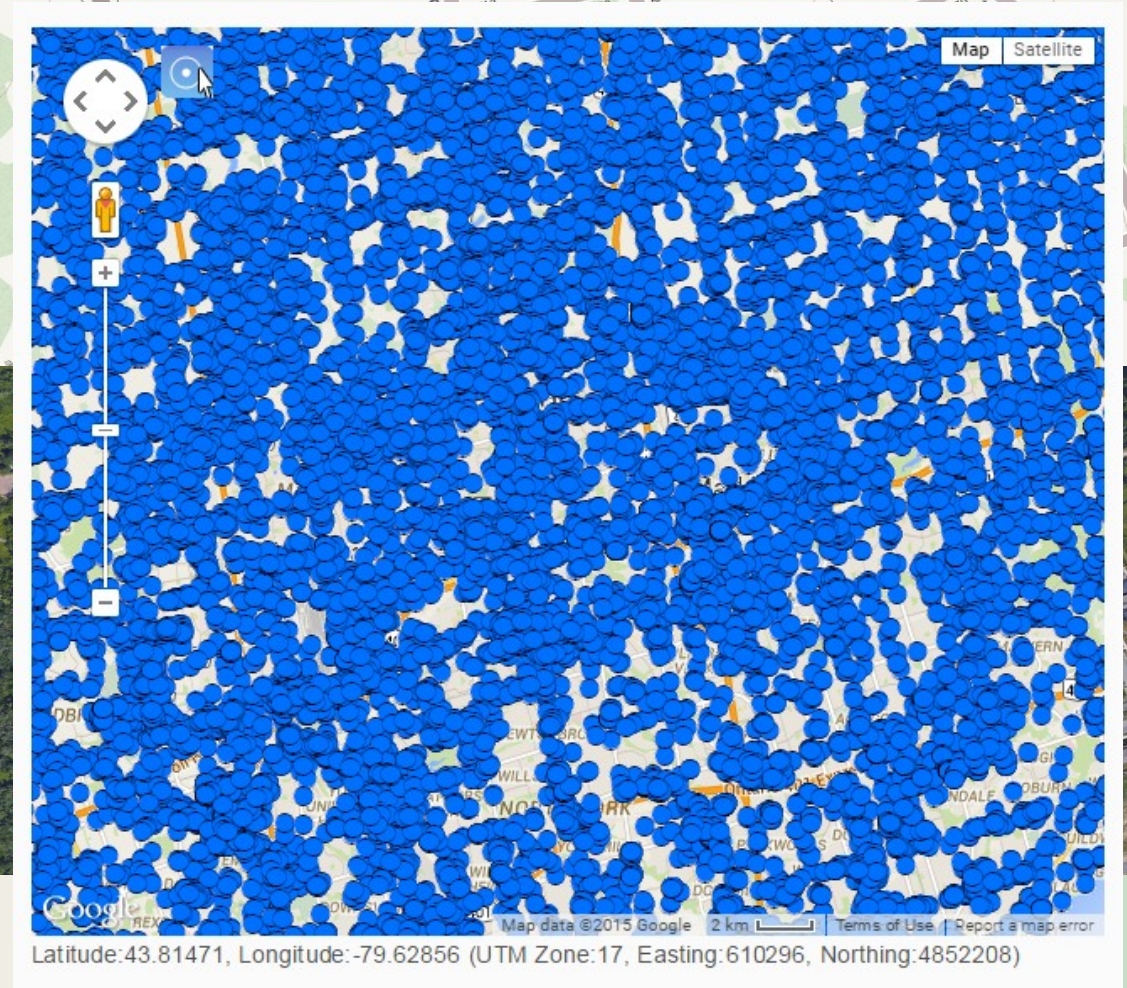
**DO-IT-YOURSELF
Pig Roasts
327.3311**

Complacency





Or this?



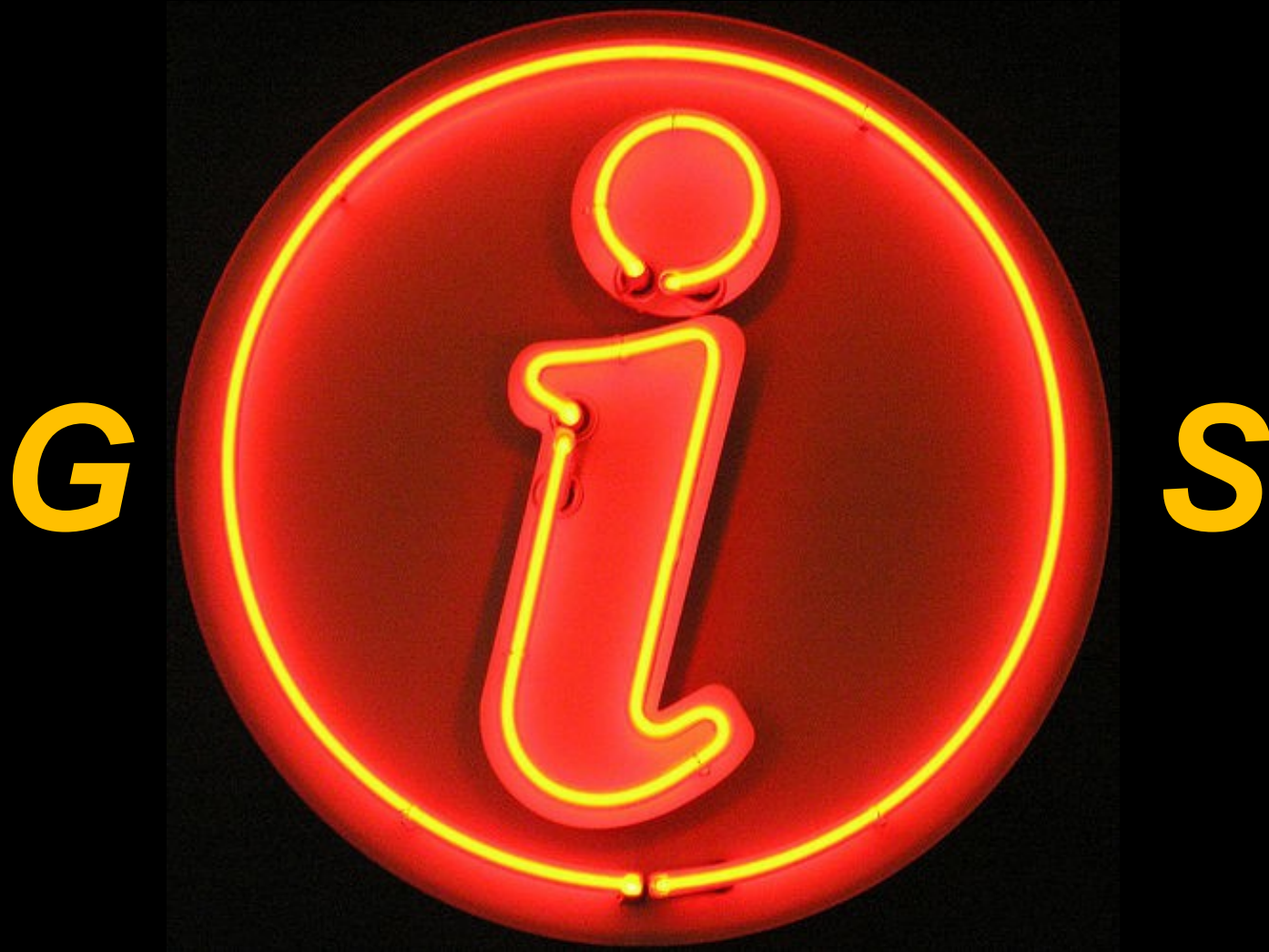
Stagnation:
When did this become
OK?

But...




**The Light
Hasn't
Flickered Out
Completely...**


What does the “i” stand for?



Because it determined who survived!



**Geographic
Infrastructure
System**

A circular arrangement of eight hands, each holding a different colored puzzle piece. The hands are positioned around the perimeter of the image, with the puzzle pieces meeting in the center. The background is a bright blue sky with light, wispy clouds. The text "Geographic Integration System" is centered in the middle of the puzzle pieces.

**Geographic
Integration
System**



**Geographic
Innovation
System**

The Survivors Evolved Their GIS...

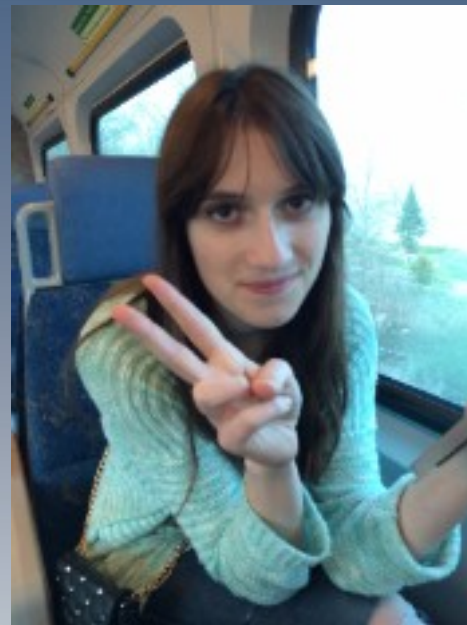
Innovation

Integration

Infrastructure

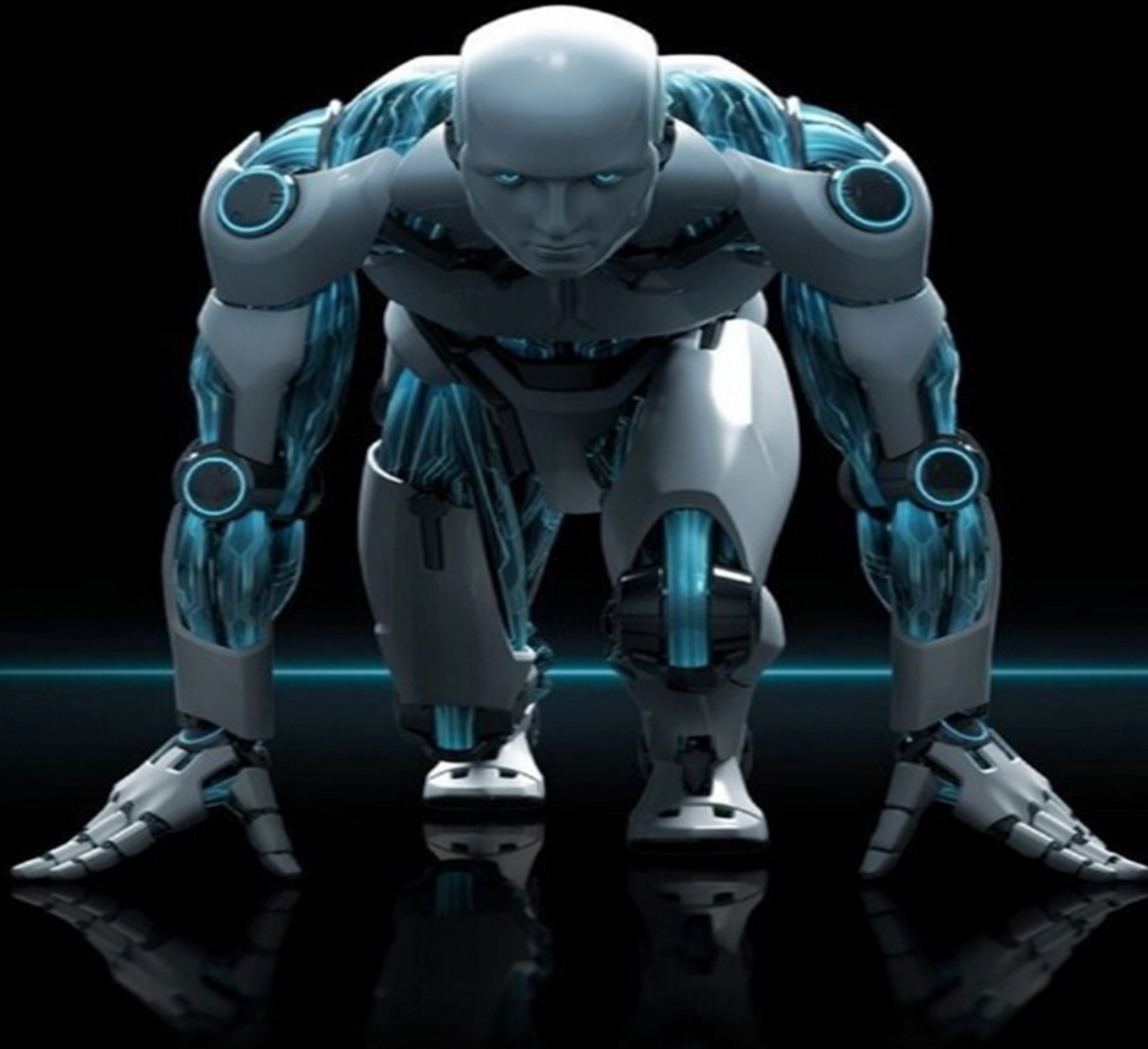


Generations...

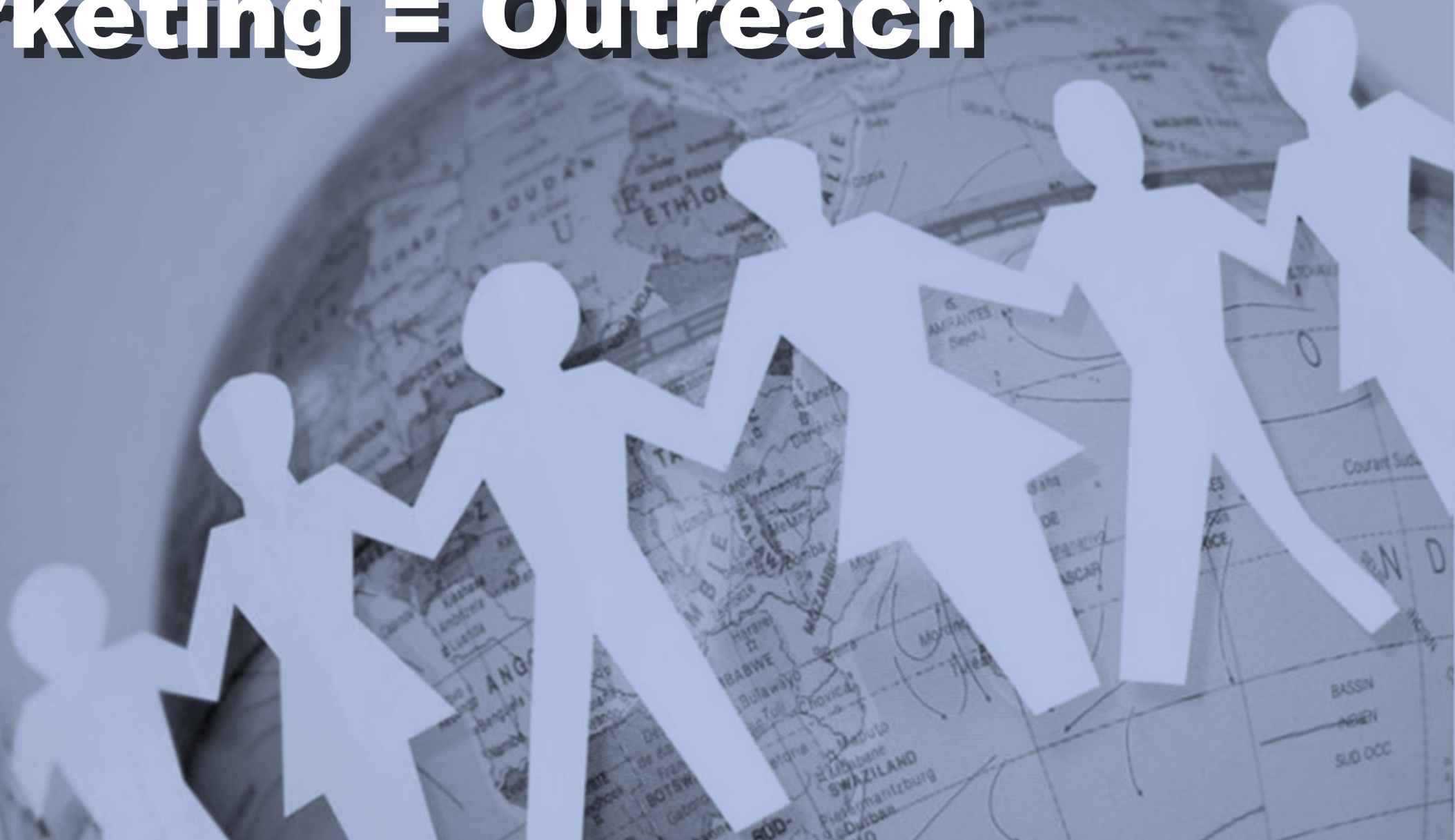


***"A Business has only
two primary functions:
Marketing and
Innovation"***

- Peter Drucker



Marketing = Outreach



Innovation Drives GIS Success



**Inside GIS & Throughout the
Organization**

Empowerment

Who & Why?



How?



Democratize



Simplicity

Simplicity

- Know your customers
- Do what customers need
- Greatness
- Focus on *Value*

Simplistic

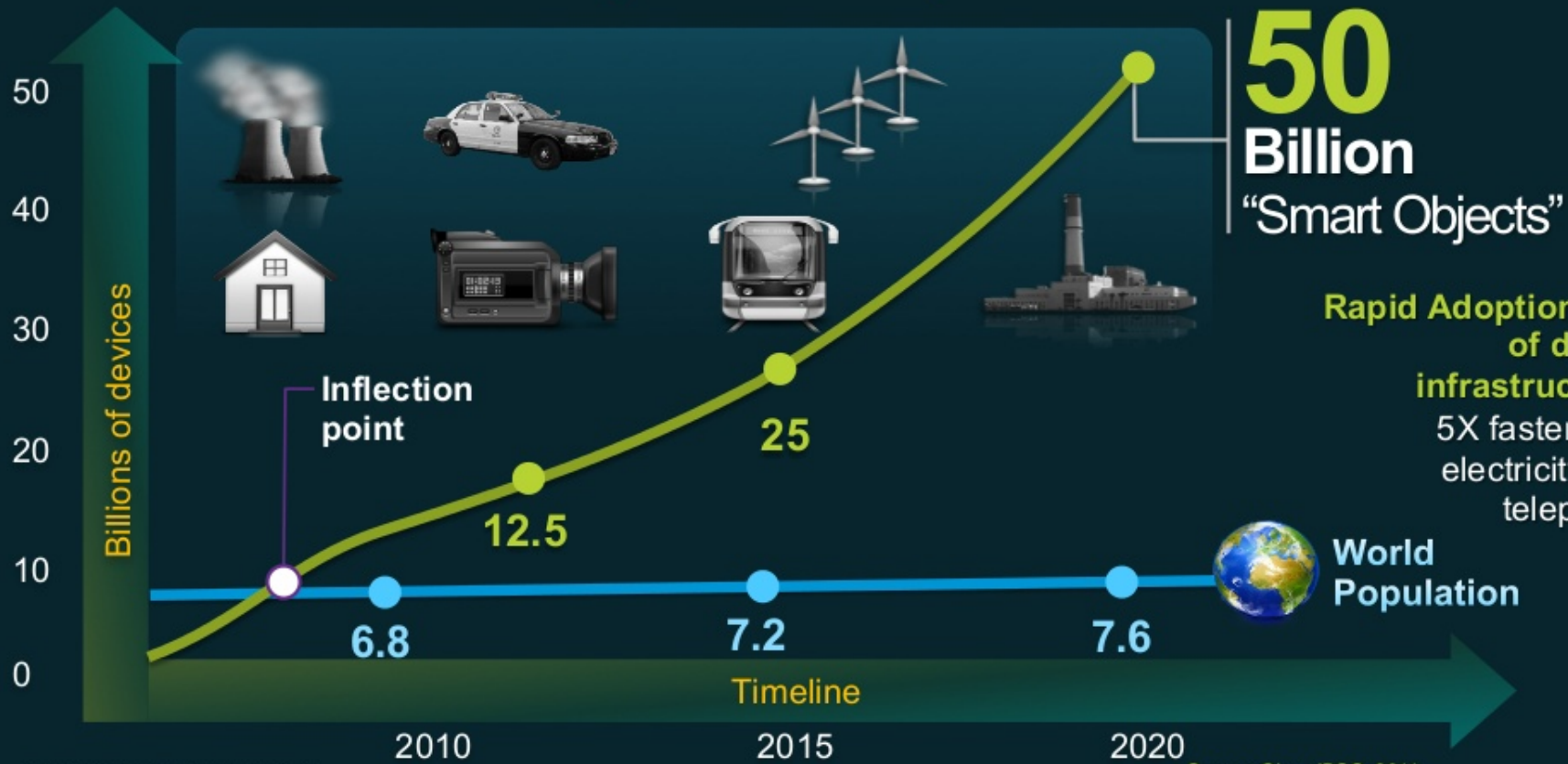
- Know your own business
- Do what worked before
- Good Enough
- Focus on *Cost*

Easy for You

Easy for Them

The Internet of Things

The Internet of Things is Already Here





***By 2018, Data created by IOT
devices will reach
403 trillion gigabytes a year***

A scenic landscape featuring a winding asphalt road with white dashed lines leading into the distance. The road is flanked by golden-brown grass on the left and green grass on the right. In the background, there are rolling hills, a small house on the left, and snow-capped mountains under a dramatic sky with dark blue and grey clouds on the left, and a bright yellow and orange sunset on the right. The sun is low on the horizon, creating a lens flare effect.

The Road Ahead Is Up To Us

***“The best way to predict
the future is to create it.”***

- Peter Drucker