

Moving GIS into the Enterprise

Bill Johnstone
Spatial Vision Group Inc.



Moving GIS into the Enterprise:

The Theory: Principles for Enterprise Architecture

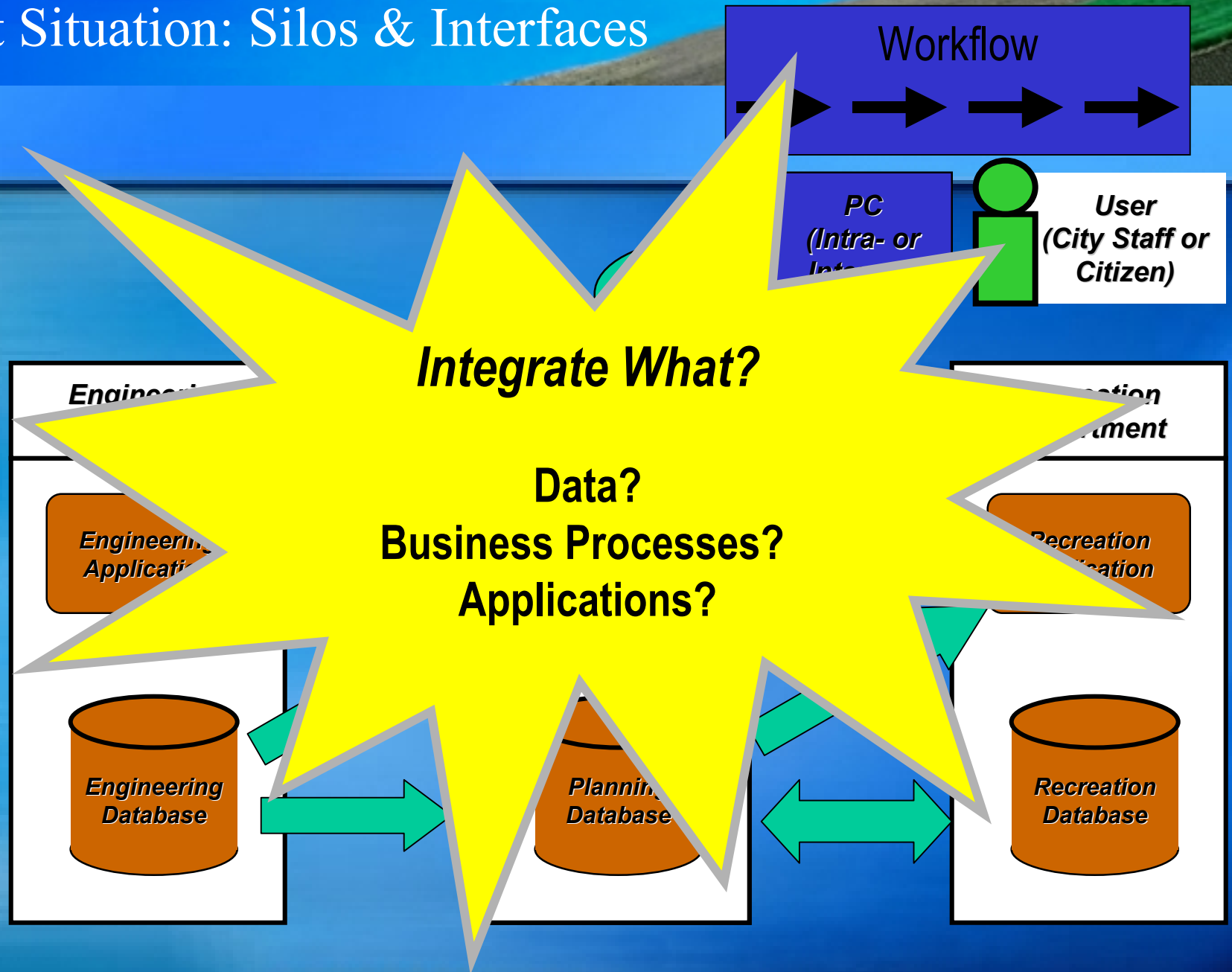
- Porter's Value Chain (Business View)
- The Zachman Framework (Systems View)
- Enterprise Architecture Design (EAD):
 - → Enterprise GIS Architecture:
 - Organization & Personnel
 - Data
 - Applications (& Processes)
 - Information Technology

Moving GIS into the Enterprise:

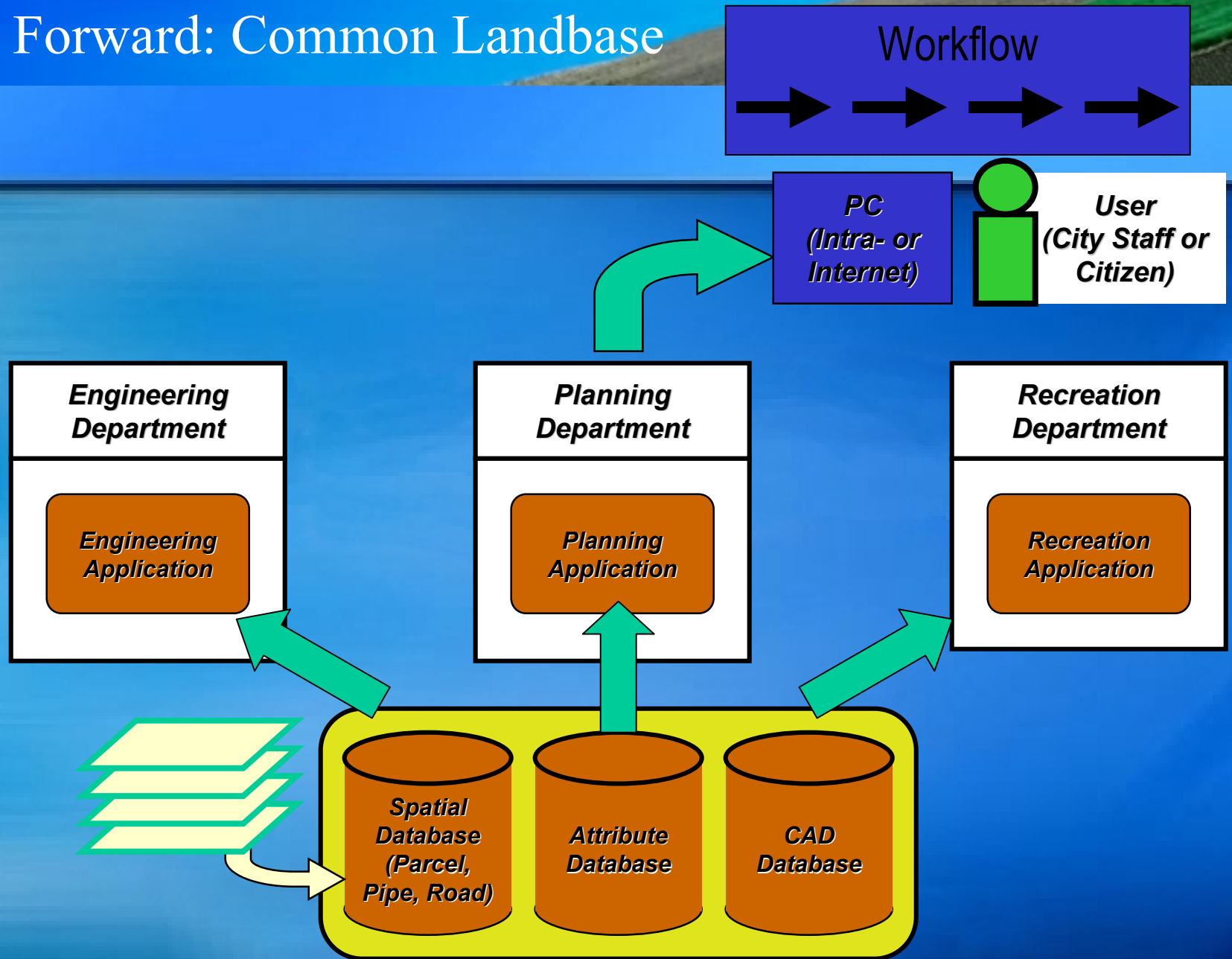
Example: Applications vs Data CRUD Matrix

Electric Utility		Automated Mapping	Facility Design & Posting	Ad-Hoc Query	Standard Reports	Facility Maintenance	Emergency Response		Plant Accounting	WMS	CIS
Customer			R	R	R		R				C
Landbase											
Land Parcel	C		R	R			R				
Road	C		R	R			R				
Distribution System											
Conductor		C	R	R			R		R	R	
Conduit		C	R	R			R		R	R	
Pole		C	R	R			R		R	R	
Substation		C	R	R	U		R		R	R	
Transformer		C	R	R	U		R		R	R	
Vault		C	R	R			R		R	R	
Outage							U				C
Work											
Construction		R							C		
Maintenance		R							C		

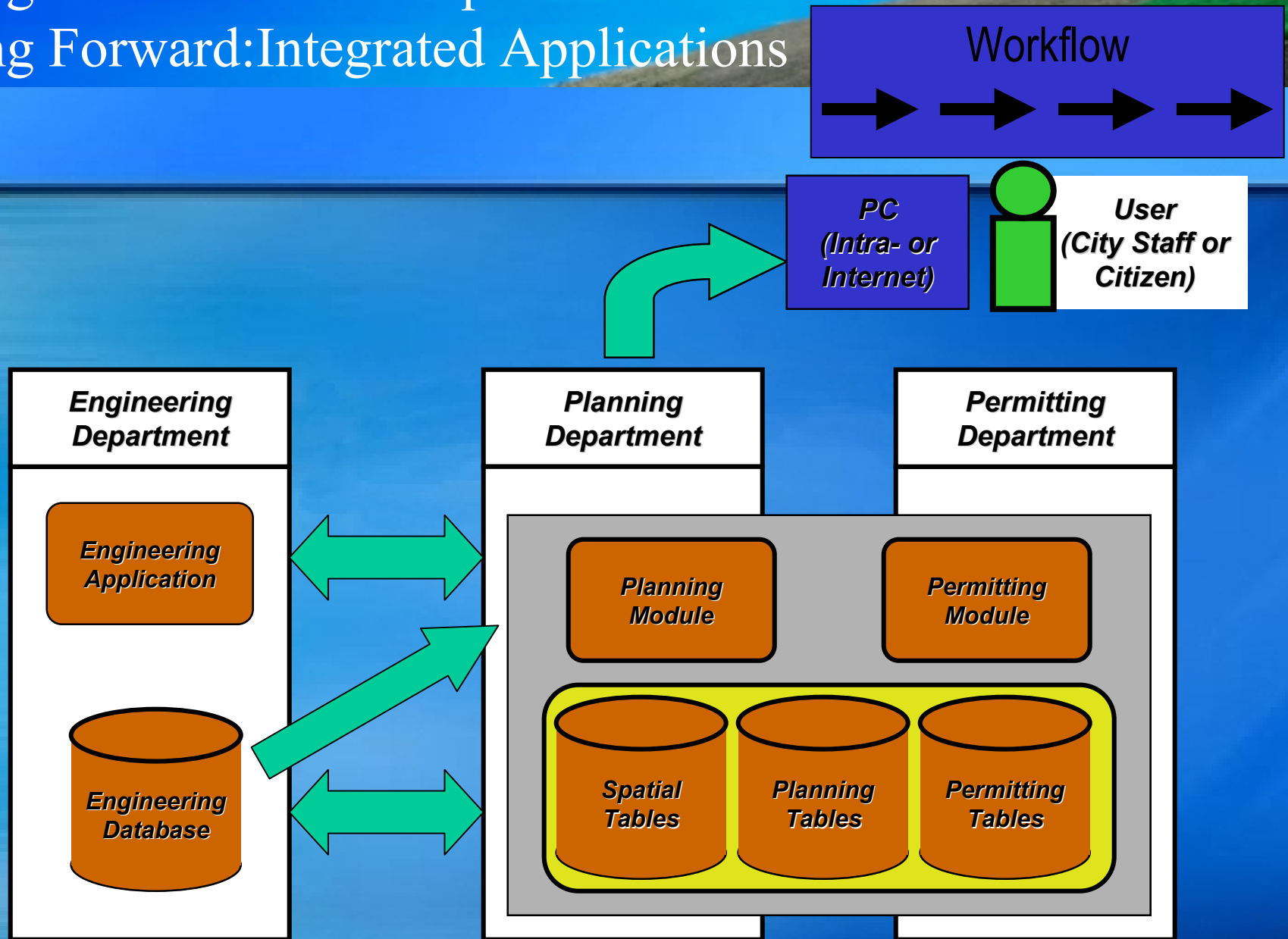
Moving GIS into the Enterprise: Current Situation: Silos & Interfaces



Moving GIS into the Enterprise: Moving Forward: Common Landbase



Moving GIS into the Enterprise: Moving Forward: Integrated Applications



Moving GIS into the Enterprise: How Do I Get There?

- In-house Architect
- Decide on type(s) of integration
 - Department
 - Workflow
 - Systems
- Lists, Tables & Diagrams
- Decisions:
 - Buy vs build
 - Re-use existing models (whose? yours or theirs?)
- Iterate, iterate, iterate

