

The implementation of GIS at Greater Vernon Water

URISA BC
Conference,
Richmond, BC
February 18, 2004



GREATER VERNON
WATER



GREATER VERNON
W A T E R

The implementation of GIS at Greater Vernon Water (GVW)

■ Speakers:

□ Leon Gous

Project Director, GVW (now General Manager Community Services at the City of Vernon)

□ Tjaart Van den Berg

GIS Consultant, LandInfo Technologies Inc.



GREATER VERNON
WATER

The Greater Vernon Area

- North Okanagan
 - Vernon
 - Coldstream
 - NORD
- 45,000 people
- Tourism
- Retirement
- Agricultural





GREATER VERNON
W A T E R

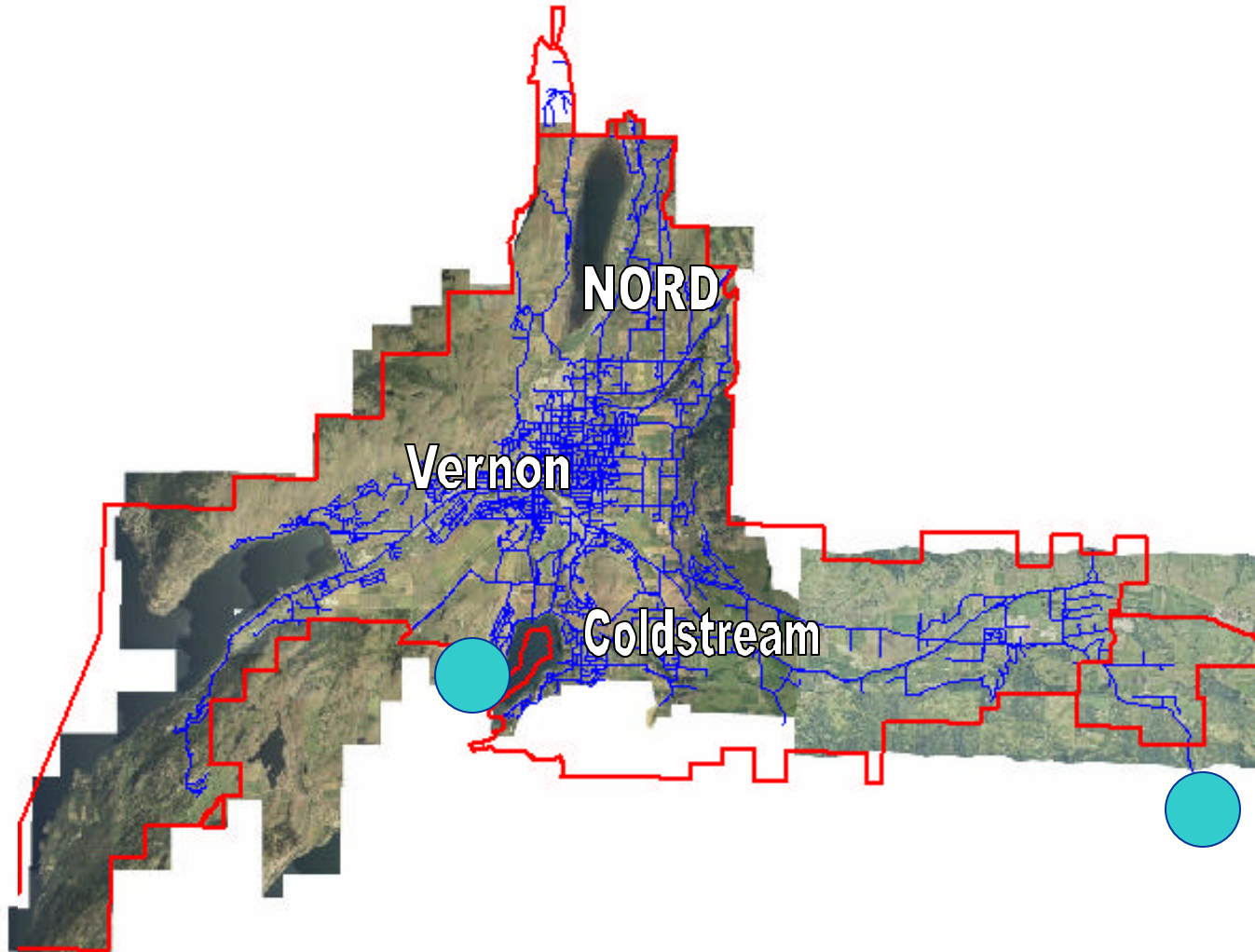
About GVW

- GVW was established early 2003
- Combined networks of three water utilities
 - North Okanagan Water Authority (NOWA)
 - City of Vernon
 - District of Coldstream
- GVW Mission:
 - ... economical supply and distribution of a sufficient quantity and quality of water in the interests of both agricultural and non-agricultural users in the Greater Vernon Community



GREATER VERNON
WATER

GVW Network





GIS Strategy

- GIS to be an integrated part of GVW from the start.
- Providing decision support for:
 - Strategic planning (long term)
 - Day to day operations
- Make data accessible to local authorities and public
- GIS to be:
 - a cost effective
 - operational as soon as possible



Steps

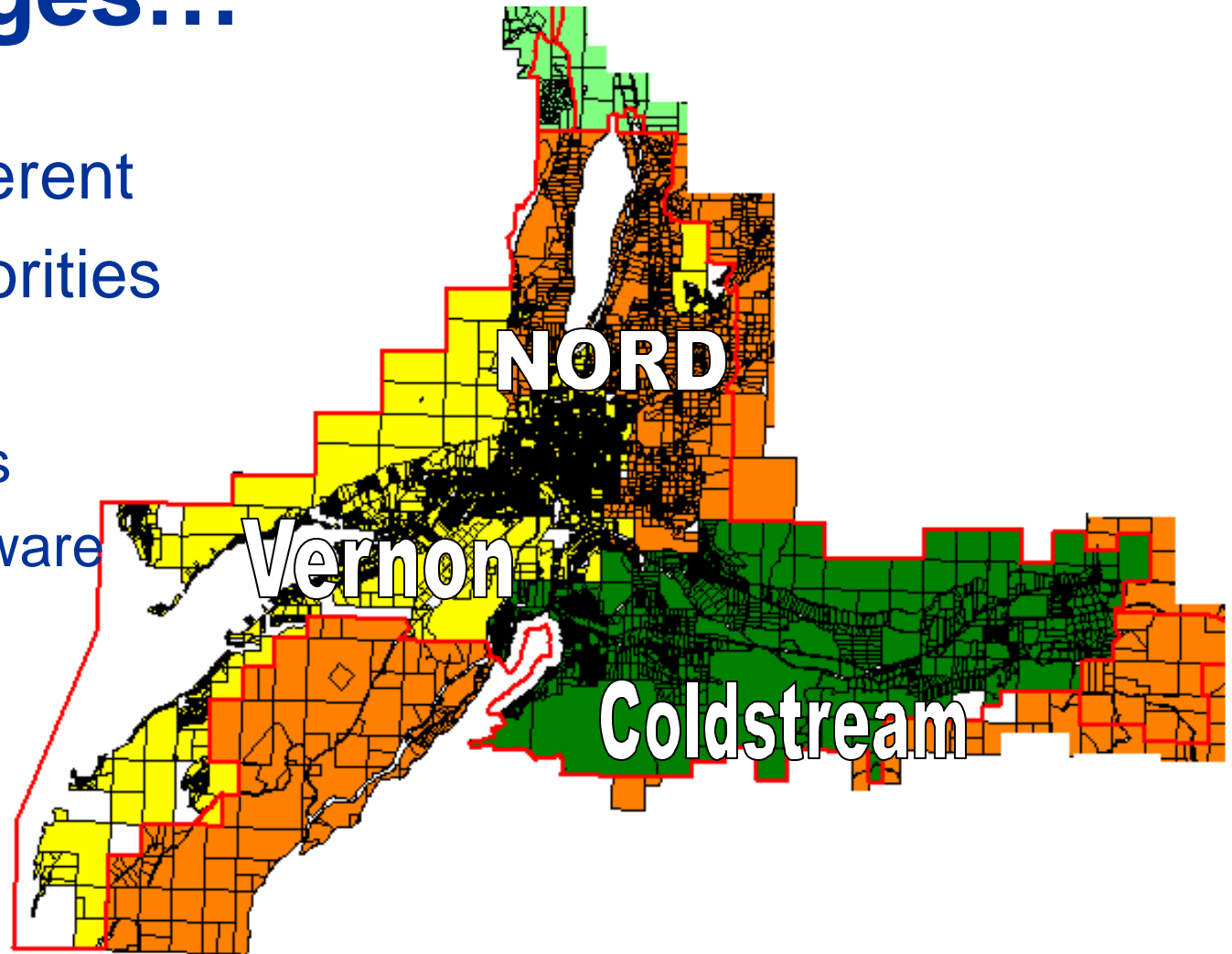
- Status quo report
- Workshops with role players
- Identified data needs
- Determined high priority needs
- Implementation ASAP



Challenges...

- Three different local authorities with own:

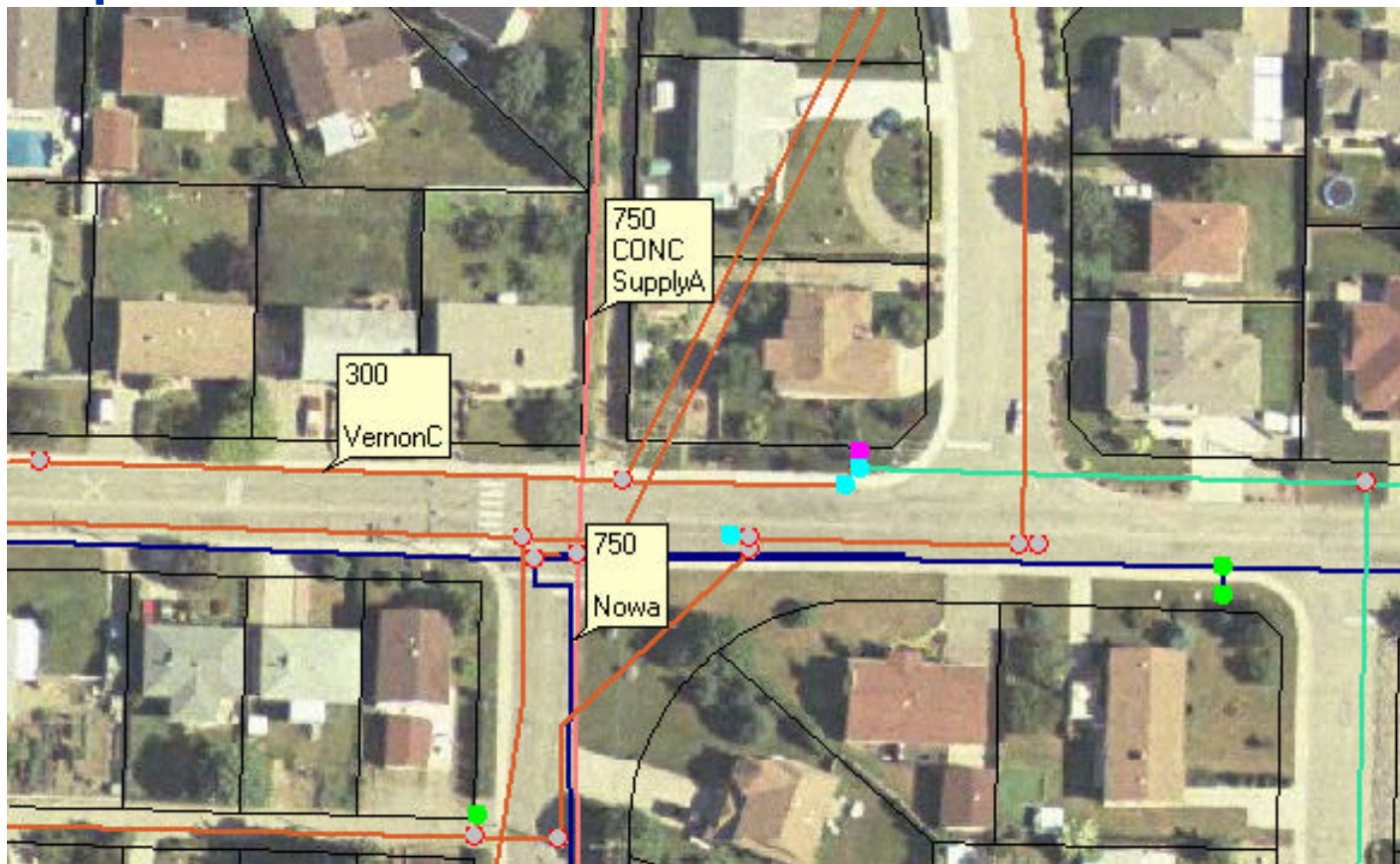
- Data sets
- GIS software
- Financial Systems





Challenges..

- Separate water networks





Challenges...

- Combined Domestic and Irrigation Network





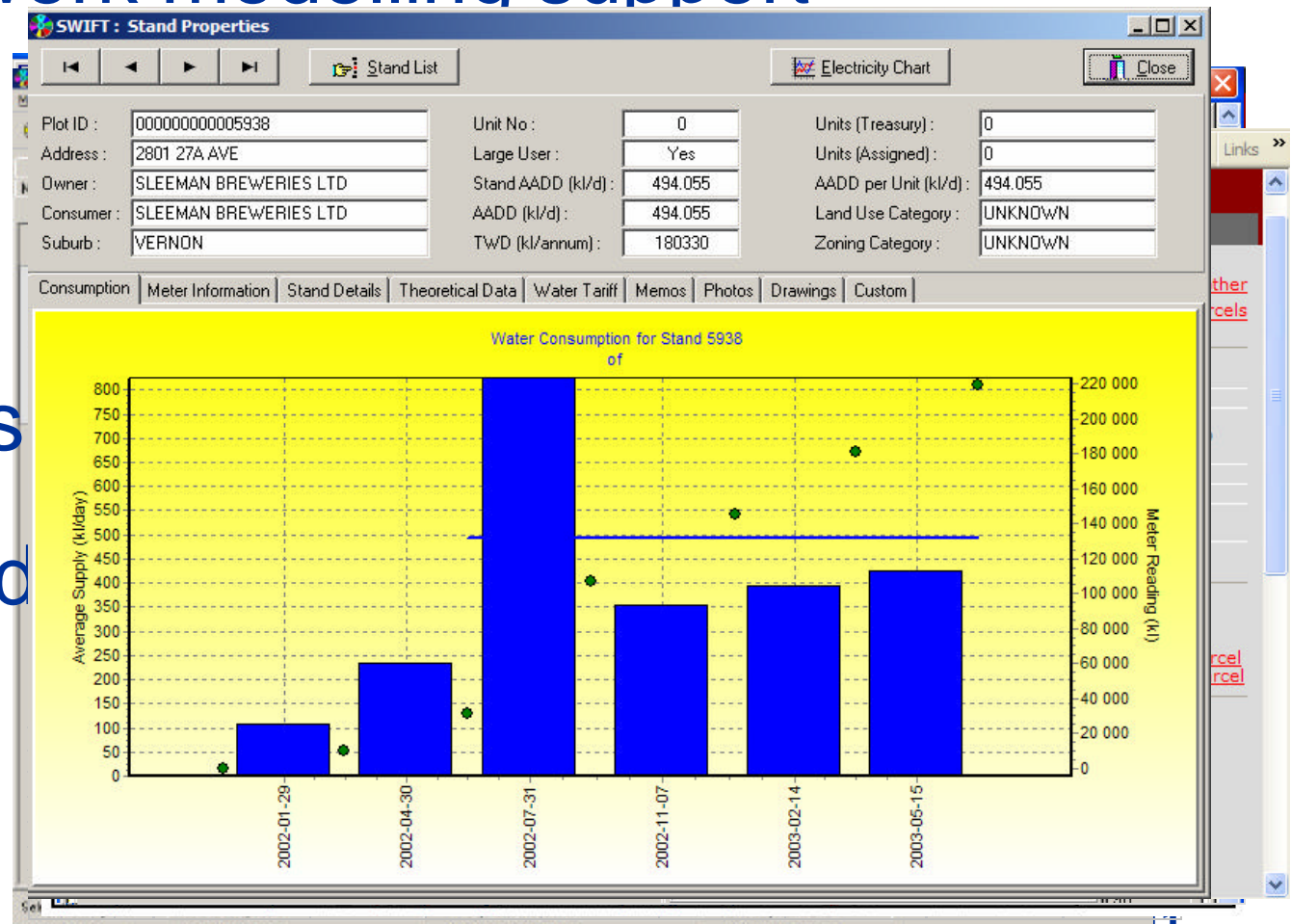
Priorities

■ Water network modelling support

- Demand
- Hydraulic
- Financial

■ Map Books

■ Web based viewer





GREATER VERNON
W A T E R

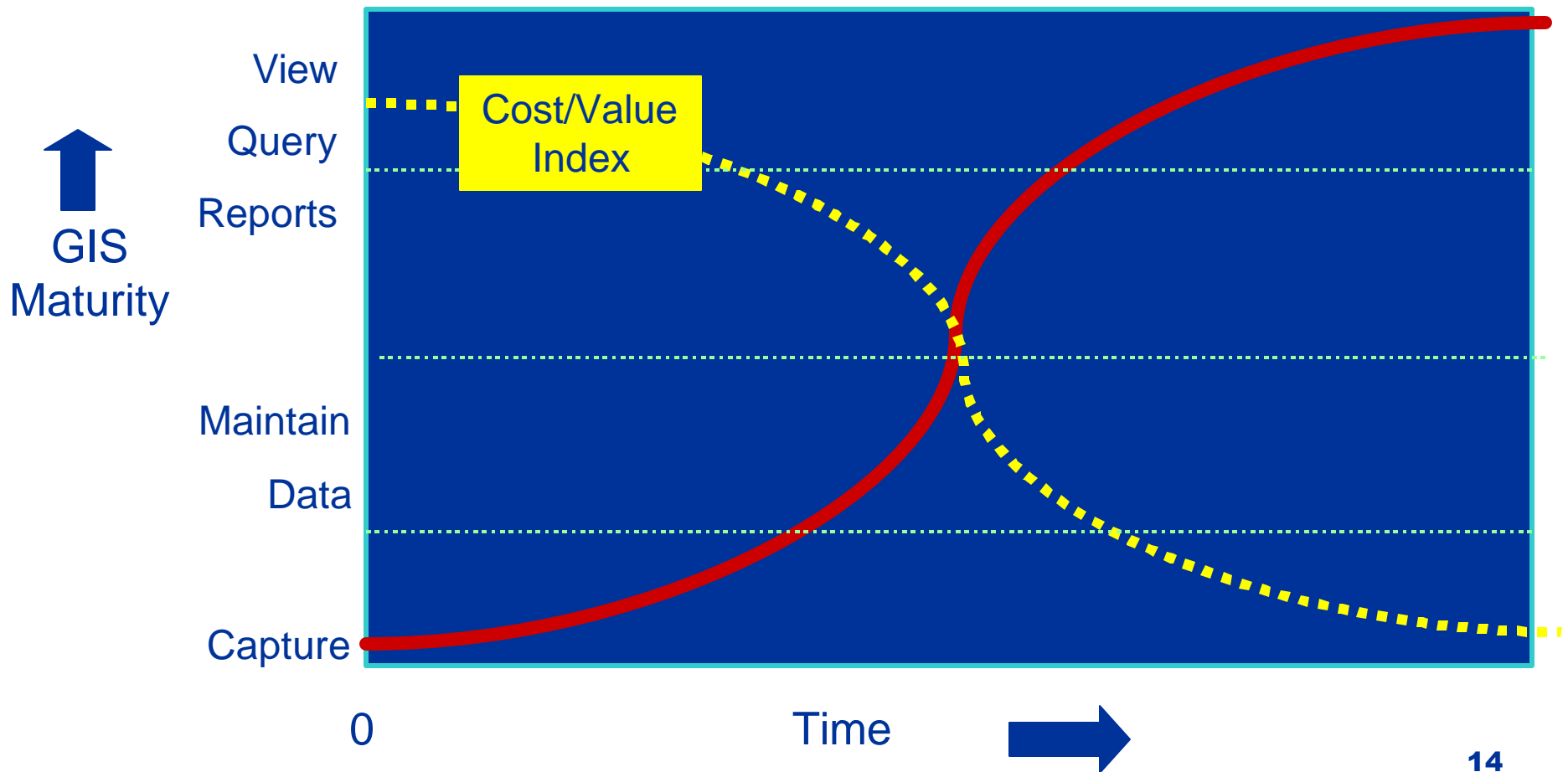


GIS goals

- Cost effective: Return on Investment
- Data warehouse concept
 - Use existing available data sets
 - GVW responsible for water network only
- Minimize duplication of data

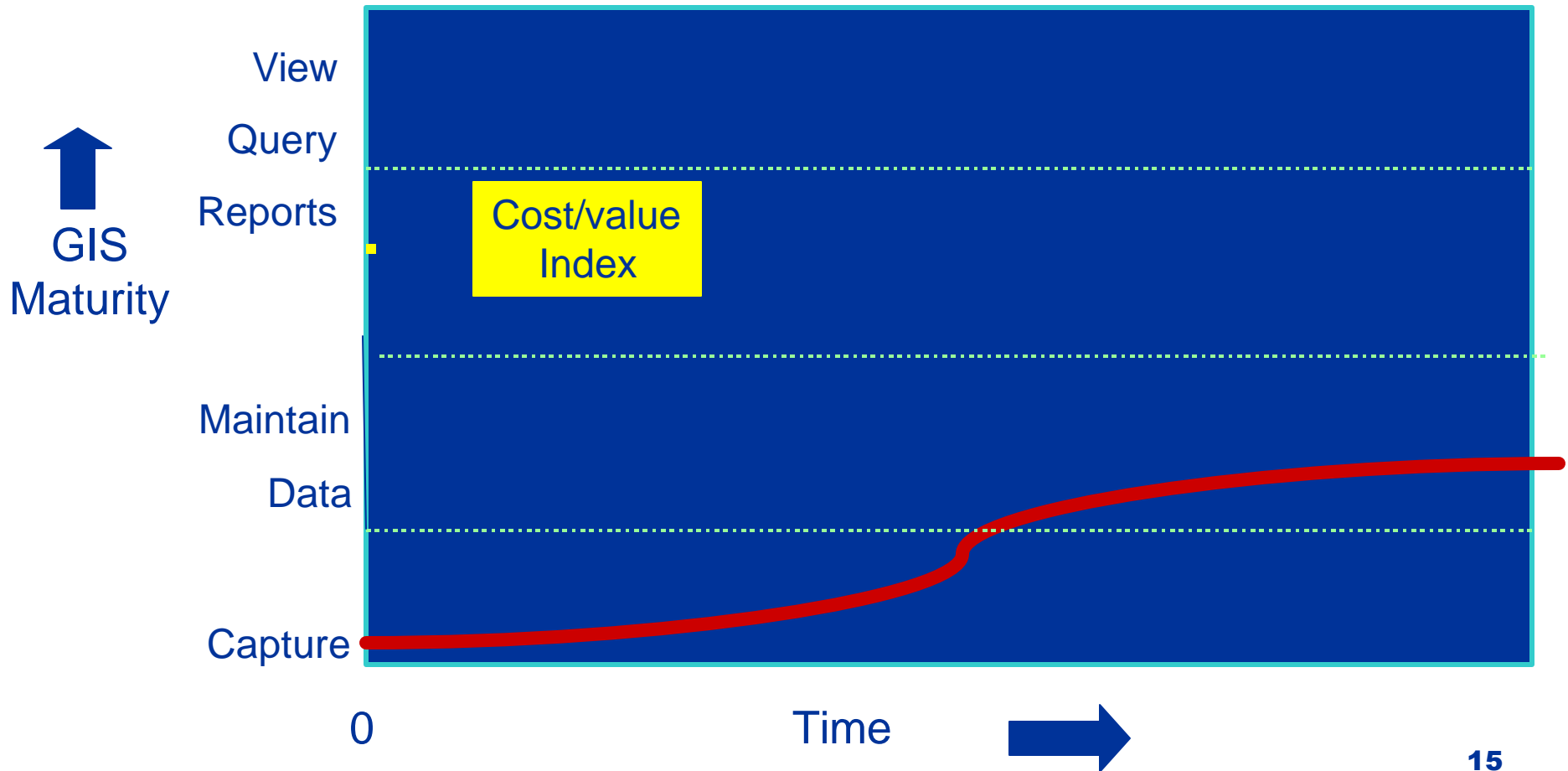


Cost effective GIS



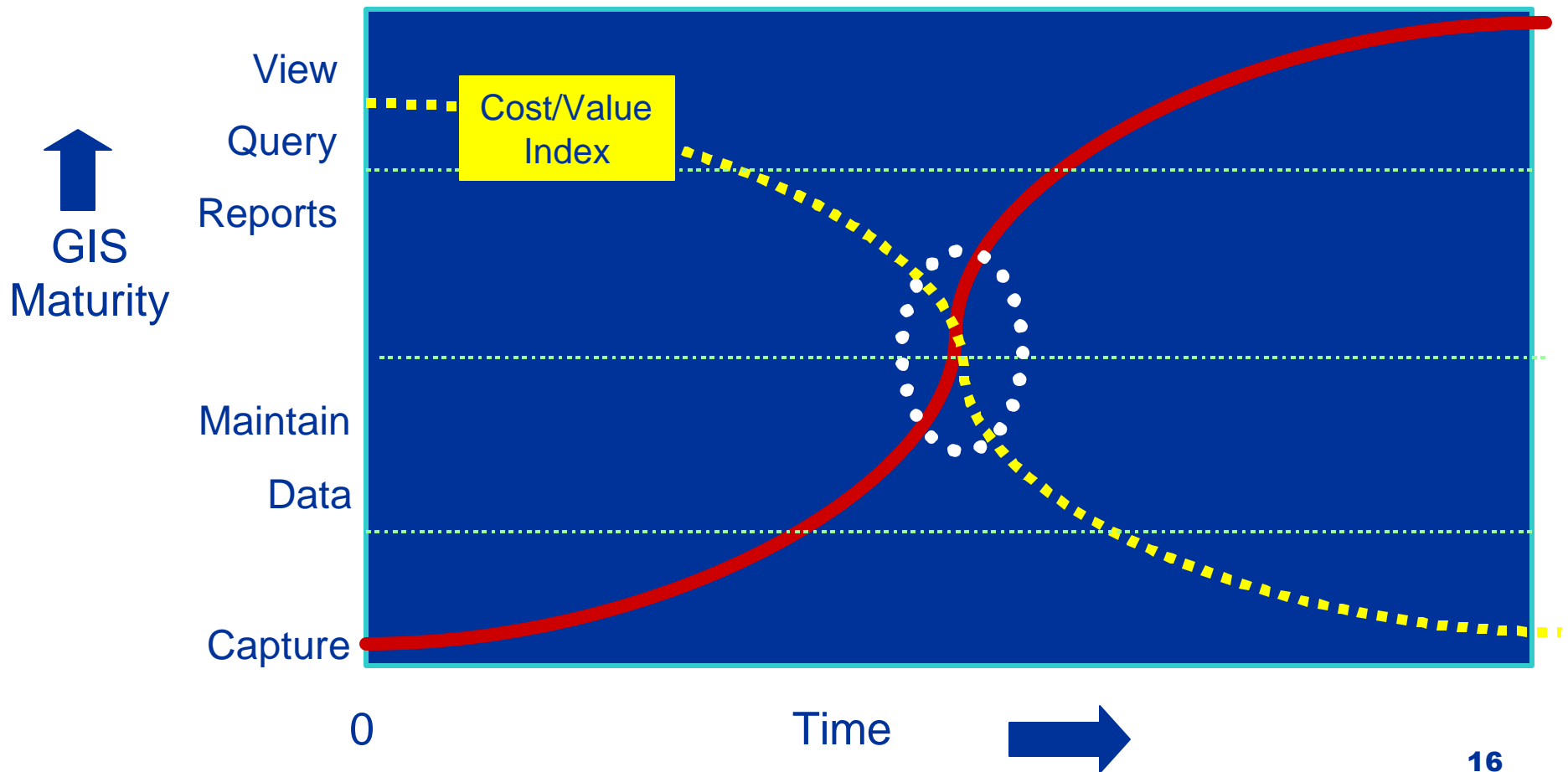


Cost effective GIS





Cost effective GIS

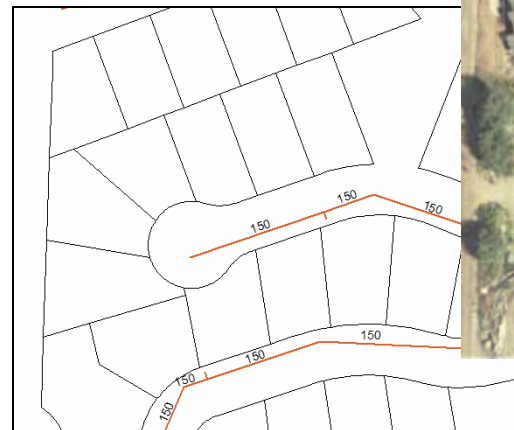




GIS Data Warehouse

Water Network Data Set

- ❑ Water network
- ❑ Water meter readings





GIS Data Warehouse

Water Network Data Set

Shared Data Sets

- Ortho-photos
- Contours/DEM
- Parcel base map





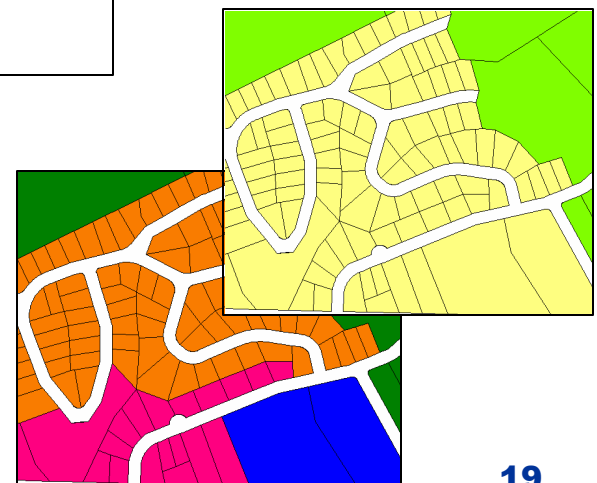
GIS Data Warehouse

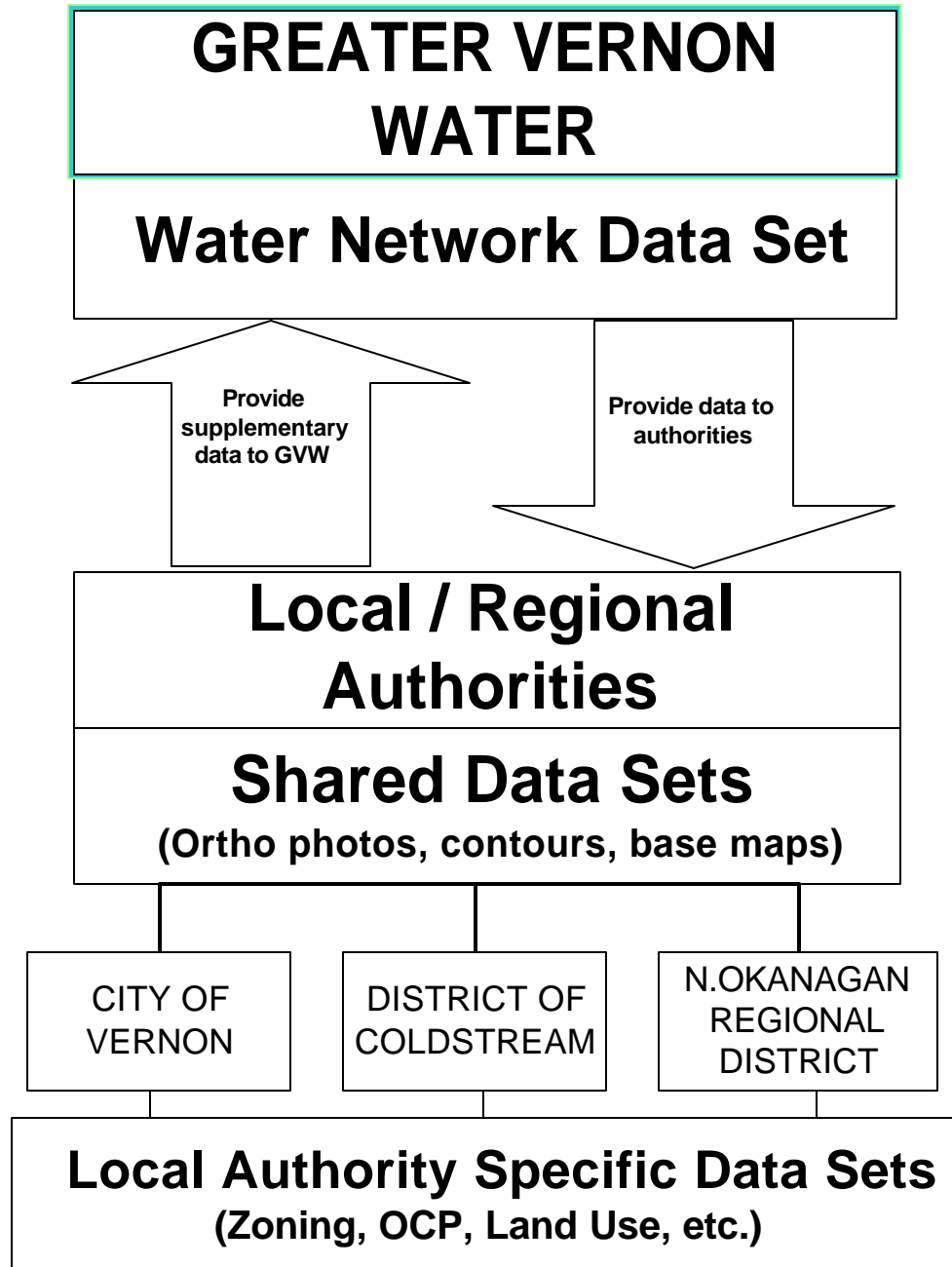
Water Network Data Set

Shared Data Sets

**Local Authority Specific
Data Sets**

- Land use
- Zoning
- OCP





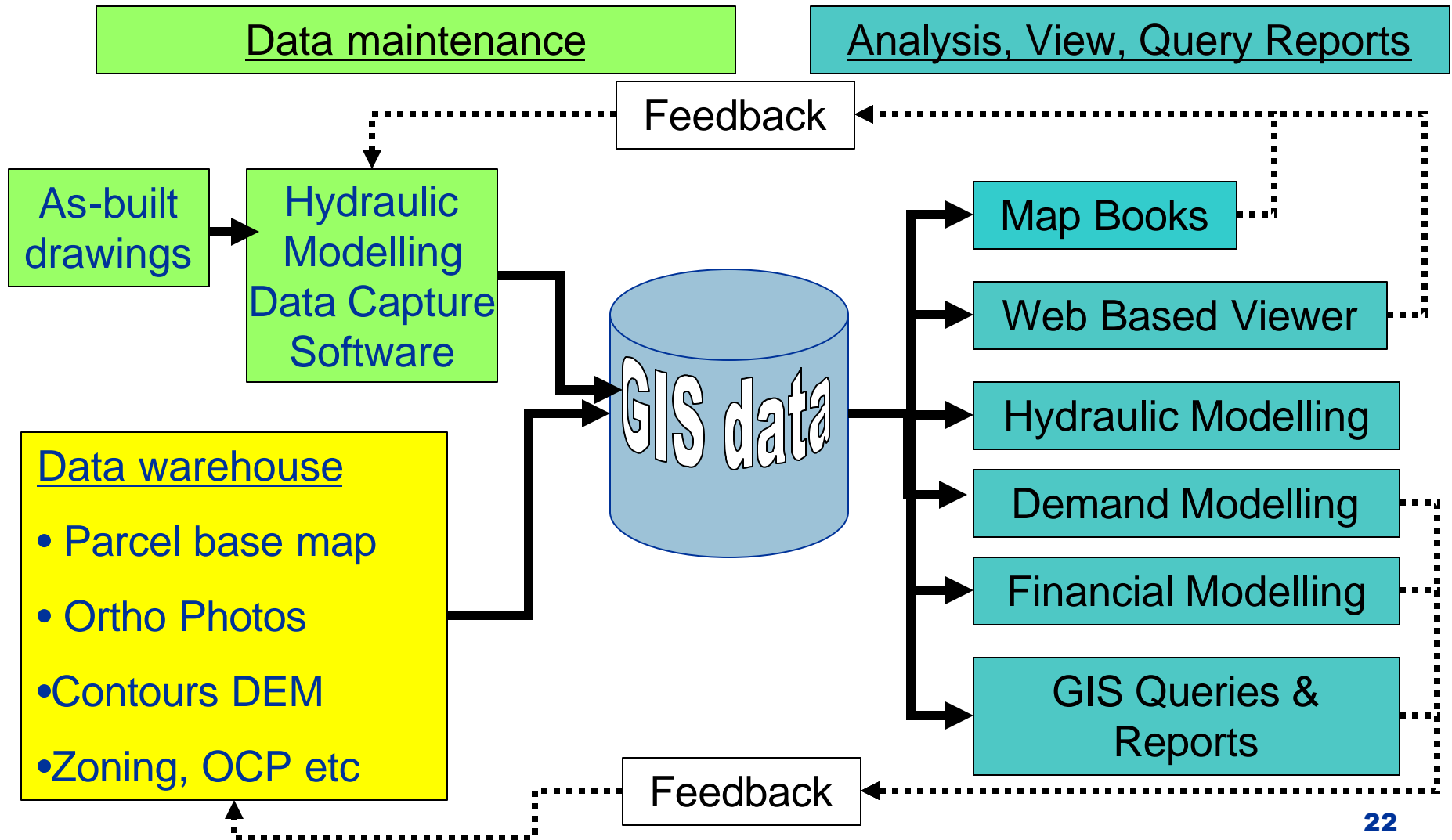


Minimize Duplication of Data

- Previously different data sets for:
 - Modelling applications
 - GIS
 - Mapbooks etc..
- Combined to **one** network data set for all applications



GIS data flow





Lessons learned

- Management support
- Focus on high priority projects
- Result orientated
- Be sensitive to needs of organization
- Encourage the use of GIS to support projects.



GREATER VERNON
W A T E R