

Data of the Commons?



*Web Based Solutions to Infrastructure
and Asset Management*



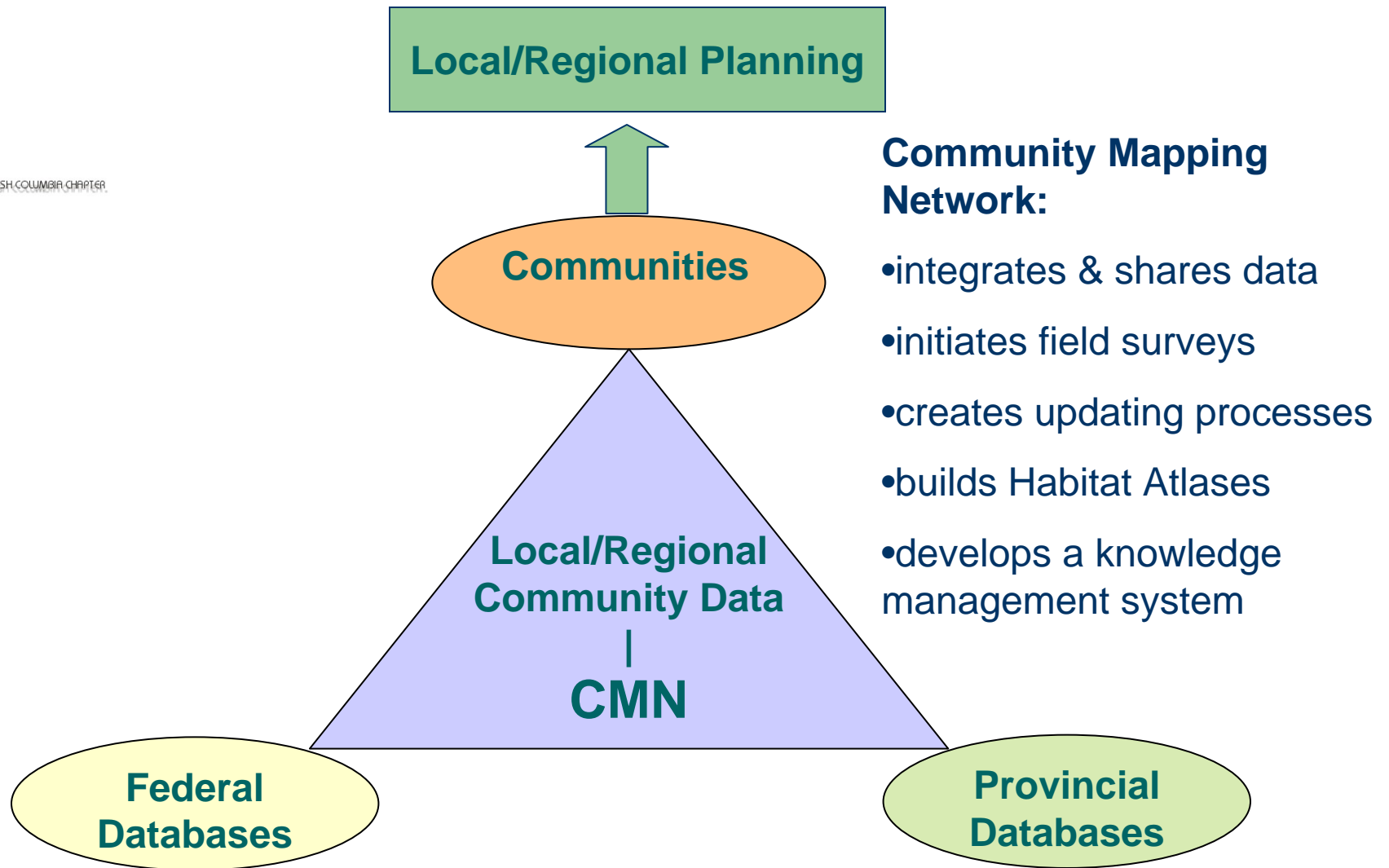
Rob Knight

Community Mapping Network (CMN)

MWLAP - Environmental Stewardship

May 26, 2004

CMN Business Model



Community Mapping Network:

- integrates & shares data
- initiates field surveys
- creates updating processes
- builds Habitat Atlases
- develops a knowledge management system

CMN is a network of partnerships, linked servers & hosted data that connects communities



- City of Nanaimo cadastre
- City of Vancouver cadastre
- Regional Districts: Central Okanagan, Fraser Valley, Sunshine Coast, Squamish/Lillooet, Comox/Strathcona, Fraser/Fort George
- FrogWatch, Wildlife Trees, BC Grasslands, BC Wetlands, Invasive Species, Fraser Basin Council, Mosquito Control
- Fisheries Information Summary System
- Ministry of Energy and Mines Trim maps
- Offshore oil and gas

A Network of Partnerships

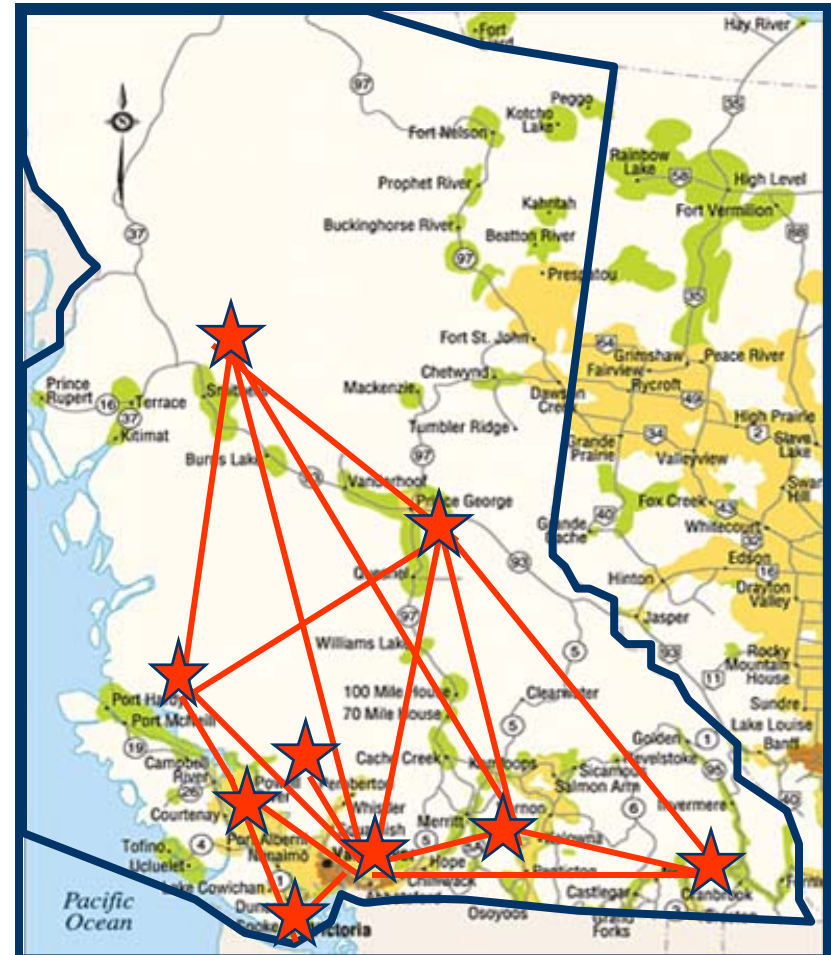
URISA



Building the Community Mapping Network

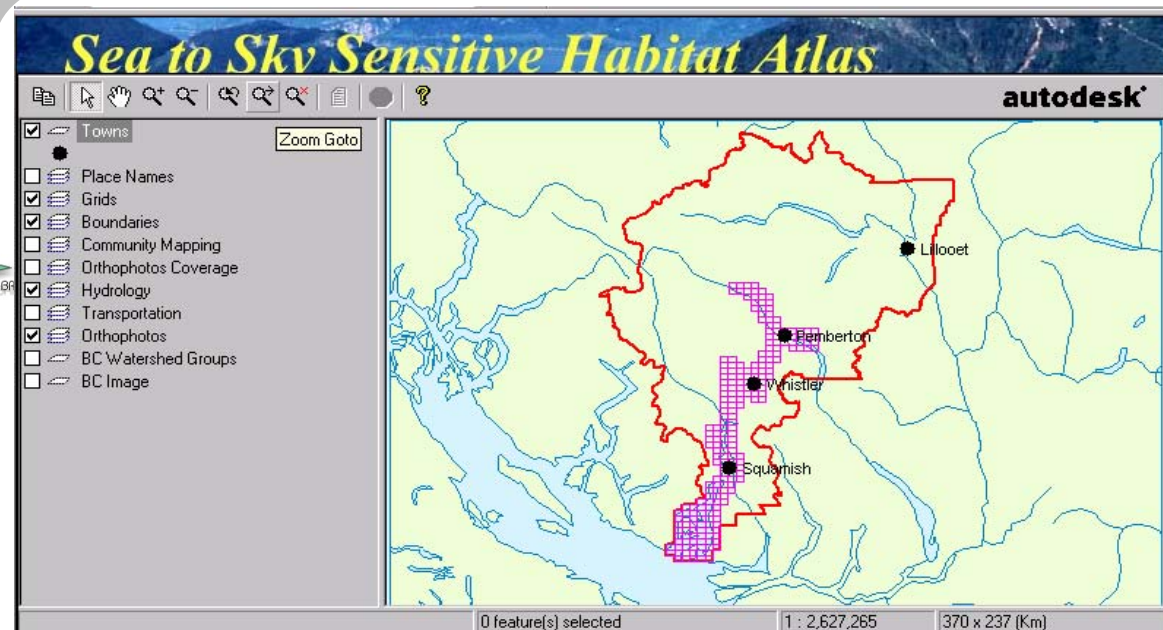
- Share information and resources
- Integrate Habitat Information
- Provide quality assurance and quality control
- Develop methods/standards
- Build customized applications
- Promote inventory and mapping

Plan Sustainable
Communities In BC

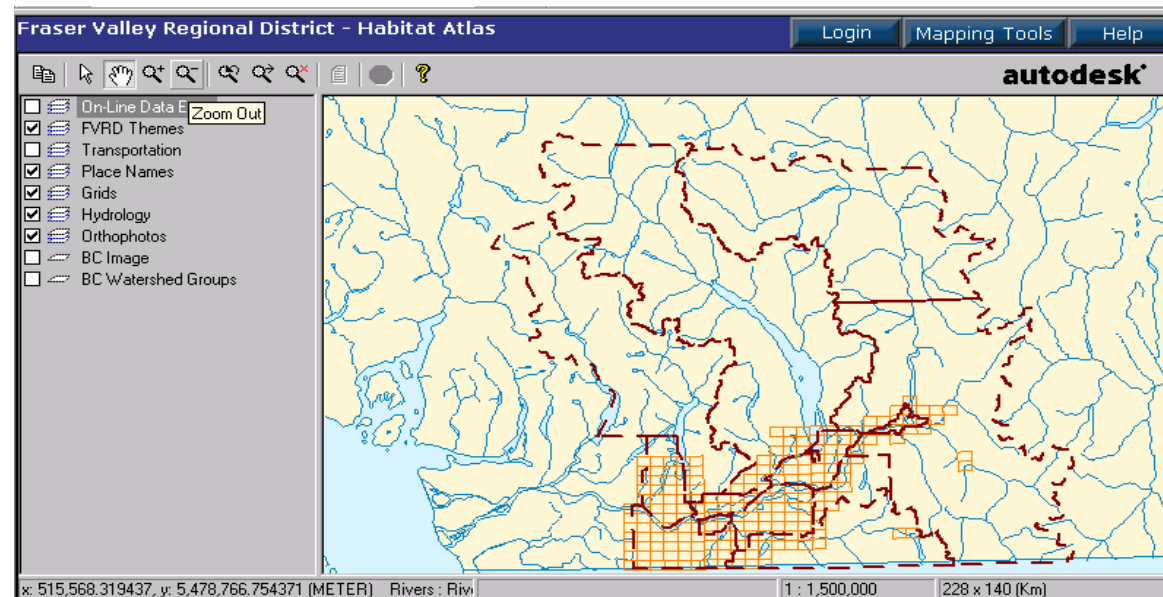


Sensitive Habitat Atlas Projects

Sea to Sky
Squamish – Lillooet
Regional District,
May 2004



Fraser Valley
Regional District,
Spring, 2002

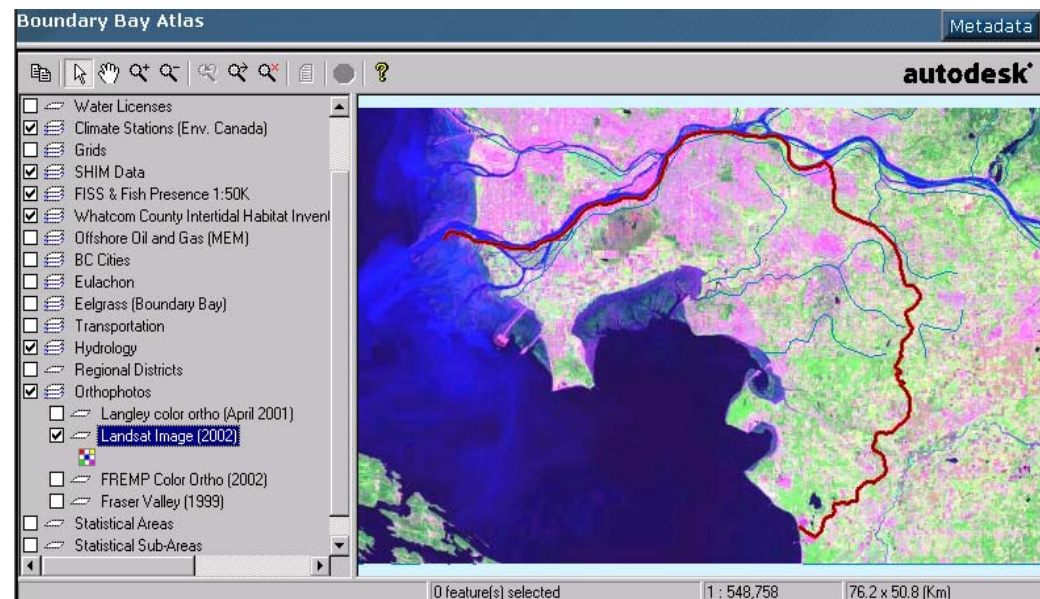


Sensitive Habitat Atlas Projects

Sunshine Coast Regional District,
Spring, 2003 and
Updated April, 2004

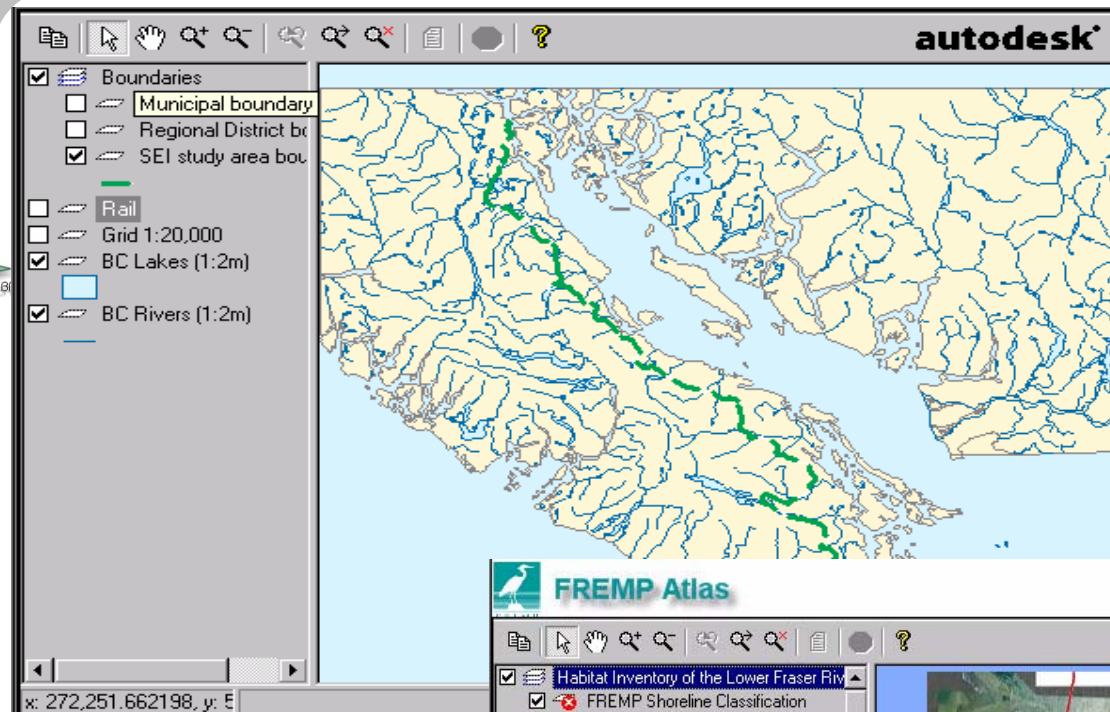


Boundary Bay Area Atlas,
Initiated Fall, 2002



URISA BC

Sensitive Ecosystem Inventory (SEI)



Sensitive Ecosystems Inventory

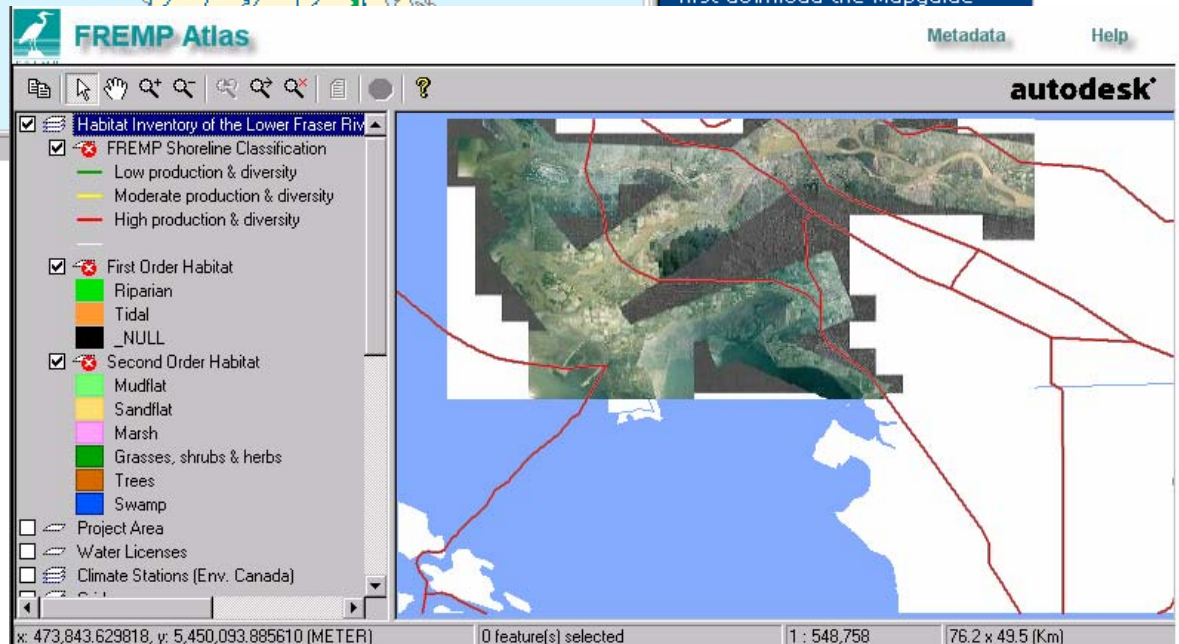
- [Code description](#)
- [SEI information](#)

This MapGuide application is currently under construction.

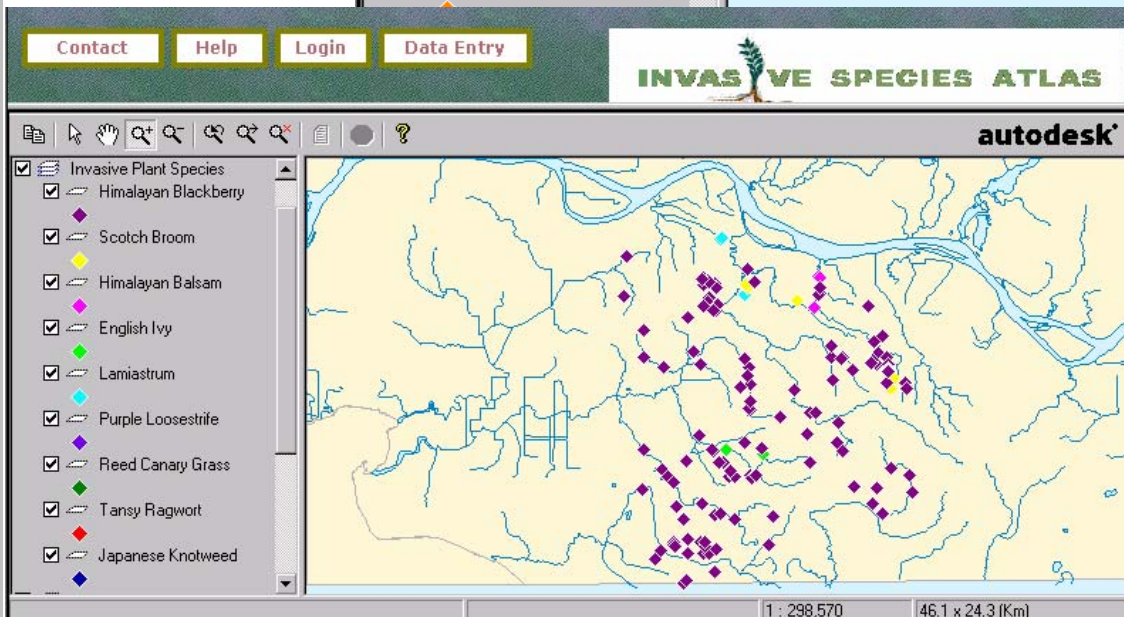
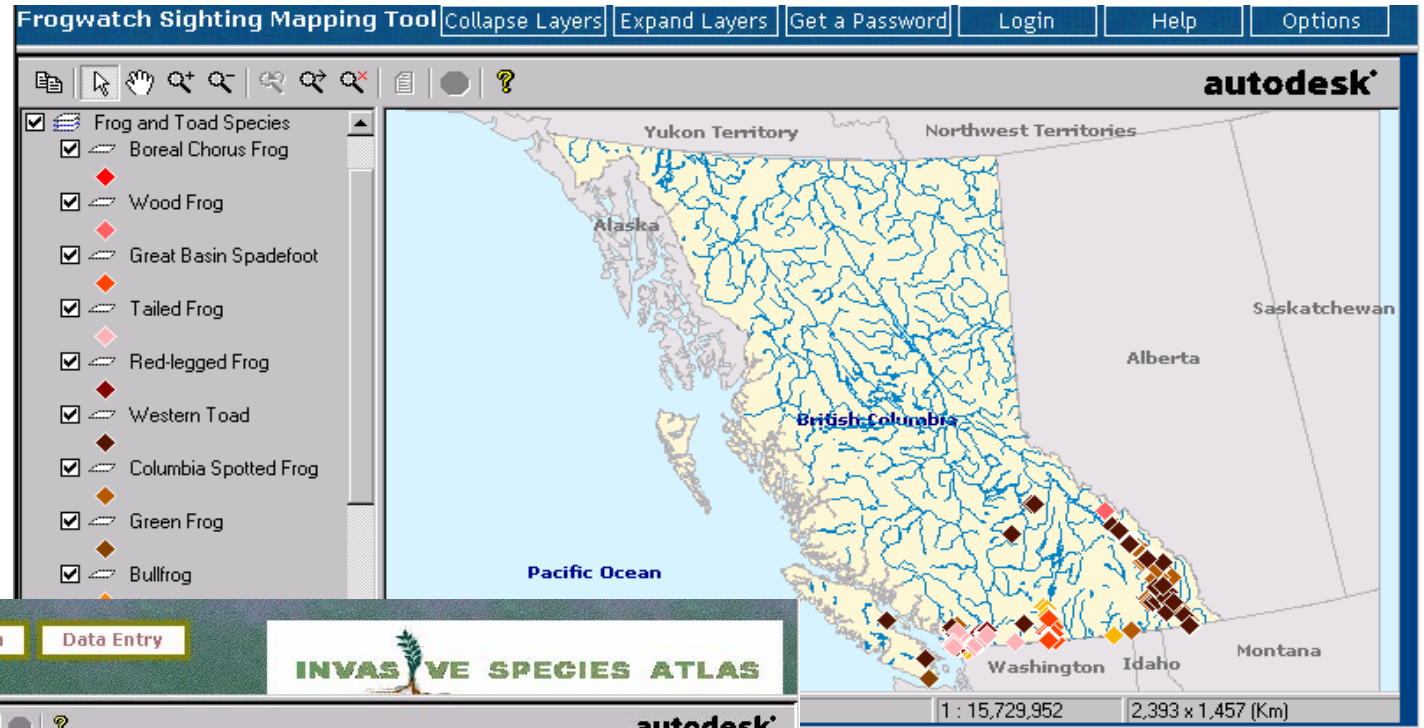
To see more detail use the "zoom tool". More map layers or "themes" will be available as you zoom in. If you are not familiar with MapGuide Viewer, there is a comprehensive HELP library available, just click the right mouse button to go there at any time.

To view the maps, you must first download the Mapguide

FREMP, Fraser River Estuary Management Program

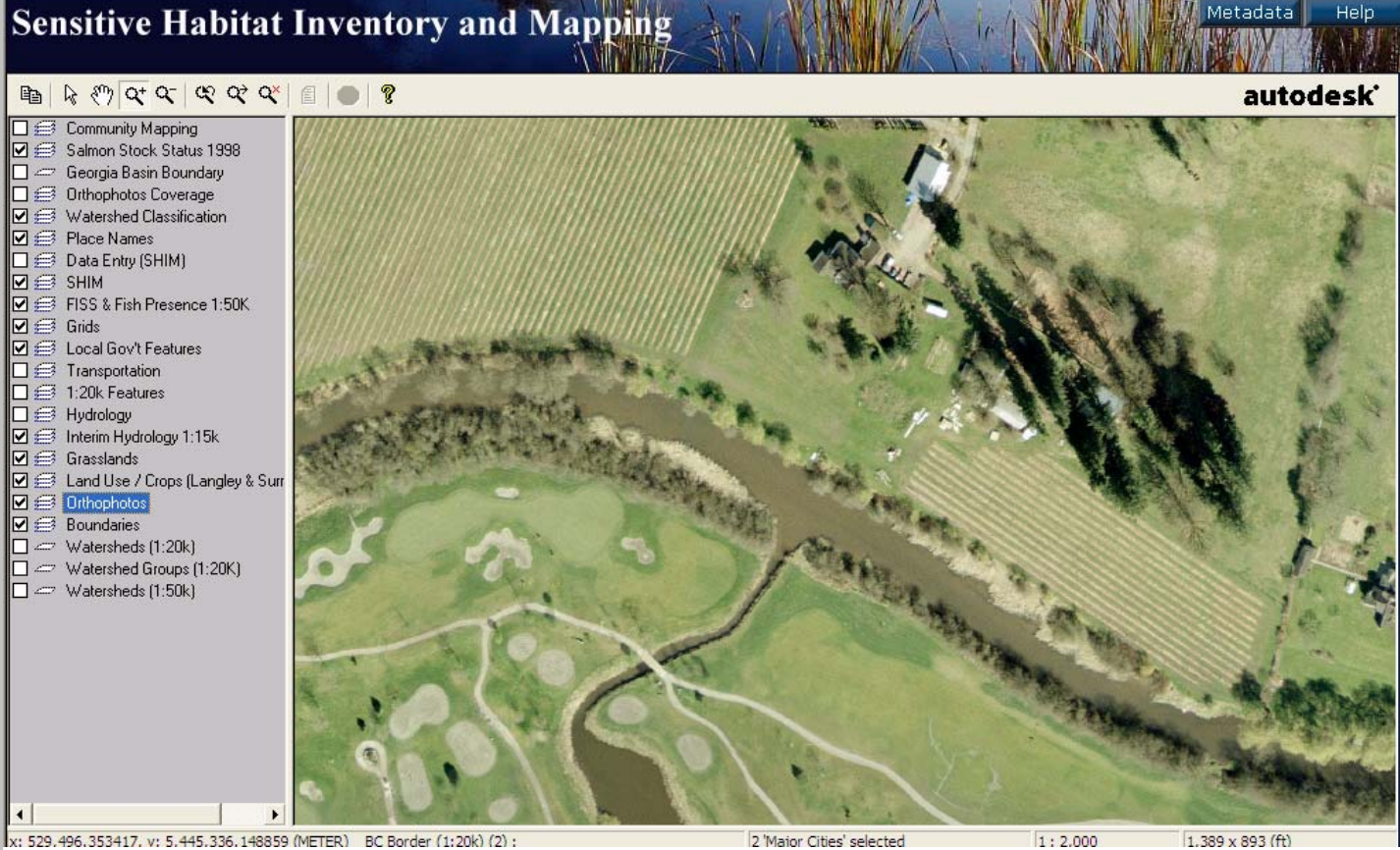
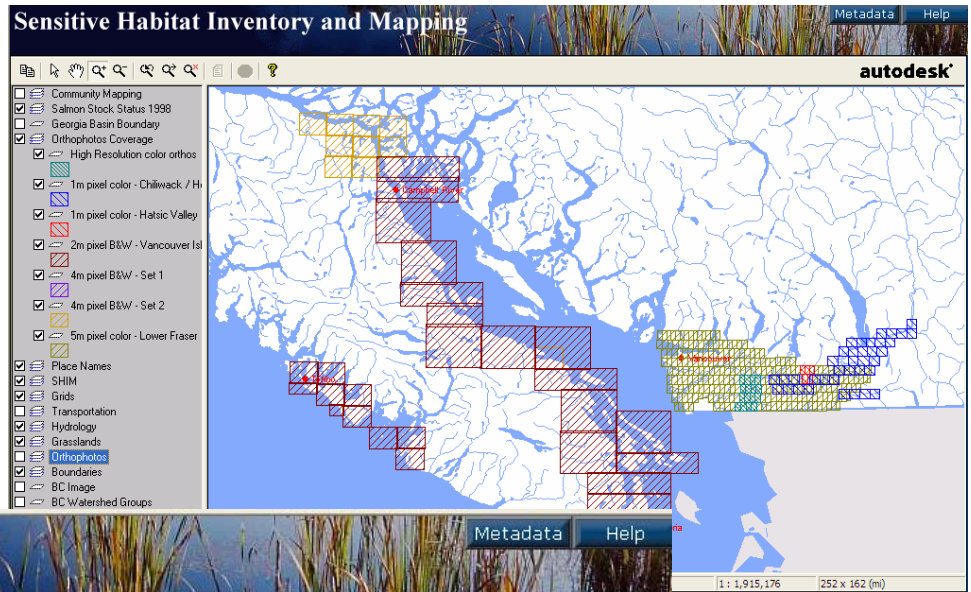


BC Frogwatch Program



Invasive Species Atlas

Georgia Basin Ortho Imagery, 1995 - 2004



x: 529.496,353417. v: 5.445,336,148859 (METER) BC Border (1:20k) (2) :

2 'Major Cities' selected

1 : 2,000

1,389 x 893 (ft)

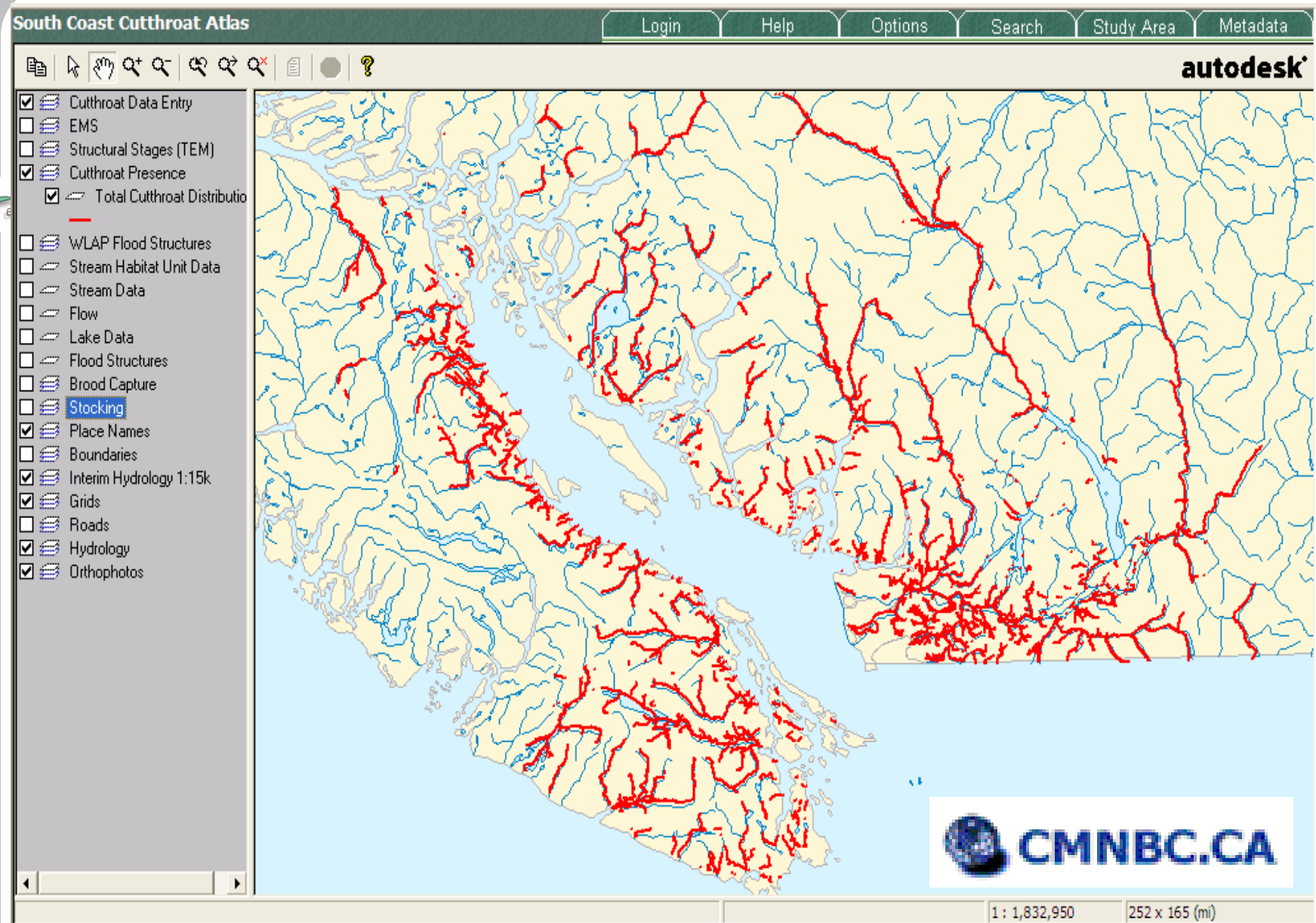
Why “Data of the Commons”!

To minimize or avoid the many Tragedies of the Commons we are facing:



- Sharing data to make the best use of limited public funds.
- Projects as partners or cooperatives are affordable, make economic development sense and the data are more secure.
- If these data are not used to plan and make decisions, they have no real value.
- Sharing “value added data” supports these partnerships and our understanding of the Commons.
- Data about the Commons is really part of the Commons.
- Not sharing these data will be another Tragedy of the Commons.

Cutthroat/Steelhead/Coho Meets Cascadia!



Bambi Meets Godzilla, Marv Newland, 1969

URISA
BRITISH COLUMBIA CHAPTER

