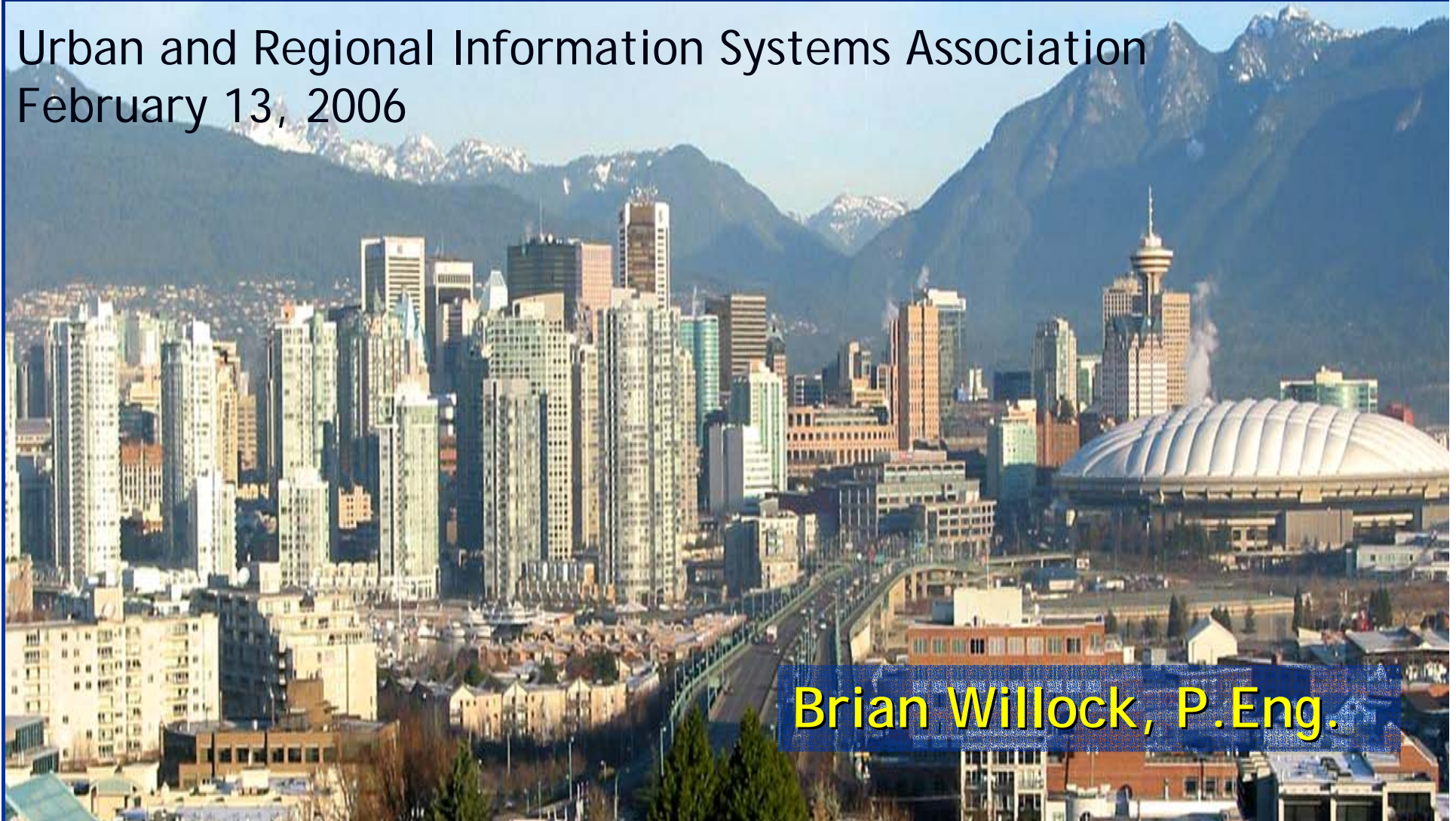


City of Vancouver Asset Management - So Far, So Good?



Urban and Regional Information Systems Association
February 13, 2006



Brian Willock, P.Eng.

Agenda

Assets? What Assets?

Old School Asset Management

New School Asset Management

Infrastructure Management Strategy



Assets?
What Assets?



Public Works
Infrastructure

Public Works Infrastructure

Assets?
What Assets?

Sewers - 2000 KM

Waterworks- 1500 KM

Streets - 1400 KM

Sidewalks - 2000 KM

Street Lights- 53,000

Traffic Signals - 700

Equipment - 3400 Pieces



Assets? What Assets?

Engineering Services

- ~\$70M Annual Operating Budget
- ~\$55M Annual Capital Budget
- ~1800 employees
 - ❑ 80 Professional Engineers
 - ❑ 70 Operations & Construction Superintendents
 - ❑ 700 Technical and Clerical staff
 - ❑ 950 Outside field staff in operations, maintenance, and construction

Assets? What Assets?

27 Business Units based on Type of Infrastructure & Service

- Waterworks
- Sewers and Drainage
- Streets
- Traffic Management
- Parking, including enforcement
- Solid Waste Management and Landfill Operations
- Street Lighting
- External Utilities



Old School Asset Management

Internal Resources

- Forecast
- Plan
- Design
- Construct
- Operate
- Maintain



Old School Asset Management

Lifecycle Replacement

Sewer: 100 year design life =
1% annual replacement

Water: 120 year design life =
0.9% annual replacement

Both Funded as Utilities



Streets & Transportation

Annual Condition Assessment

- Pre-1997: Budgeting
- Post-1997: Risk Mitigation
- GVTA: Major Roads Network (MRN)
- Non-MRN represent largest "Infrastructure Gap"

Old School Asset Management

Evolution of Asset Management

- Mind shift from constructors to maintainers
- Personal Computers
- Geographic Information System
- ERP Procurement - Work Management System
not replaced
- Demographics - a lot of 50-something specialists

Old School Asset Management

- Over 100 Information System applications in Engineering
- Gaps in Information
- Lack of integration



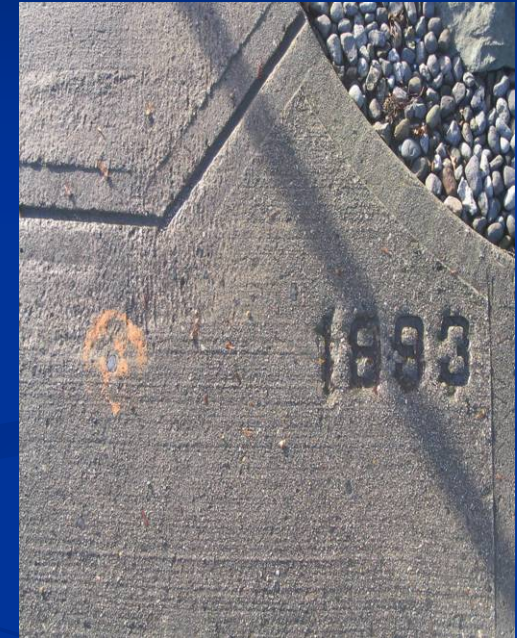
New School Asset Management

Citizen Service = Public Works Infrastructure

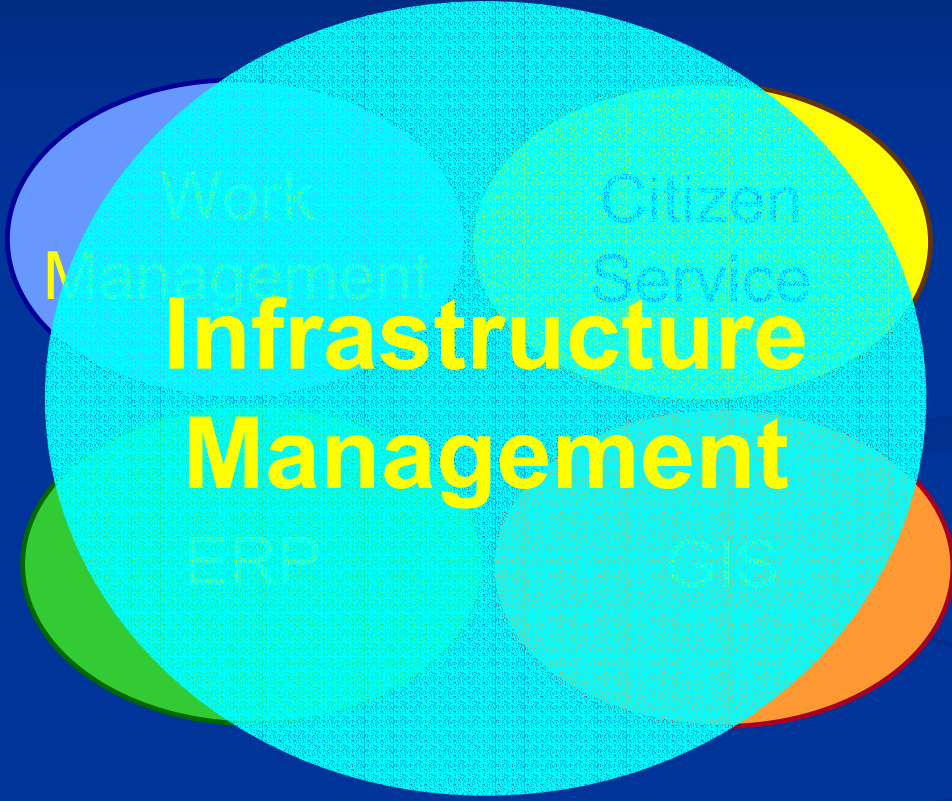
New School Asset Management

Data Collection

- Timesheets & crew reports
- Service requests & complaints



New School Asset Management



Infrastructure Management Strategy - Phases

Strategic Plan

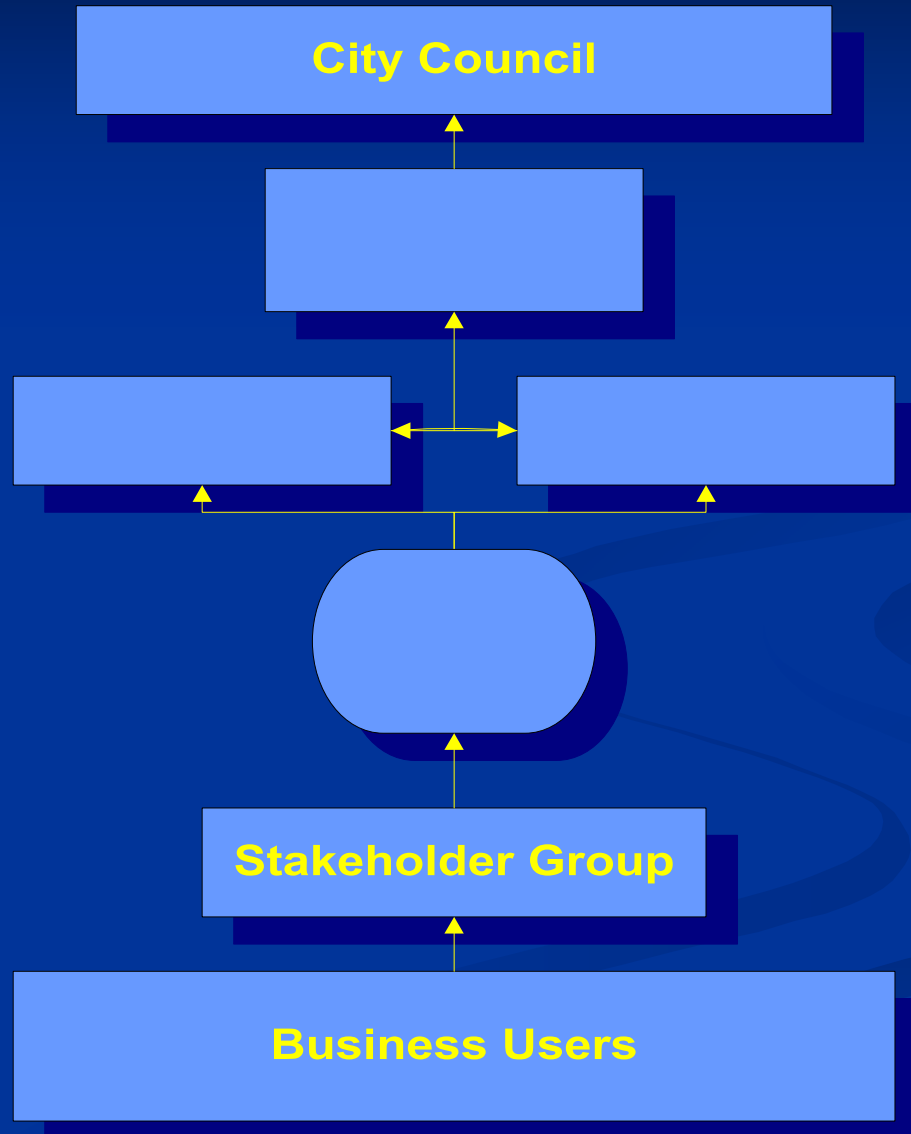
Business Requirements & RFP

Evaluation & Vendor Selection

Implementation

Infrastructure Management Strategy Theory

Project Governance



Steering Committee in the Beginning - 9 Members

- General Manager of Engineering Services (Executive Project Sponsor)
- Deputy City Engineer
- Director of Information Technology
- Director of Business Support Services
- Assistant City Engineer, Departmental Services (Project Champion)
- Assistant City Engineer, Transportation
- Assistant City Engineer, Streets
- Assistant City Engineer, Water & Sewer
- Assistant City Engineer, Solid Waste

Project Reality

Corporate Context



Project Governance More Reality

Steering Committee Now - 13 Members

- General Manager of Engineering Services (Executive Project Sponsor)
- General Manager of Corporate Services (Executive Project Sponsor)
- Deputy City Engineer (Project Sponsor)
- Director of Information Technology
- Manager of Budget Services
- Director of Financial Services
- Director of Business Support Services
- Manager of Engineering Information Services
- Assistant City Engineer, Departmental Services
- Assistant City Engineer, Transportation
- Assistant City Engineer, Streets
- Assistant City Engineer, Water & Sewer
- Assistant City Engineer, Solid Waste

Infrastructure Management Strategy Theory

Strategic Plan Initiatives

- Service Requests & Work Management
- Right of Way Management
- Information Repository
- Performance Management



Project Reality

Corporate Context

Consensus Building

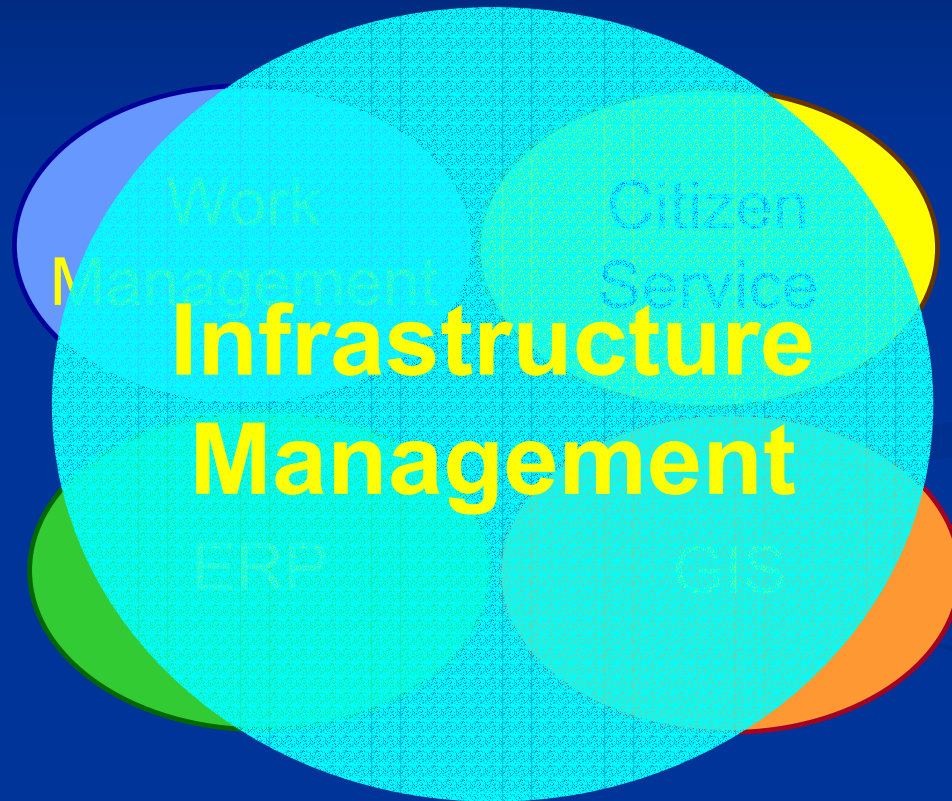


Strategic Plan Initiatives

- Service Requests (CRM/311)
- Work Management
- Right of Way Management
- Project Management
- Information Repository & Decision Support
- Budgeting
- Asset Accounting
- Performance Management



Project Theory



Project Reality

Corporate Context

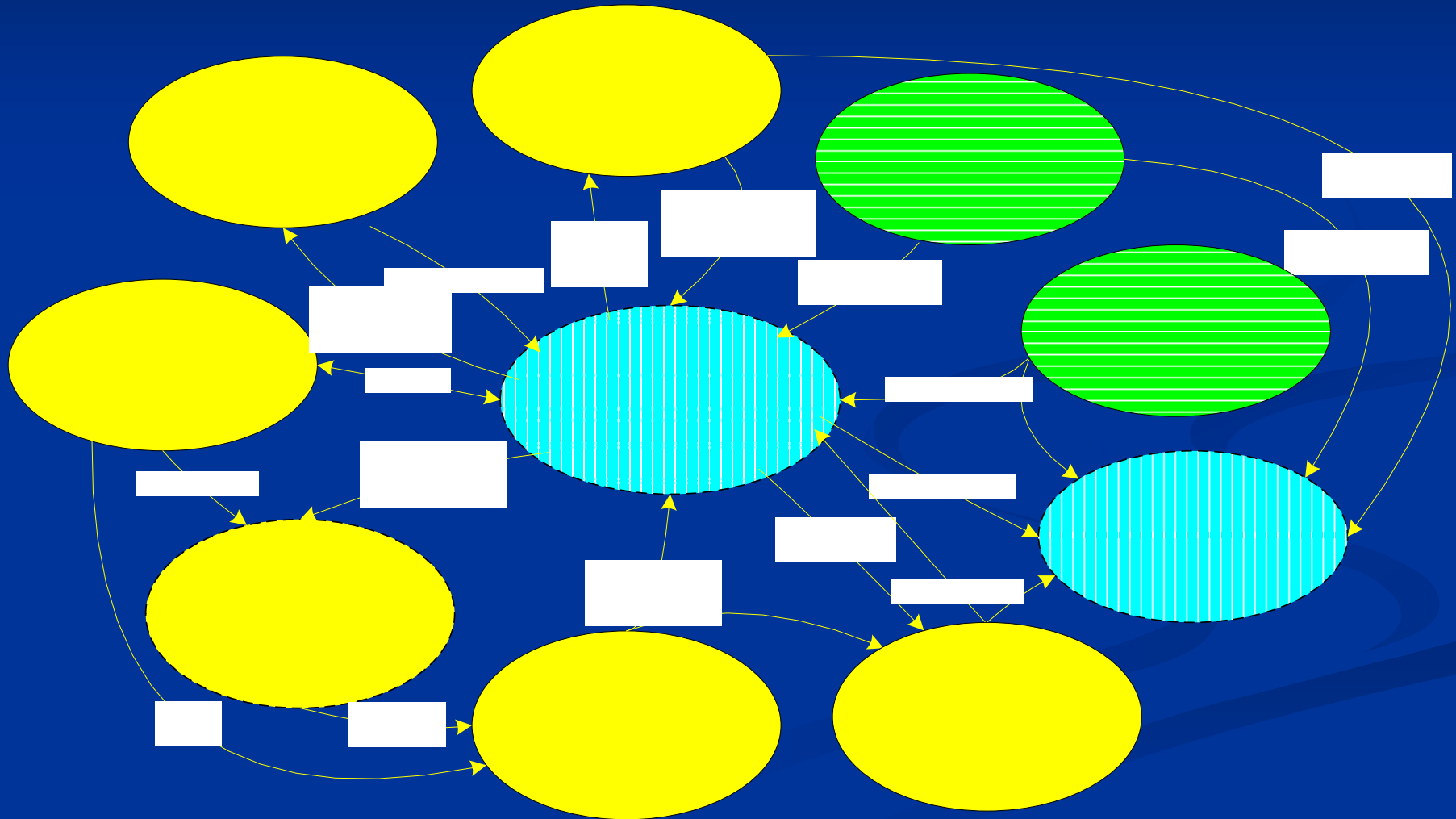
Consensus Building

Integration



Project Reality

System Relationships



Project Status

- May '05 - RFP
- October '05 - Vendor Demonstrations
- November '05 - Final Proposals
- ?



Summary

Asset Management is not new

Technology continually offers new
possibilities

Can be expensive - stay focused



Questions?