

GIS, Information Sharing, and Emergency Management: Alberta's Vision



URISA BC
GIS in Health and Public Safety
Burnaby, BC

Outline of Presentation




- Vision
- Concept/Philosophy
- Application
- Concluding Remarks

Vision

- support emergency management from the first responder to the municipal, provincial, and federal orders of government through mitigation, preparation, response and recovery
- an integrated, secure, web-based information communication technology for sharing information between agencies and jurisdictions in both private and public sectors
- enable decision makers at all levels to make better decisions faster



Outline of Presentation

- Vision
-  Concept/Philosophy
- Application
- Concluding Remarks

DIMENSIONS OF EMERGENCY MANAGEMENT

- Hazards
 - Natural
 - Human Induced
- Groupings/Organizations
 - Types of Agencies
 - Groupings
- Functions
- Activities
- Resources

All Hazards

I. Natural Hazards

Biological

- Human
- Animal
- Plant

Meteorological/ Elemental

- Drought
- Flood/Storm Surge/Tsunami
- Ice/Snow
- Fire
- Wind-Tornado/Hurricane

Geological

- Earthquake
- Landslide
- Avalanche

Resulting from:

Acts of God / Mother Nature

II. Human Induced Hazards

Non-intentional

- Energy
- Finance
- Information/
Communication
- Agriculture
- Health
- Environment
- Transport
- Public safety/
security
- Government
operations

Resulting from:

- Human Error
- System Failure

Intentional

- Energy
- Finance
- Information/
Communication
- Agriculture
- Health
- Environment
- Transport
- Public safety/
security
- Government
operations
- Civil unrest
- Terrorism
- International Tension
- Criminal Acts
- War

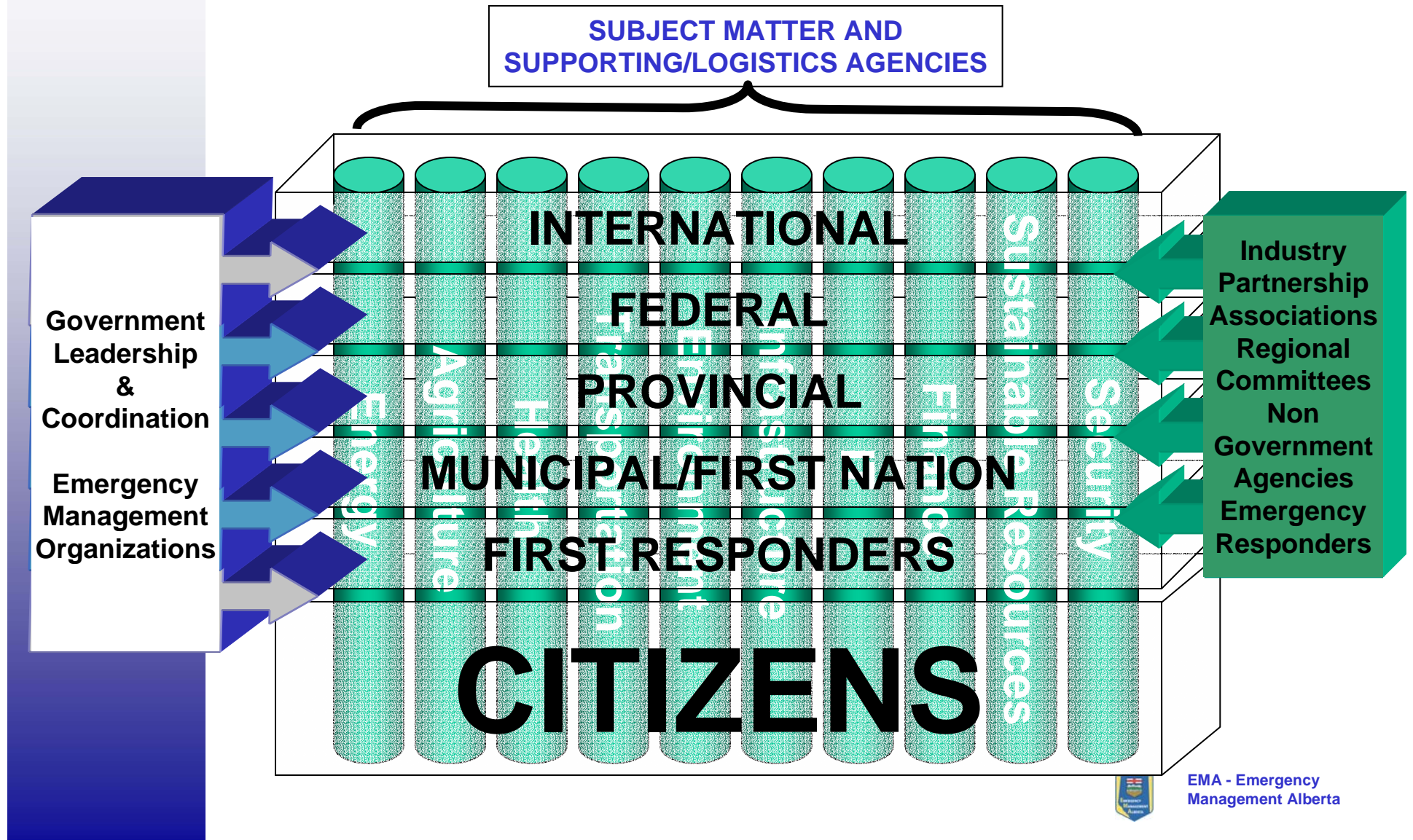
SAFETY

SECURITY

Types of Agencies

<p>Subject Matter Agency</p>	<p>The organization assigned by legislation, regulation, policy or a plan to lead in the emergency management of a specific hazard;</p>
<p>Coordinating Agency</p>	<p>The organization assigned by legislation, regulation, policy or a plan to coordinate the efforts of different orders of government, supporting/logistic agencies and other emergency management partners to coordinate requests from the lead agency to deal with the direct affects of the specific hazard, while dealing with the indirect results of the specific hazard;</p>
<p>Supporting/ Logistics Agency</p>	<p>Organization(s) assigned by legislation, regulation, policy or a plan to assist in the emergency management of a specific hazard;</p>

Groupings



Functions

Mitigation/Prevention	Attempting to maintain a normal state of life by removing/minimizing the items at risk from the effects of hazard(s), or by reducing the effects of the hazard(s) on the items at risk, with an aim to prevent or reduce a disaster impact when it occurs; e.g. building fireguards, river dikes, security measures, legislating building codes.
Preparedness	Recognizing that perfect mitigation is impossible, building capability to effectively and rapidly respond when items at risk are about to be or are affected by hazards. It includes the planning, exercising and education necessary to achieve a state of readiness for incidents, disasters and major emergencies; e.g plans, simulation exercises, equipment stockpiles
Response	Executing the capability to minimize the losses to items at risk (with an emphasis to prevention of injury/loss of life) when they are effected by hazards.
Recovery	Returning the effected organization/group to a state of normal life, after it has been effected by a hazard. Commences ASAP during Response and runs concurrently.



Activities

- **Governance**
 - Program Management
 - Command
- **Operations**
 - Planning
 - Intelligence
 - Training
- **Logistics**
 - Finance
 - Administration
- **Communications**
 - Internal
 - External
 - ICT
- **Coordination**
 - Public/Private

Integrating the Dimensions

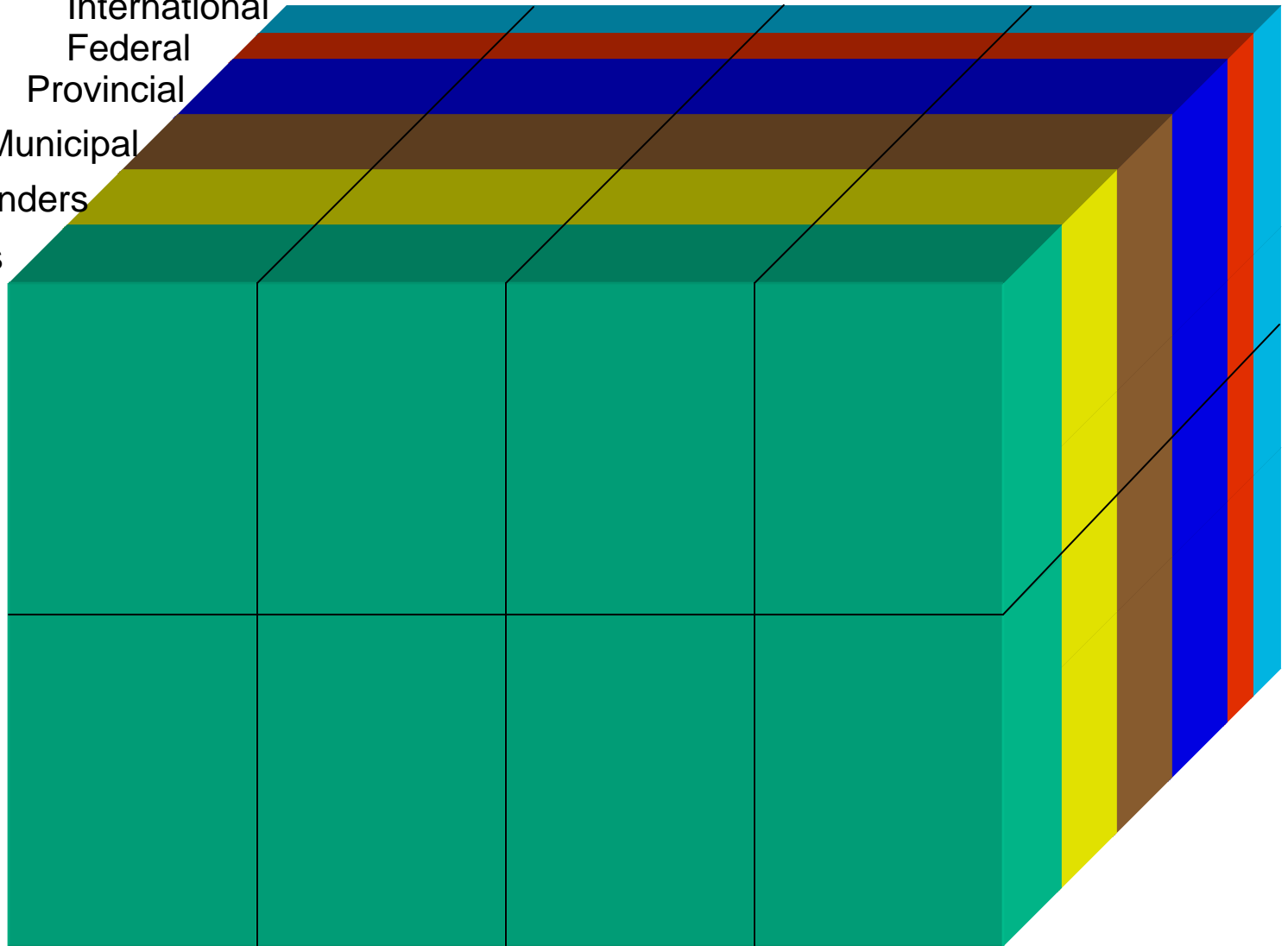
**GROUPINGS
ORGANIZATIONS**

International
Federal
Provincial
Municipal
First Responders
Citizens

HAZARDS

Human Induced

Natural



Mitigation

Preparation Response

Recovery

FUNCTIONS



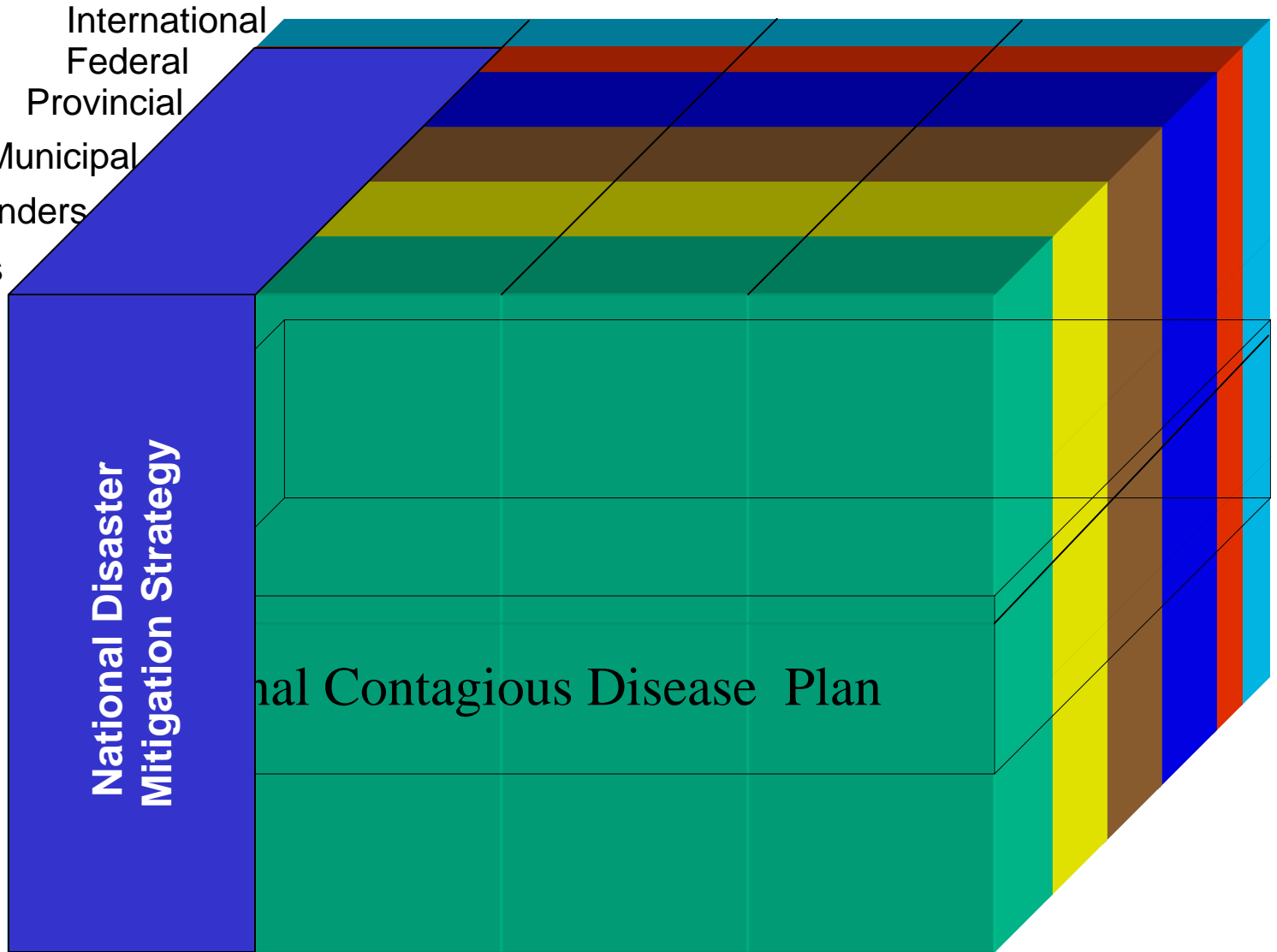
Integrating the Dimensions

**GROUPINGS
ORGANIZATIONS**

- International
- Federal
- Provincial
- Municipal
- First Responders
- Citizens

HAZARDS

- Human Induced
- Natural



Mitigation

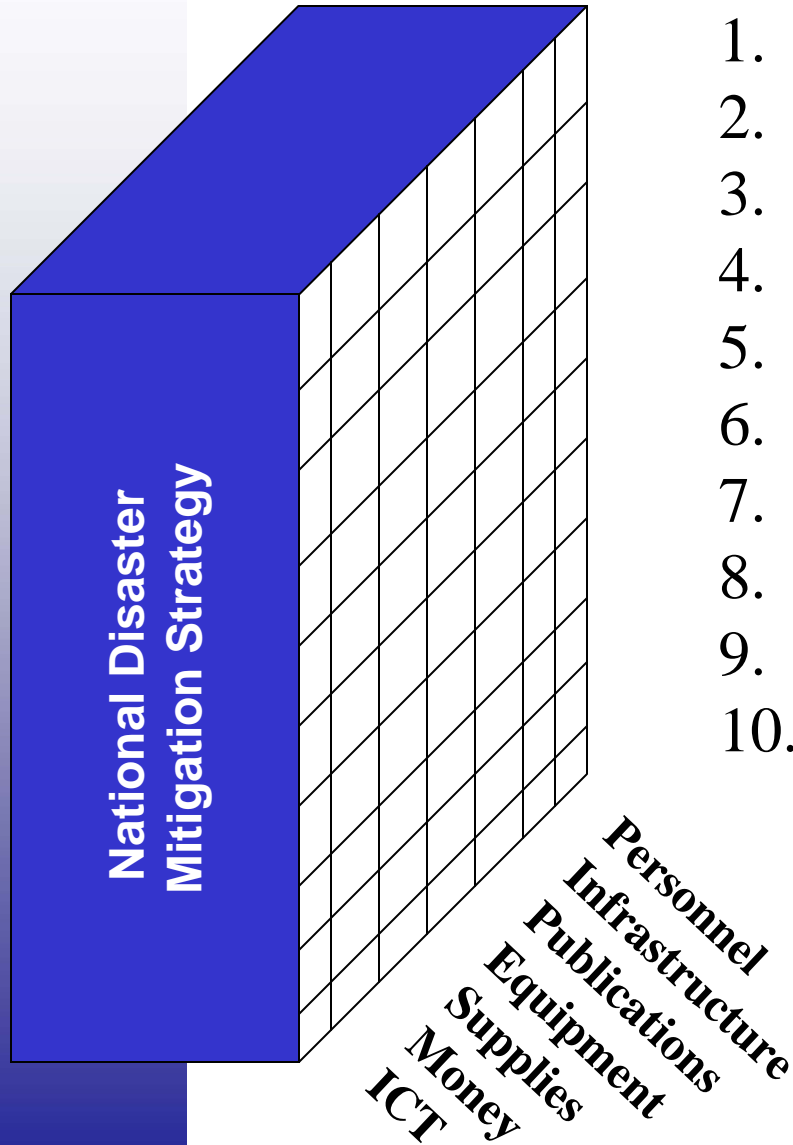
Preparation Response

Recovery

FUNCTIONS

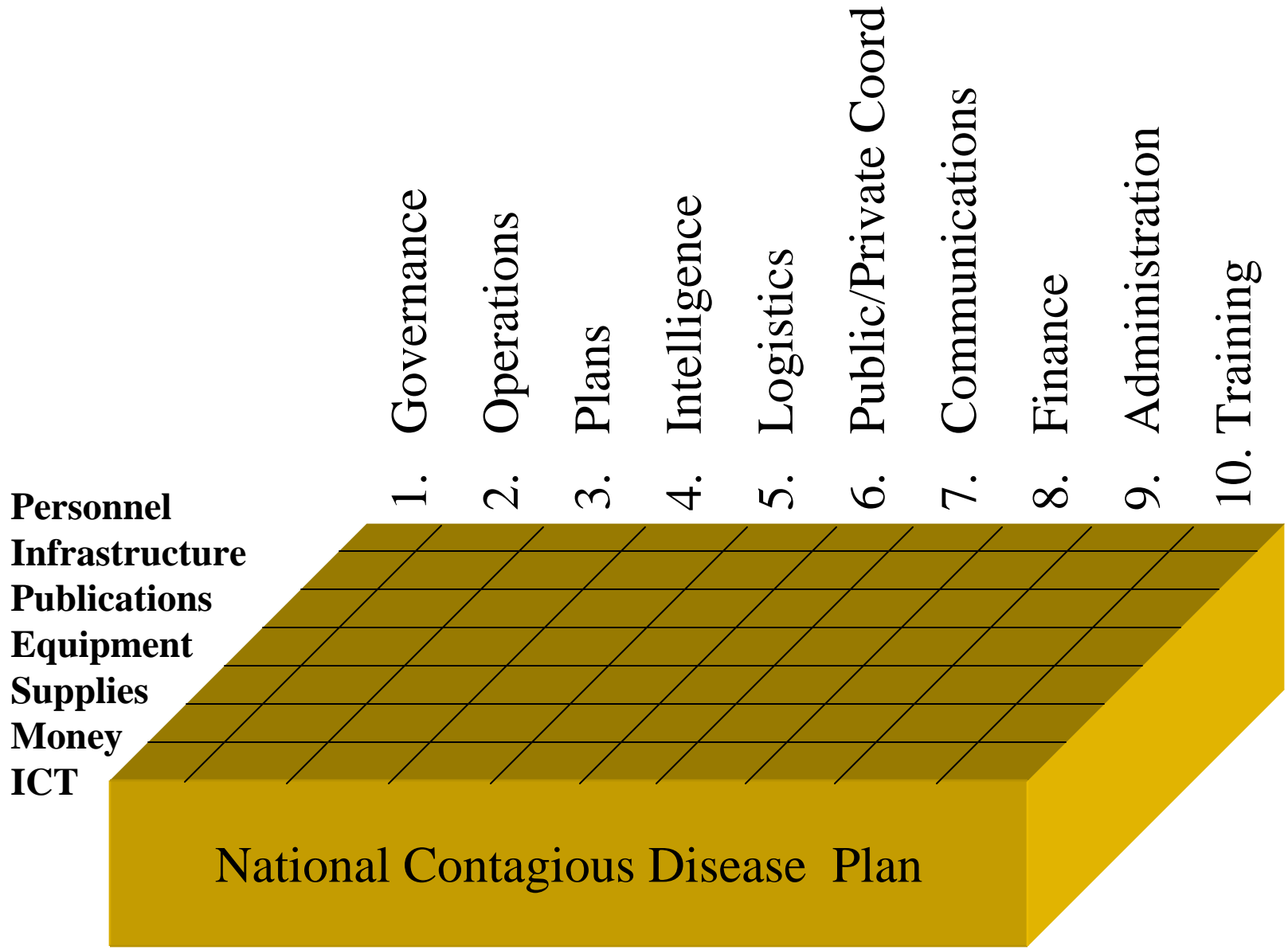


Integrating the Dimensions




1. Governance
2. Operations
3. Plans
4. Intelligence
5. Logistics
6. Public/Private Coord
7. Communications
8. Finance
9. Administration
10. Training

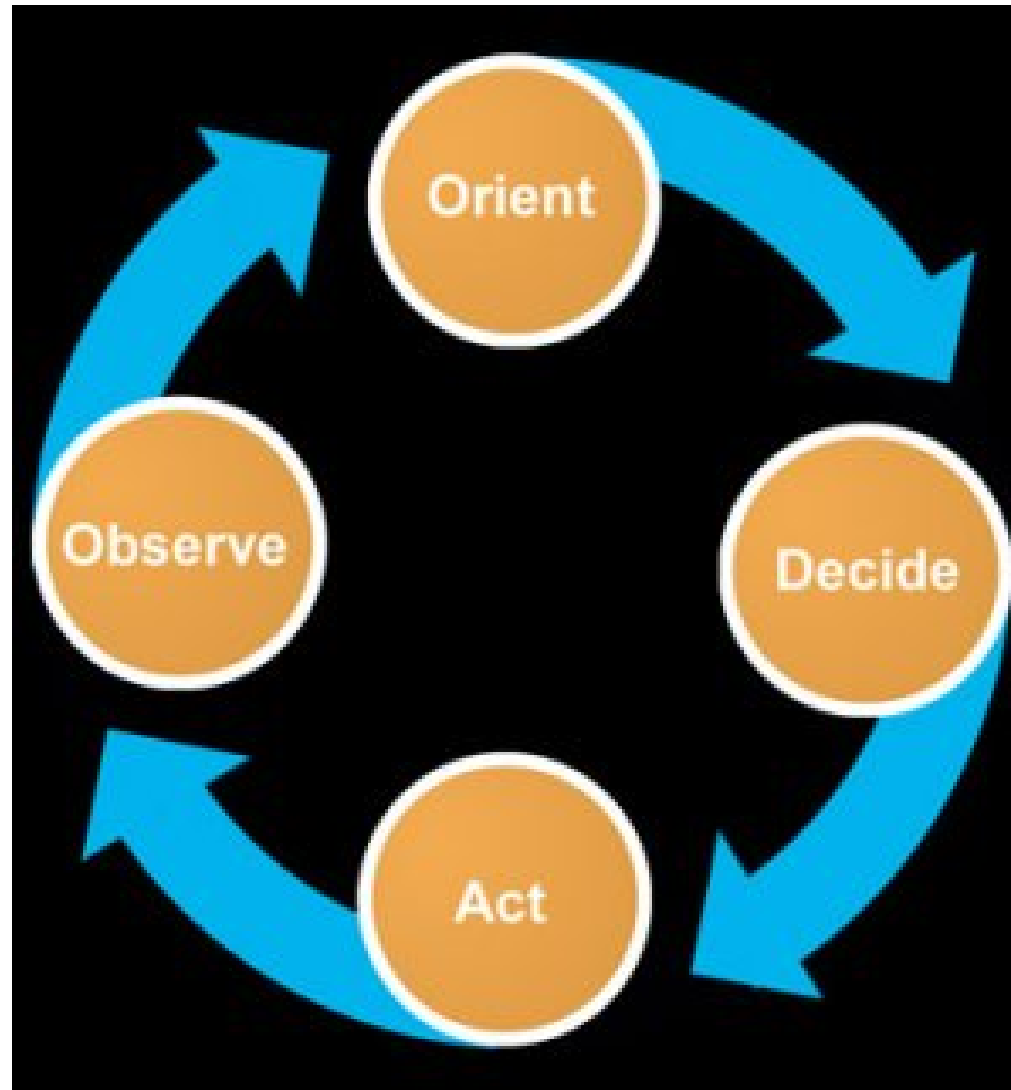
Integrating the Dimensions



Outline of Presentation

- Vision
- Concept/Philosophy
-  Application
- Concluding Remarks

Boyd Cycle – the “OODA Loop”



Observe

- Implicit Guidance and Control
- Outside Information
- Unfolding Circumstances
- Unfolding Environmental Interaction

Gathering Information

Data by sector – static and dynamic
Single data entry shared often

Orient

- Analyze
 - Planning Process/Factor analysis
 - Traditions
 - Experience
 - New information

Analyzing the Situation

Decision Models

Planning and Response Algorithms

Single data entry shared often

Decide

- Decision Making
 - Isolation
 - Communication
 - Collaboration/Coordination
 - Integration/Synchronization

Decision Tracking

Tracking the decision and associated tasks
Single data entry shared often

Act

- Projecting the decision
- Unfolding Interaction with the environment

Action

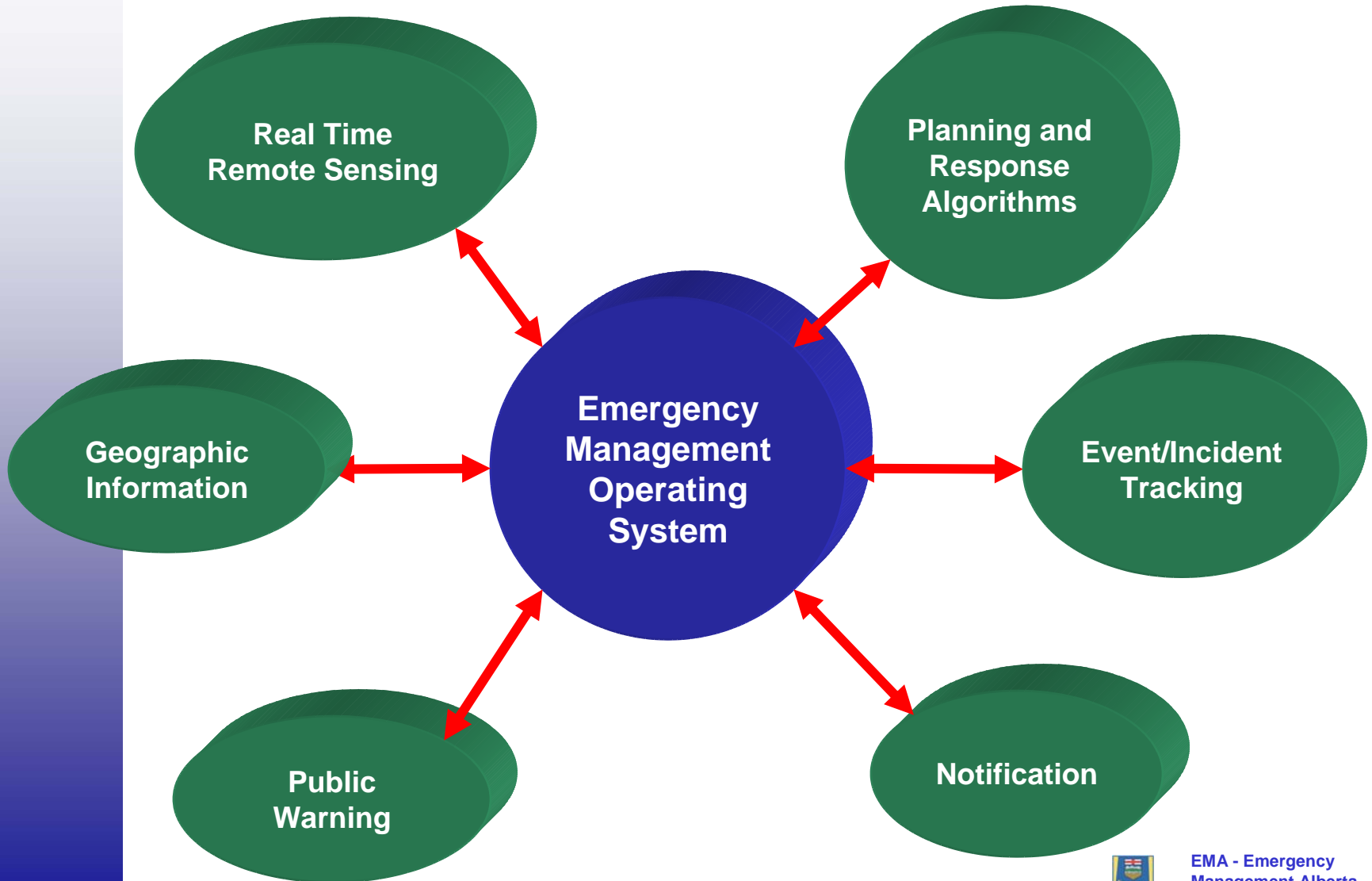
Projecting action through available medium
Notification and Public Alerting
Resource Tracking

Outline of Presentation

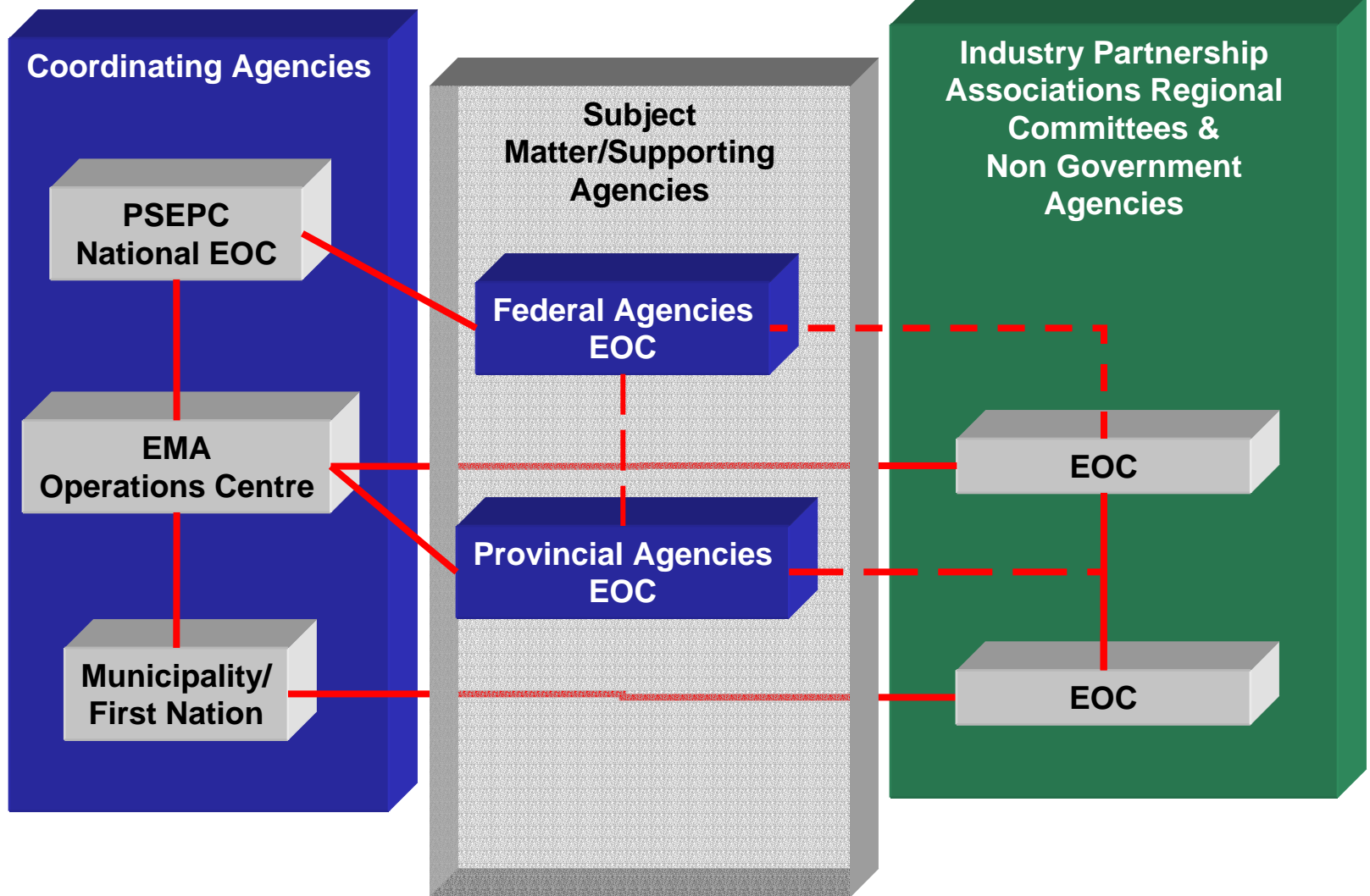
- Vision
- Concept/Philosophy
- Application
- Concluding Remarks



Vision



Process



Concluding Remarks

- GIS provides tremendous potential to Decision Makers
- Vision linked to philosophy and process situates the need
- Cultural change from 'Need to *Know*' to 'Need to *Share*'
- Technology enables decision making and integration

Emergency Management in Alberta



**Philosophy and Framework
Transforming Government Conference
Edmonton, Alberta**