



# The Community Health Atlas

**Brendan Mather**  
Population Health  
Surveillance Unit, VIHA

**Jeremy Bart**  
Information Technology,  
CRD

June 5, 2006

# Community Health Atlas



## Overview



- ◆ Population Health
- ◆ The Atlas
  - ▶ Vision
  - ▶ Background
  - ▶ Components
    - Indicator Maps
    - Community Resources
  - ▶ Next Steps
  - ▶ The Technology

# Community Health Atlas



## Population Health Approach



CAPITAL  
REGIONAL  
DISTRICT

- ◆ An approach to health planning and research that is population-based, as endorsed by Health Canada
- ◆ Aims to improve health of entire population and to reduce inequities in health among groups
- ◆ Considers health determinants, including social, economic and physical environments, to assess community needs and vulnerabilities

# Community Health Atlas



## The Vision



- ◆ To promote the dissemination and use of health-related information in local decision-making.
- ◆ To inform the public about the health status and community resources in their neighbourhoods

# Community Health Atlas



## Background



- ◆ Initiated as a project in April 2004
- ◆ Partnered with the Capital Regional District (CRD), Victoria, BC
- ◆ Designed with four users in mind:
  - ▶ Health planners/researchers
  - ▶ VIHA public health program managers (CCFL, HPES, Tobacco, Food Security, Emergency Planning, etc.)
  - ▶ Community Groups
  - ▶ General public

# Community Health Atlas



## Indicator Maps



Will include the following statistics:

- ◆ Socio-Economic Indices
- ◆ Census Data
- ◆ Birth Related Data
- ◆ Death Related Data
- ◆ Hospital Services Utilization Data

**\*Will contain over 100 statistics**

# Community Health Atlas



## Indicator Maps



- ◆ Select an indicator group (i.e. Birth Related)
- ◆ Select an indicator (i.e. Pre-term Births)
- ◆ Create map / create report

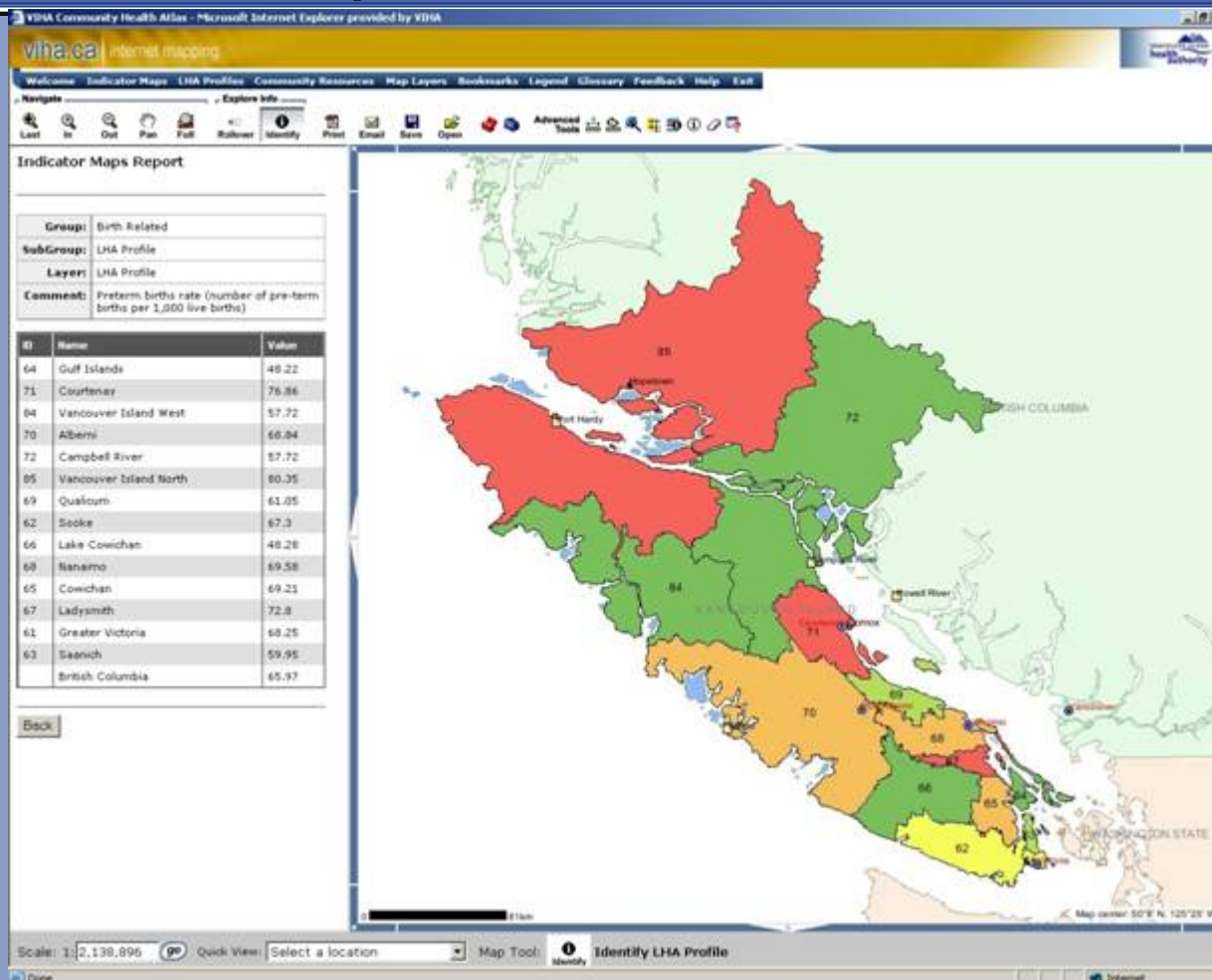
# Community Health Atlas



## Indicator Maps



CAPITAL REGIONAL DISTRICT





# Community Health Atlas



## Community Resources Query



CAPITAL  
REGIONAL  
DISTRICT

- ◆ **Step 1:**
  - ▶ Type in an address
- ◆ **Step 2:**
  - ▶ Select the facilities you would like to query
  - ▶ Select a maximum distance (500m, 1km, 2km)
- ◆ **Result:**
  - ▶ All selected facilities within the specified distance will appear in the map window with a report in the left frame containing attribute data (phone number, address, etc.)



# Community Health Atlas



## Community Resources Query



CAPITAL  
REGIONAL  
DISTRICT

### ◆ Challenges

- ▶ Deciding what data to include
- ▶ Collecting, verifying, and maintaining data for all VIHA
- ▶ Privacy Issues

# Community Health Atlas



## Next Steps...



- ◆ Publish this site to internal VIHA users and make it publicly available on the internet
- ◆ Address the community resources query challenges
- ◆ Monitor site usage and respond to user feedback

## The Technology



### ESRI ArcIMS (Internet Map Server)

- Serves Shapefiles and ArcSDE Geodatabase

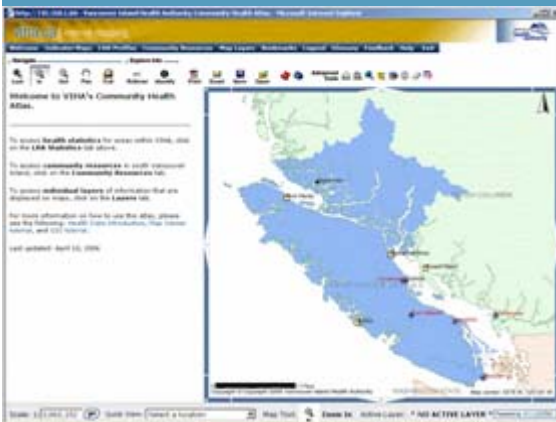
### Geocortex IMF – Latitude Geographics

- Serves ASP-generated HTML output pages

### GIS Database contains layers from numerous provincial, municipal and regional partners

- Lot boundaries
- Political boundaries
- Census boundaries
- Health Facilities

## Steps in Building the Site



## Define workflow

- Indicator Maps
- Community Resources
- Map Layers

## Collect and organize data

- Rectify boundaries
- Health Services contact information

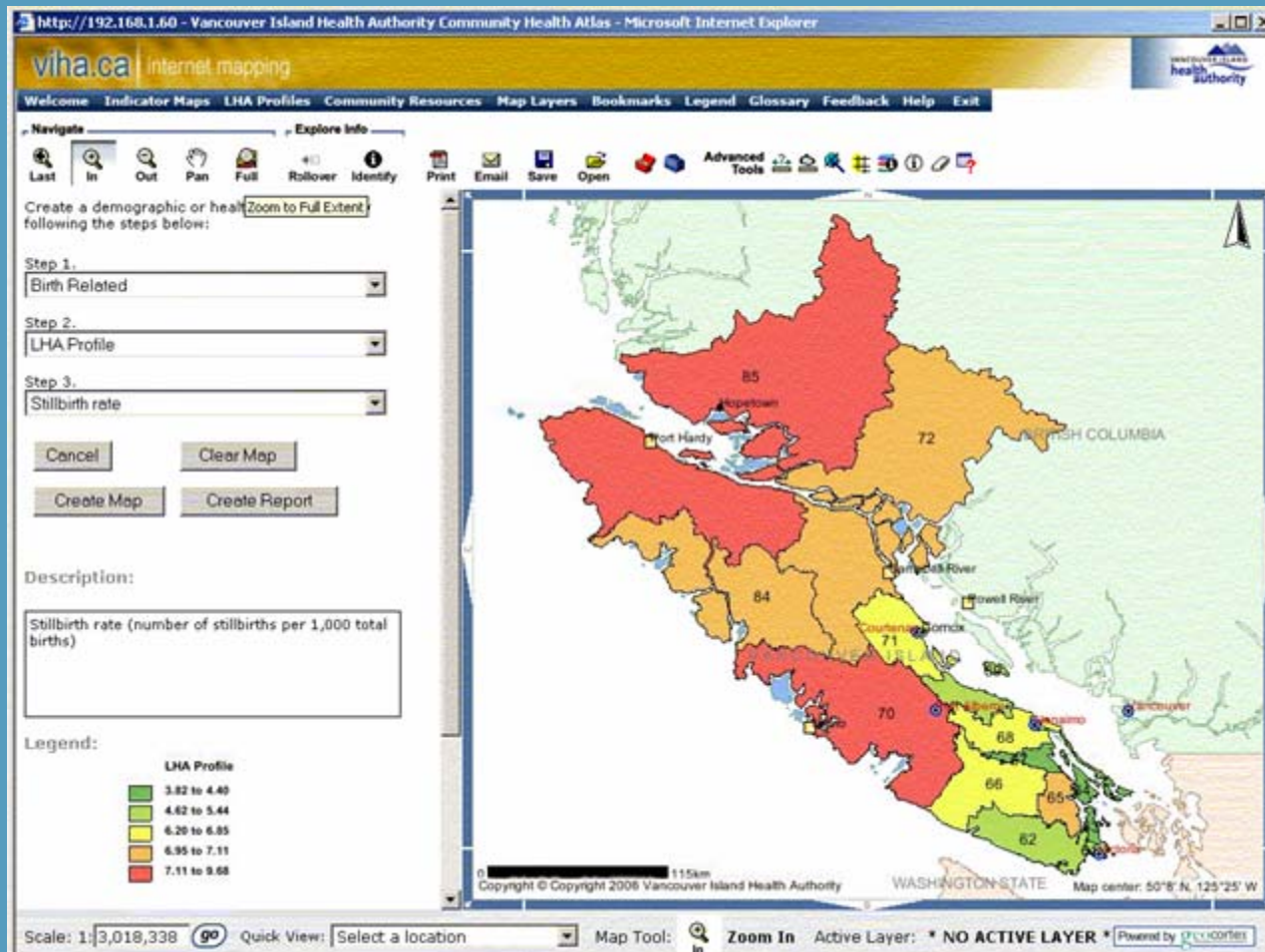
## Link data to the Map

- Define key fields
- Theme on external data tables
- Customize reports



## Indicator Maps

Dynamic thematic mapping of health statistics information



## Community Resources

Query and locate within your neighbourhood

The screenshot shows the 'viha.ca internet mapping' interface. The top navigation bar includes links for Welcome, Indicator Maps, LHA Profiles, Community Resources, Map Layers, Bookmarks, Legend, Glossary, Feedback, Help, and Exit. Below this is a 'Navigate' section with icons for Last, In, Out, Pan, Full, Rollover, Identify, Print, Email, Save, Open, and Advanced Tools. The main content area is titled 'Query Results' and displays two search results:

Found 2 addresses.

**1. 585 Tait Street (Zoom)**  
Saanich V8Z 2E1

<b>Facility Name</b>	<b>TAIT STREET</b>
Facility Type	Adult Residential Care - 100
Address	585 Tait Street
Municipality	Saanich
Postal Code	V8Z 2E1
Facility Owner	Alex Stephen
Facility Telephone Number	479-4696

**2. 3578 Elliston Avenue (Zoom)**  
Saanich V8X 1R5

<b>Facility Name</b>	<b>ELLISTON CARE HOME</b>
Facility Type	Adult Residential Care - 100
Address	3578 Elliston Avenue
Municipality	Saanich
Postal Code	V8X 1R5
Facility Owner	Robert Warren McGrath
Facility Telephone Number	385-4210

At the bottom of the interface, there is a 'Back' button, a 'New Query' button, a scale of 1:6,922, a 'Quick View' dropdown menu, a 'Map Tool: Pan' button, and an 'Active Layer: Lot Boundaries' indicator. The map itself shows a residential area with streets like Broadway St, Tait St, and Elliston Ave, and two blue location markers corresponding to the search results.



## Public Web GIS Sites

[viha.ca](http://viha.ca) | internet mapping



Information tool  
designed for any  
public group:

- Community Organizations
- Health Facilities Planners
- Health Workers and Inspectors
- Schools
- General public

Aid in informed  
decision making

Thank You

Contact us:

[jbart@crd.bc.ca](mailto:jbart@crd.bc.ca)

[Brendan.Mather@viha.ca](mailto:Brendan.Mather@viha.ca)

for more information