

iMove[®]/RCRS Project Briefing & Demonstration

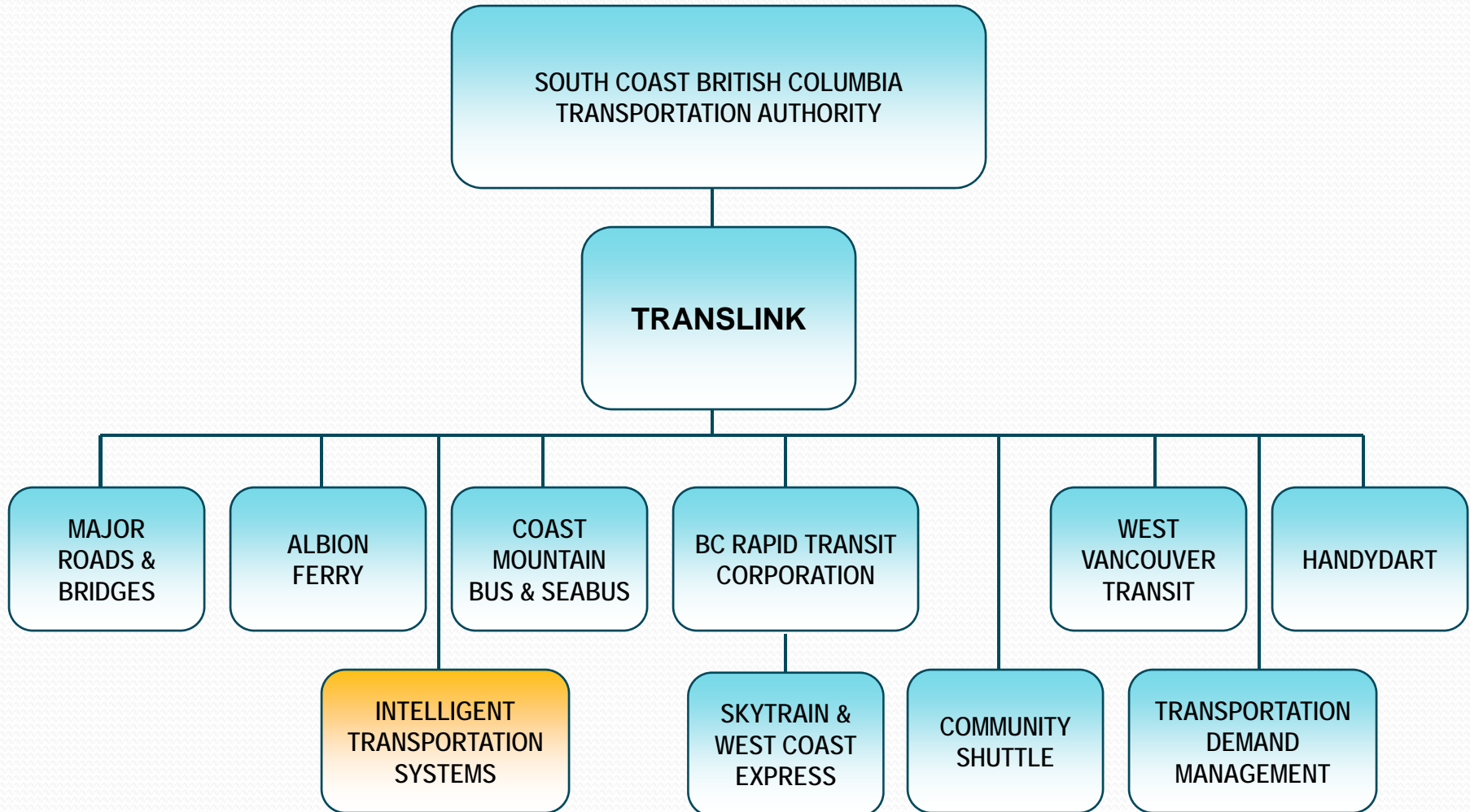
URISA Conference
December 13, 2007



Agenda

- Introductions
- TransLink and ITS Corporation of BC
- iMove[®] Program Goals and Concept of Operations
- Stages of Development
- Technical Overview
- iMove/RCRS Demonstration
- Q&A

TransLink and ITS Corporation



Project Funding / Participation

Sponsored by the ITS Corporation

Funding Partners

TransLink



Transport Canada



Western Economic Diversification



BC Ministry of Transportation



Vancouver Port Authority



Participating Partners

Greater Vancouver
Municipalities

ICBC

E Comm

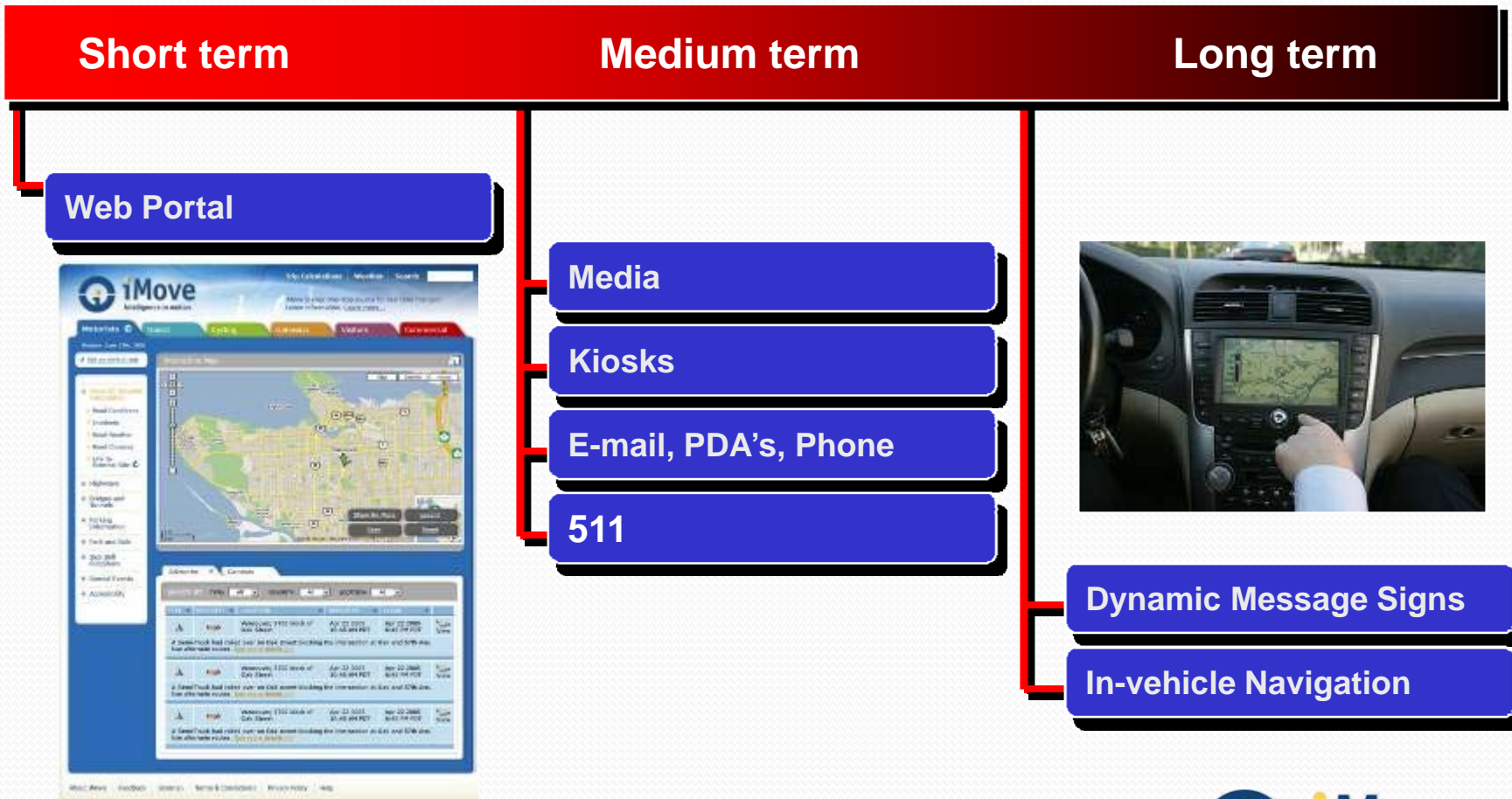
UBC

iMove® Program Goals

- Accurate, timely, reliable pre-trip and en-route information
- Access to traffic conditions and other regional transportation information by user groups:
 - Motorists
 - Transit Users
 - Cyclists
 - Visitors
 - Inter-Regional Travellers
 - Commercial Transportation
 - Public safety agencies
 - Other stakeholder agencies

iMove® Concept of Operations

Dissemination Methods



iMove® Concept of Operations

Information / Functions

- *Dynamic Information:*
 - Road incidents
 - Service disruptions (all modes)
 - Congestion (speeds / travel time)
 - Arrival/departure information (YVR, BC Ferries)
 - Border wait times
 - CCTV images
 - Ministry, Municipalities, Agencies, Borders
 - DMS data displays
 - Trip planner (Transit now, multi-modal soon)

iMove® Concept of Operations

Information / Functions

- *Static Information:*
 - Transit schedule, routes, & fares
 - Multi-modal (rail / ferry / airport)
 - schedules, routes, & fares
 - Public and private-sector services
 - Cycling Routes
 - Parking

Benefits to Users

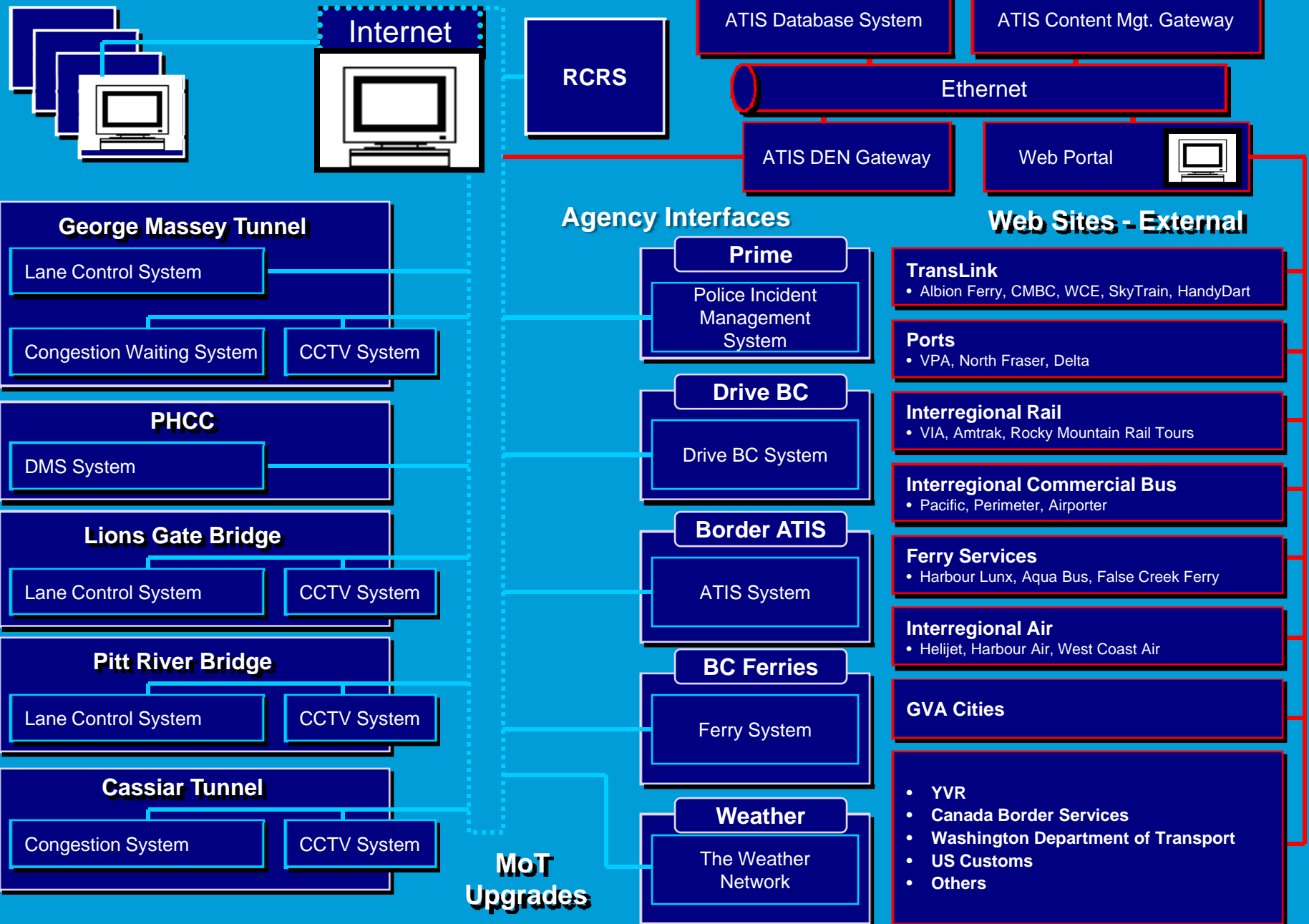
In a single web site:

- Awareness of transit service disruptions
- Notice of planned events and construction
- Schedule / arrival information for public and private transportation services:
 - YVR (arrivals/departures, schedules, parking)
 - BC Ferries (Lower Mainland routes)
 - Private bus lines
 - Cruise ships (arrivals/connections)
 - False Creek Ferries, etc.
 - Border Delays
- Improved mobility, increased reliability and reduced congestion

iMove®: Stages of Development

Milestone	Completion Date
Specific Project Approval (SPA)	July 2005
System Architecture & Detailed Design	November 2006
Google Map Prototype	September 2006
System Development and Acceptance	February, 2007
Consumer Testing and Refinement	April, 2007
Soft Launch (Partners & Web Panel)	May, 2007
Web Panel Usability Testing	Aug, 2007
Maintenance Release #1	September, 2007
Content Development	November, 2007
RCRS Integration	November, 2007
iMove Launch	November 26, 2007
Maintenance Release #2	Q1 – 2008 [In Progress]

System Design Overview



RCRS Functionality

- RCRS provides the ability for contributors, through a simple web interface, to enter and view:
 - Incident/accident locations & status (automated ingest)
 - Road conditions & reports (automated ingest)
 - Construction location, duration, & delays
 - Roadway & lane closures
 - Detour & alternate route information
 - Weather information, including warnings, watches, & RWIS
 - Special events
- Currently provided to all 21 Metro Vancouver municipalities, 5 major project teams, TransLink and VANOC

iMove®

- Tabbed Interface
- Google Maps Interface
- Advisories & Cameras
- Links Outside the Region

The screenshot shows the iMove website interface for Motorists. The top navigation bar includes "Trip Calculations", "Weather", and "Search". The main header features the iMove logo and the tagline "Intelligence in motion". Below the header, there are several tabs: "Motorists", "Transit", "Cycling", "Gateways", "Visitors", and "Commercial". The "Motorists" tab is active, displaying a date of "December 18, 2006" and a placeholder text "Lorem ipsum dolor sit amet, consectetur adipiscing elit. Duis elementum...".

The interface is divided into several sections:

- Left Sidebar:** Contains a "Set as default tab" button and a list of links: "Map, Cameras, Advisories", "Drive BC Traveller Information", "Drive BC Road Conditions", "Highways", "Bridges and Tunnels", "Parking Information", and "Park and Ride". Below this is an "Advisories Legend" with icons for "Current Events", "Current Incidents", "Current Construction", "Future Events", "Future Incidents", and "Future Construction".
- Interactive Map:** A Google Maps interface showing a map of the Greater Vancouver region. The map includes various icons for advisories and cameras. The map controls include "Save", "Reset", "Legend", and "Fullscreen Map".
- Advisories List:** A table displaying a list of advisories with columns for "LOCATION", "TYPE", "SEVERITY", "REPORTED", and "CLEAR".

The table below shows the following data:

LOCATION	TYPE	SEVERITY	REPORTED	CLEAR
11050 155A ST Surrey	Major	Major	Oct 9 2006 12:00 AM	
110th Ave just north of No. 1				See more details >>
16168 CREEKSIDE GROVE Surrey BC	Minor	Minor	Oct 9 2006 12:00 AM	
Incident at 16100 CREEKSIDE GROVE				See more details >>
88th ave and 200th	Major	Major	Oct 9 2006 12:00 AM	
88th ave and 200th				See more details >>
6858 236 st langley	None	None	Oct 9 2006 12:00 AM	
Approx 6050 236 st langley				See more details >>
26000 56th ave aldergrove	Major	Major	Oct 9 2006 12:00 AM	
20000 50th ave aldergrove				See more details >>
5010E Autostar Dr Abbotsford	Minor	Minor	Oct 9 2006	

The bottom of the page features a footer with links for "About iMove", "Feedback", "Sitemap", "Terms & Conditions", "Privacy Policy", and "Help", along with the copyright notice "© 2006 iMove™".

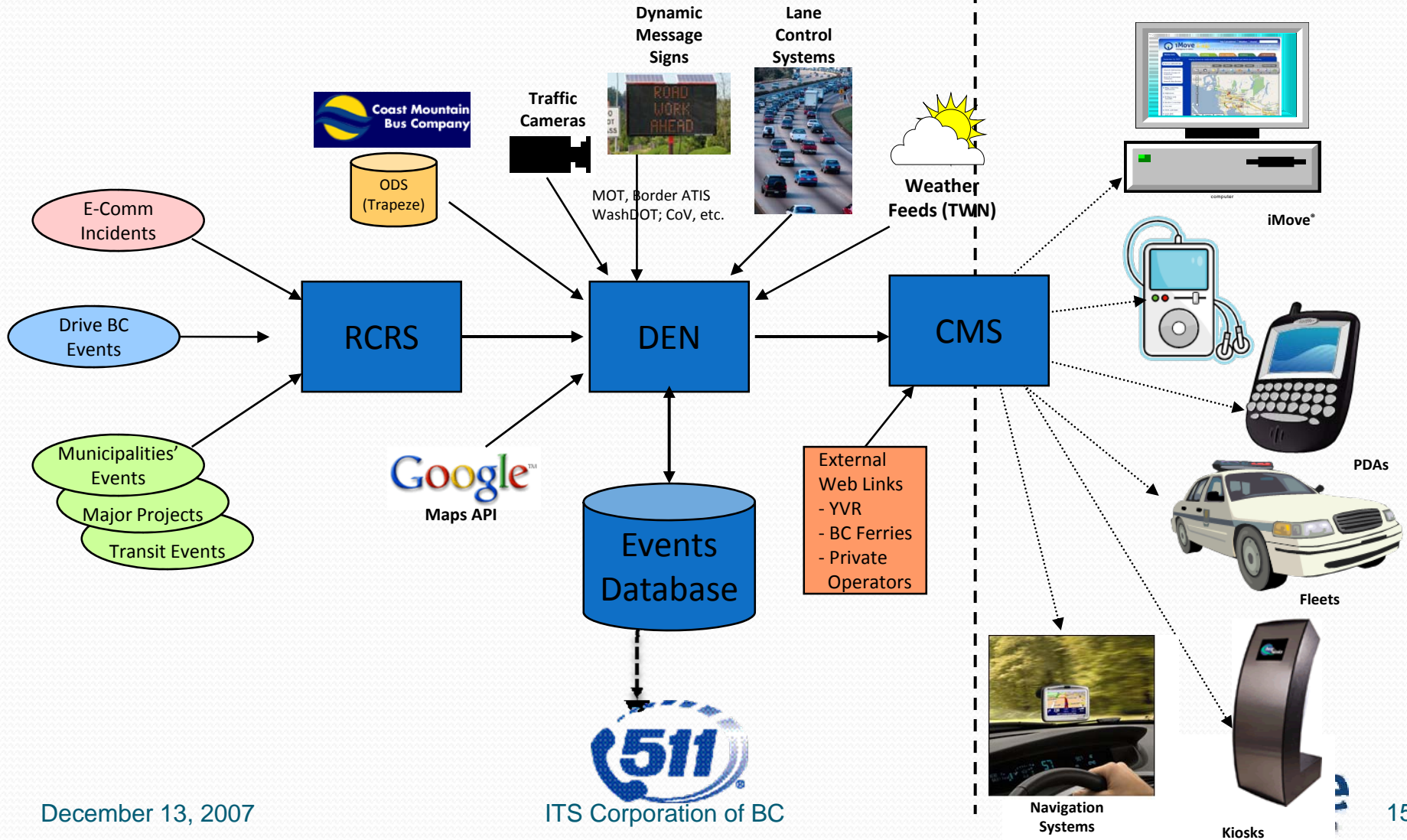
Implications for Metro Vancouver

- iMove provides customers with access to traveller information
- Washington State will provide data (cameras, traffic and signage) to iMove – south of border information
- Municipalities will use RCRS to report construction info
- RCRS is a reporting tool for VANOC to input venue related impacts – before and during games
- iMove can be used in communities outside of Metro Vancouver (Van Island, Whistler, Squamish, Fraser Valley)
- ***Coverage may extend in future to Washington State, Fraser Valley, Vancouver Island and Whistler area***

Future Directions

PROVIDERS:

CONSUMERS:



Questions?

iMove Sponsor:



Keenan Kitasaka

Manager, Intelligent Transportation Systems, TransLink

Keenan_Kitasaka@translink.bc.ca

iMove Technical Manager:

Cam Telford

Consultant

Cam_Telford@translink.bc.ca