

Using GIS in Stanley Park for Restoration and Forestry Planning



Michel Desrochers, Vancouver Park Board, 2008

Storyline

Could the Vancouver Park Board – not fully plugged into the GIS world – make good use of GIS in response to a project requiring a rapid response?



The Windstorms

- **3 storms: the biggest on Dec. 15, 2006**
- **10,000+ trees fell**
- **15% of forest was severely damaged**
- **landslides on steep slope above seawall**
- **structural damage to seawall**











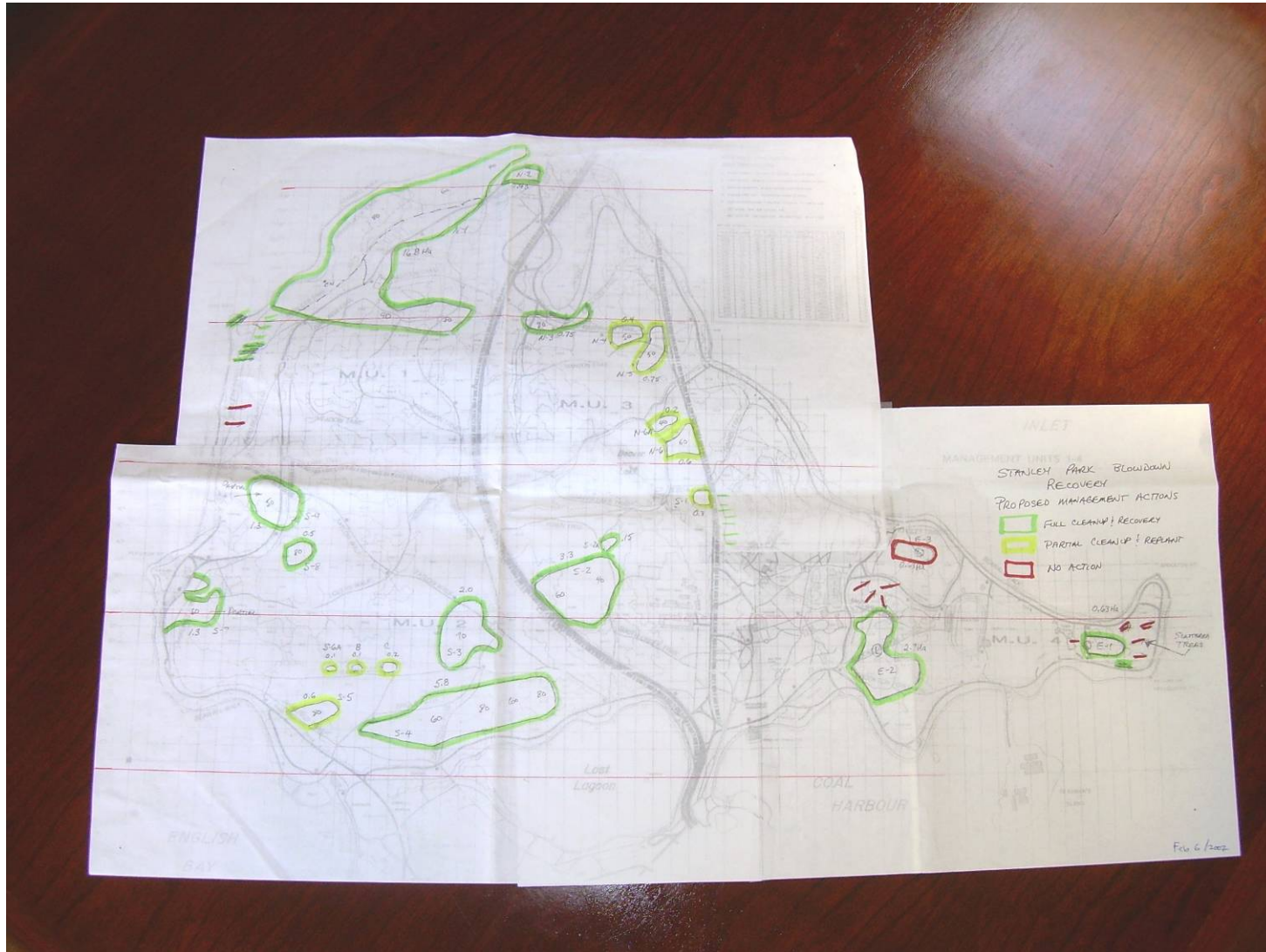




The Challenge

- **Parks Dept. not GIS savvy**
- **Only one staff person with GIS software**
- **Few features in Stanley Park geo-coded**
- **Some geo-coded data available from City**

Our First GIS Map



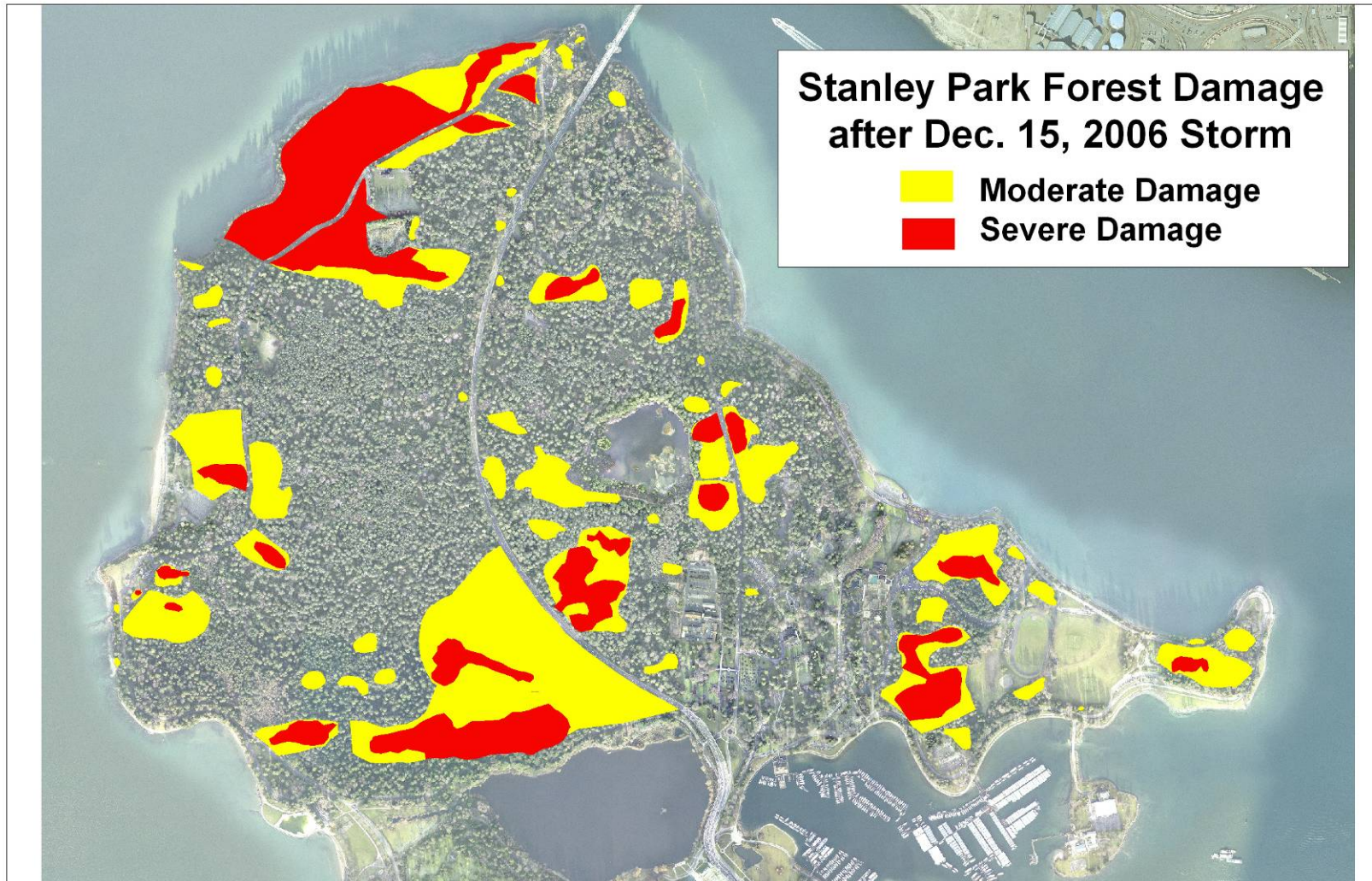
Motivating Factors

- **Stanley Park forest has few reference points (e.g. Park Drive, forest trails)**
- **Project required rapid response**
- **Consultants generated data in GIS format**
- **Consultants expected data in GIS format**
- **Budget was large enough to invest in GIS**

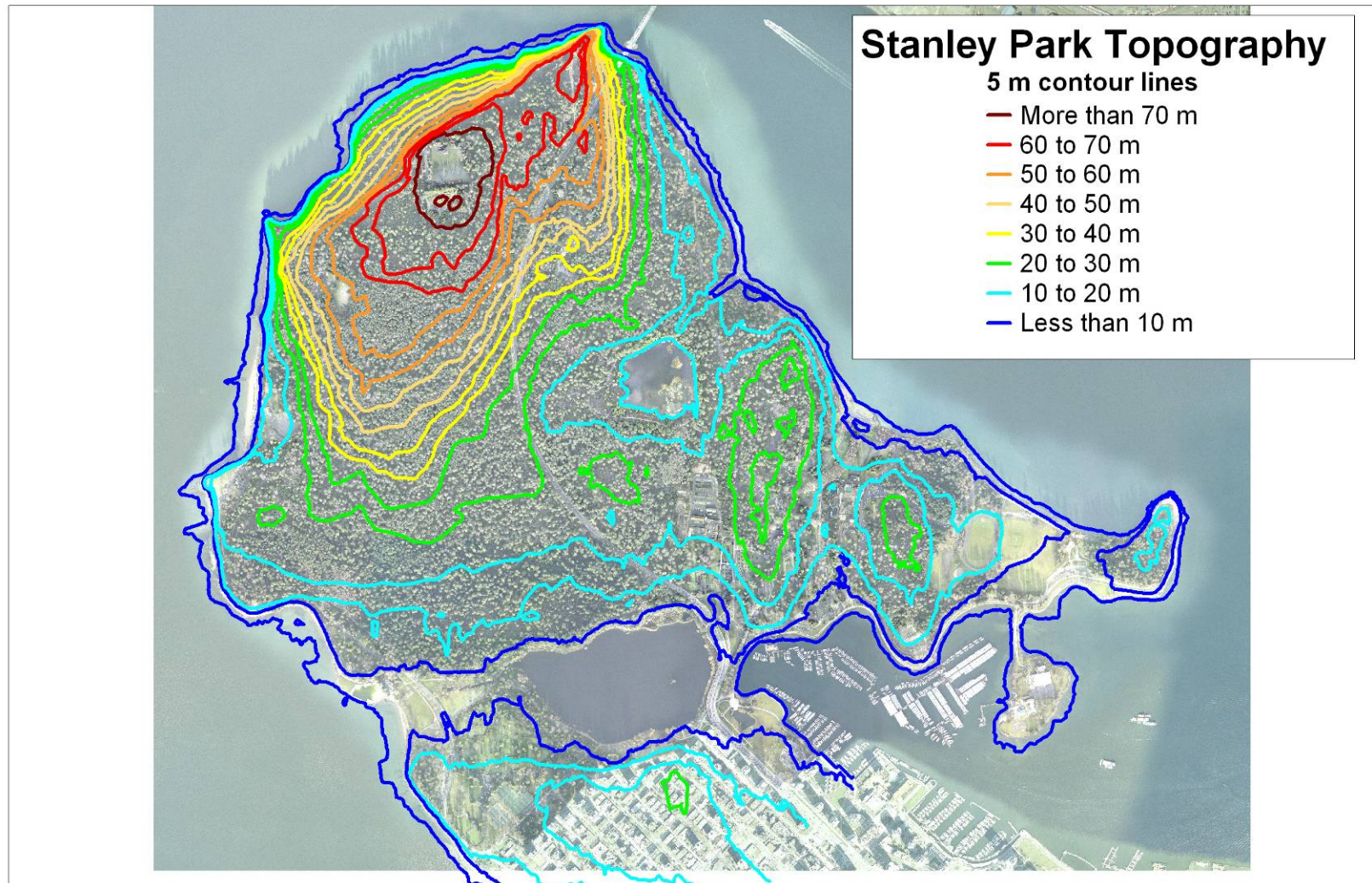
Initial Steps

- **Hired a GIS technician**
- **Obtained additional GIS licenses**
- **Created GIS folder on network**
- **Identified data priorities**
- **Performed data collection and mapping**

Initial Outcomes



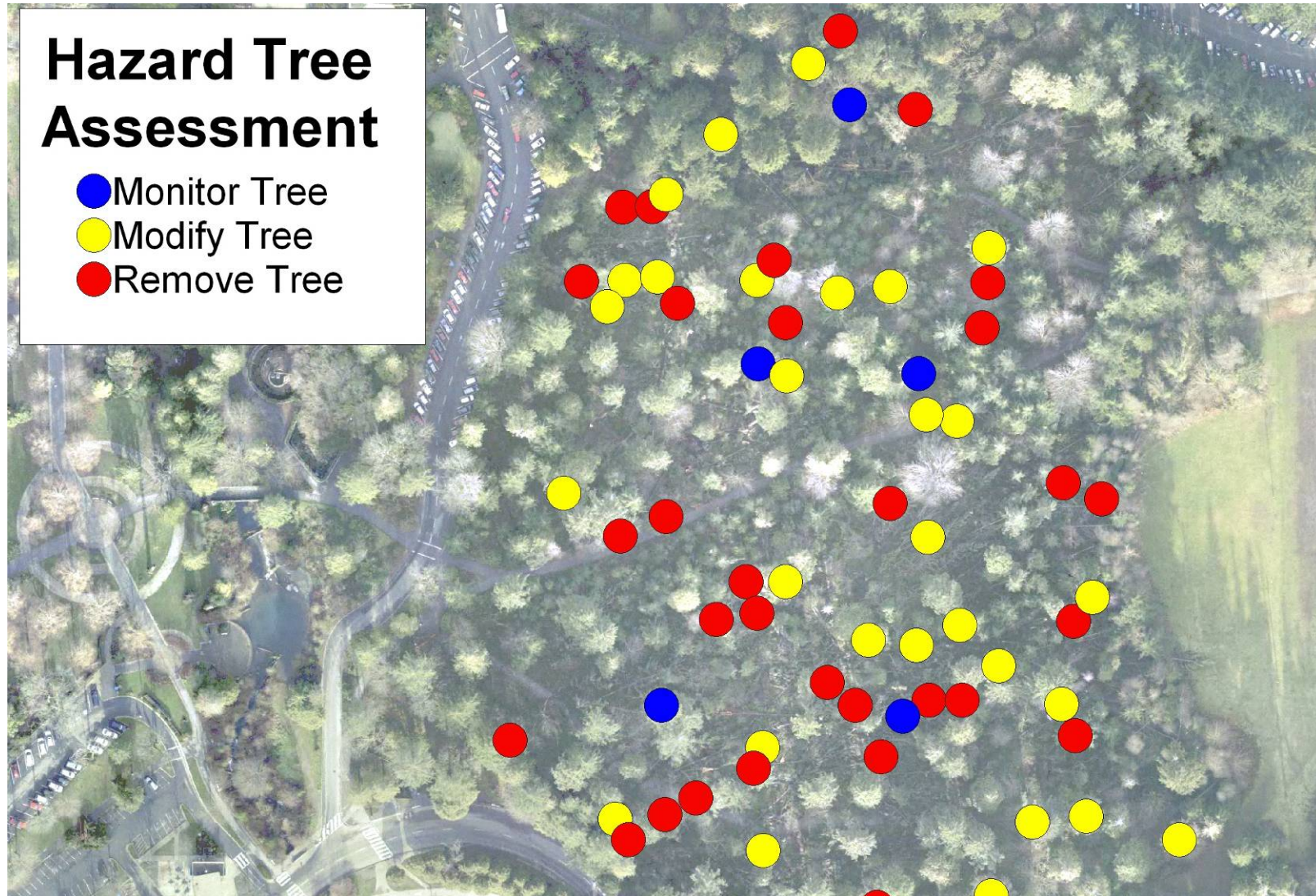
Initial Outcomes



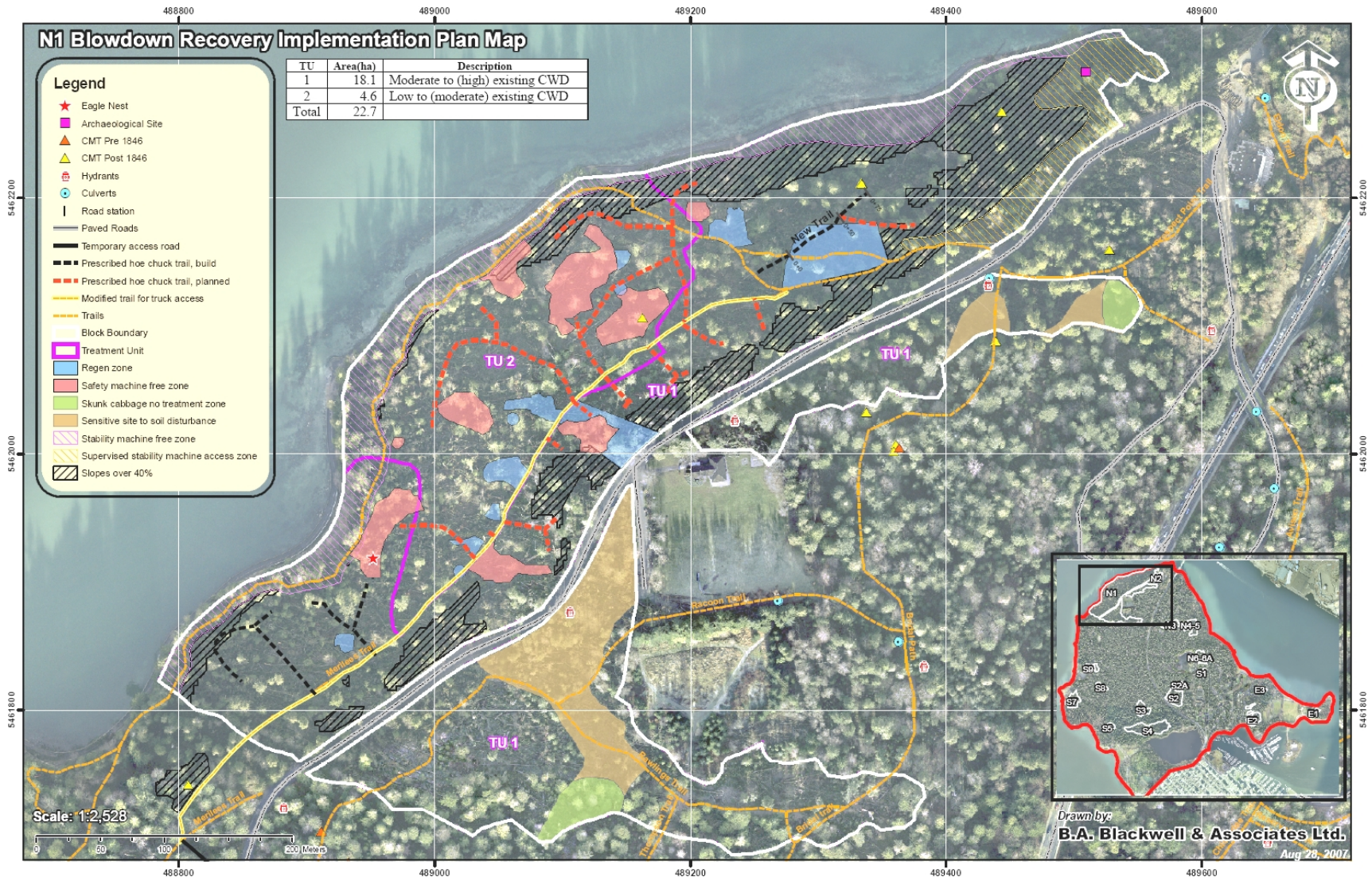
Supporting Restoration Efforts

- **Hazard tree work**
- **Environmental / biological protection**
- **Forest recovery operation**
- **Fire prevention**
- **Infestation prevention (plant, insect)**
- **Slope stabilization**
- **Tree planting**

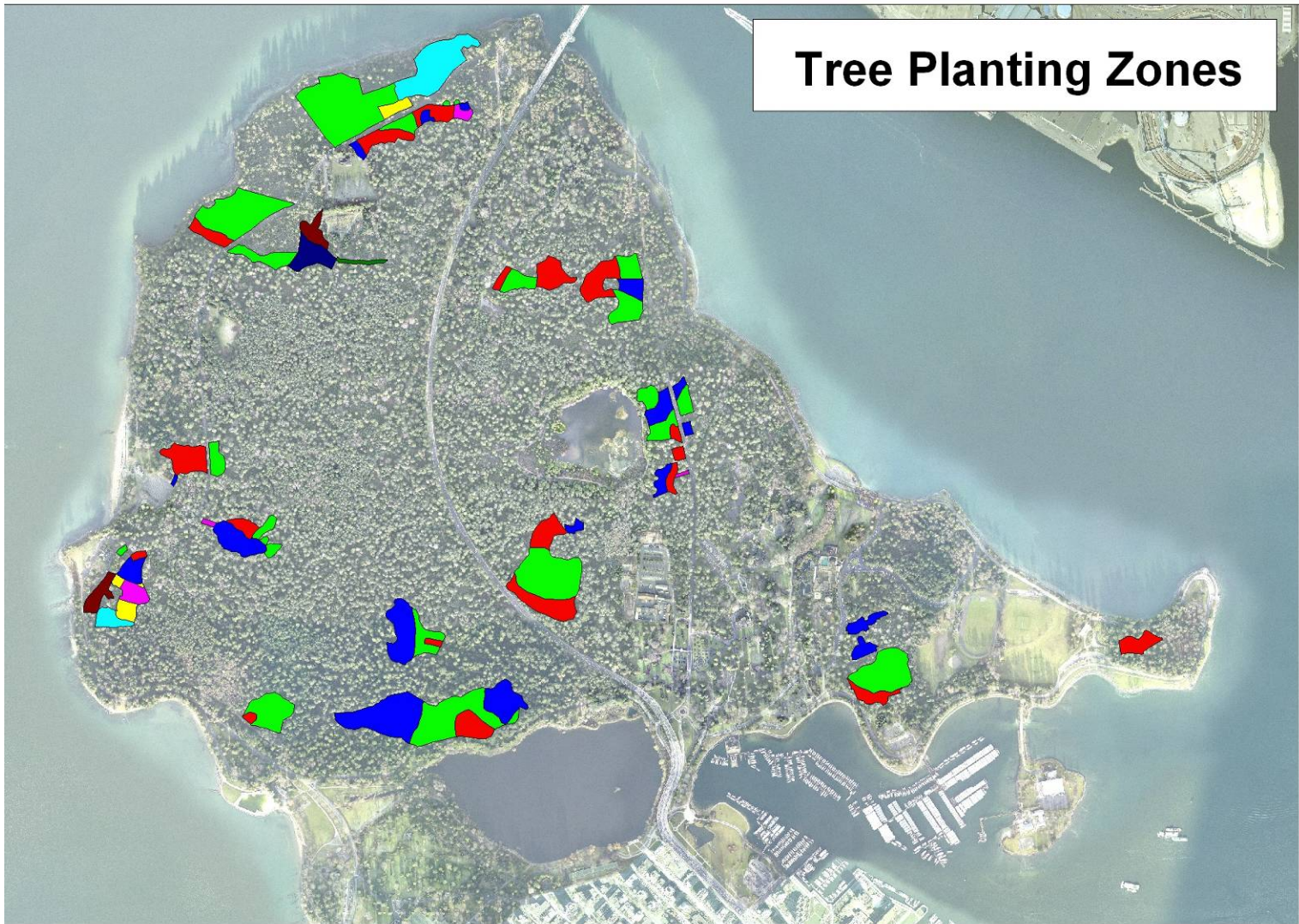
Mid-term Outcomes



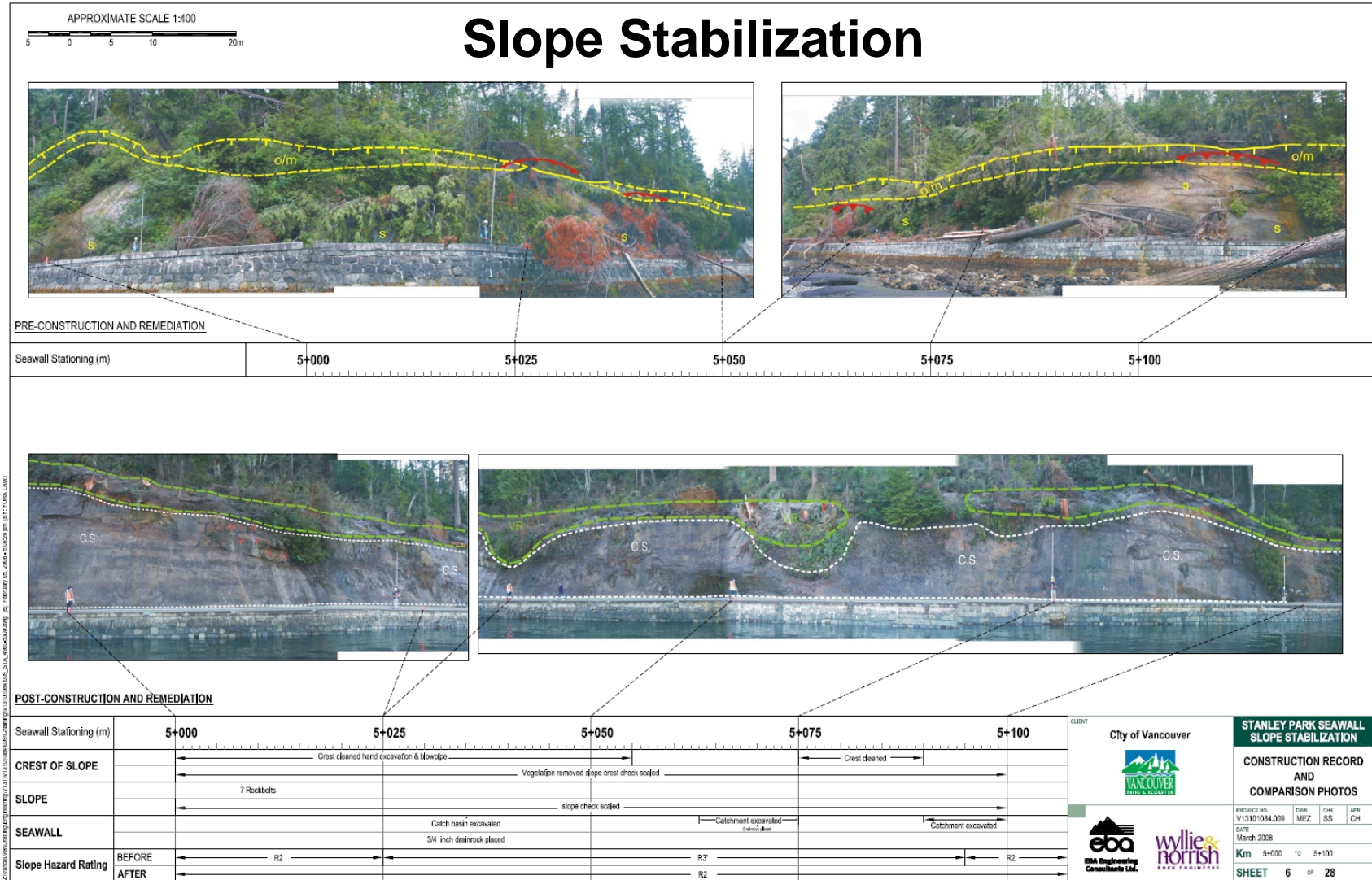
Mid-term Outcomes



Mid-term Outcomes



Mid-term Outcomes



Flagging in the field



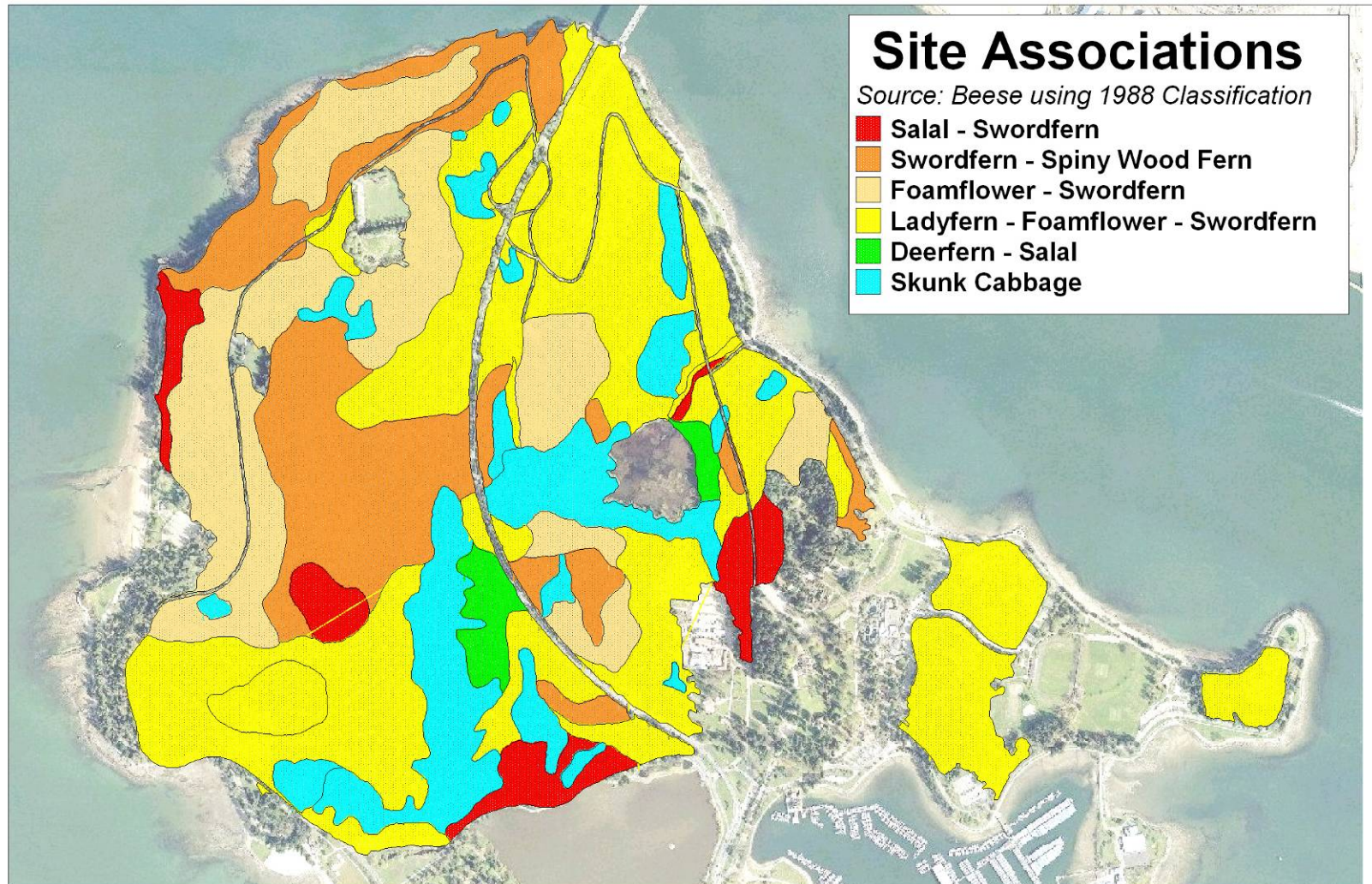
Longer Term Outcomes

- **Implementing a Forest Management Plan**
- **Creating a ‘Stanley Park Atlas’**
- **Posting info on City’s VanMap website**

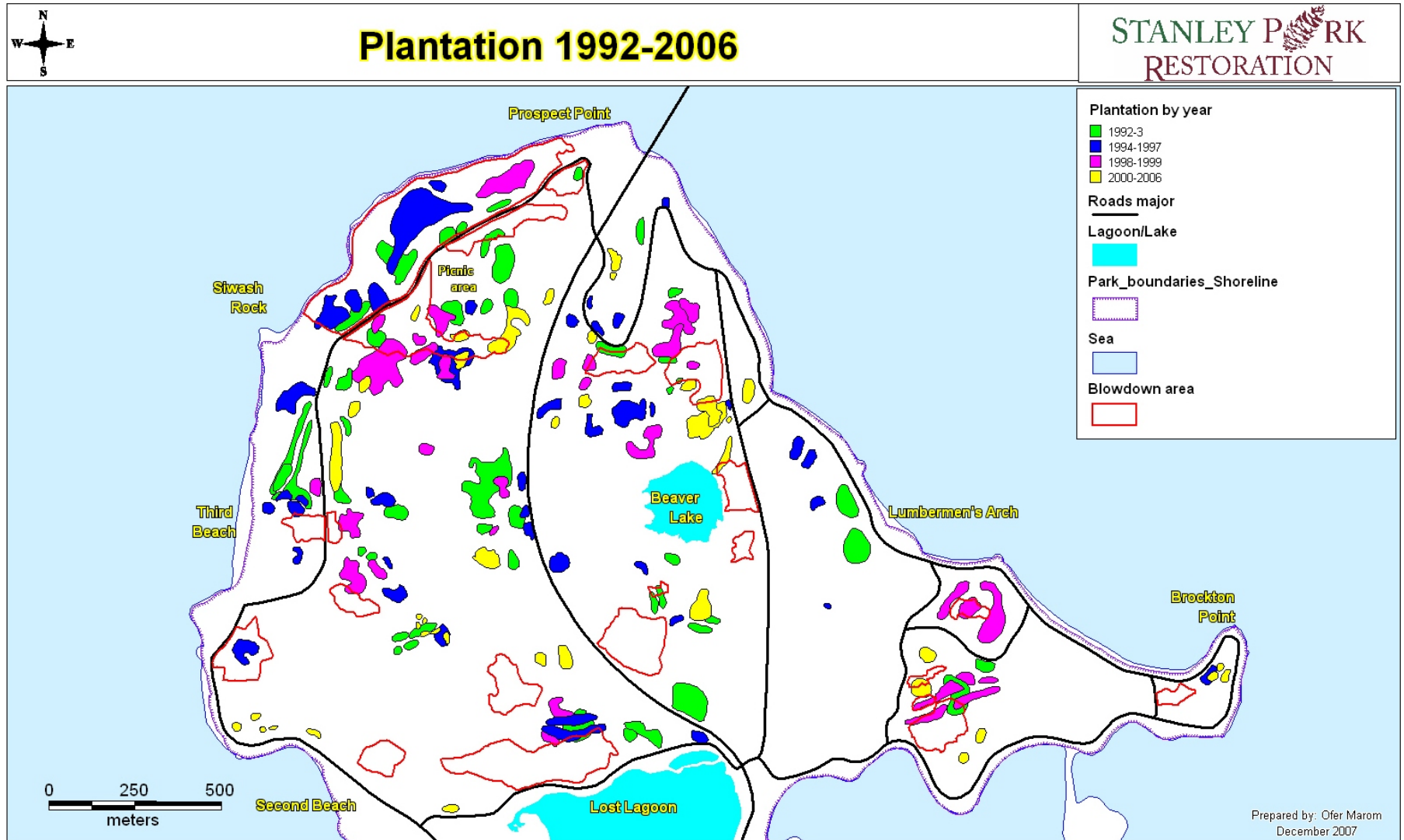
Forest Management Plan

- **Plan being prepared during summer / fall**
- **20 year time frame**
- **In collaboration with UBC Forestry**

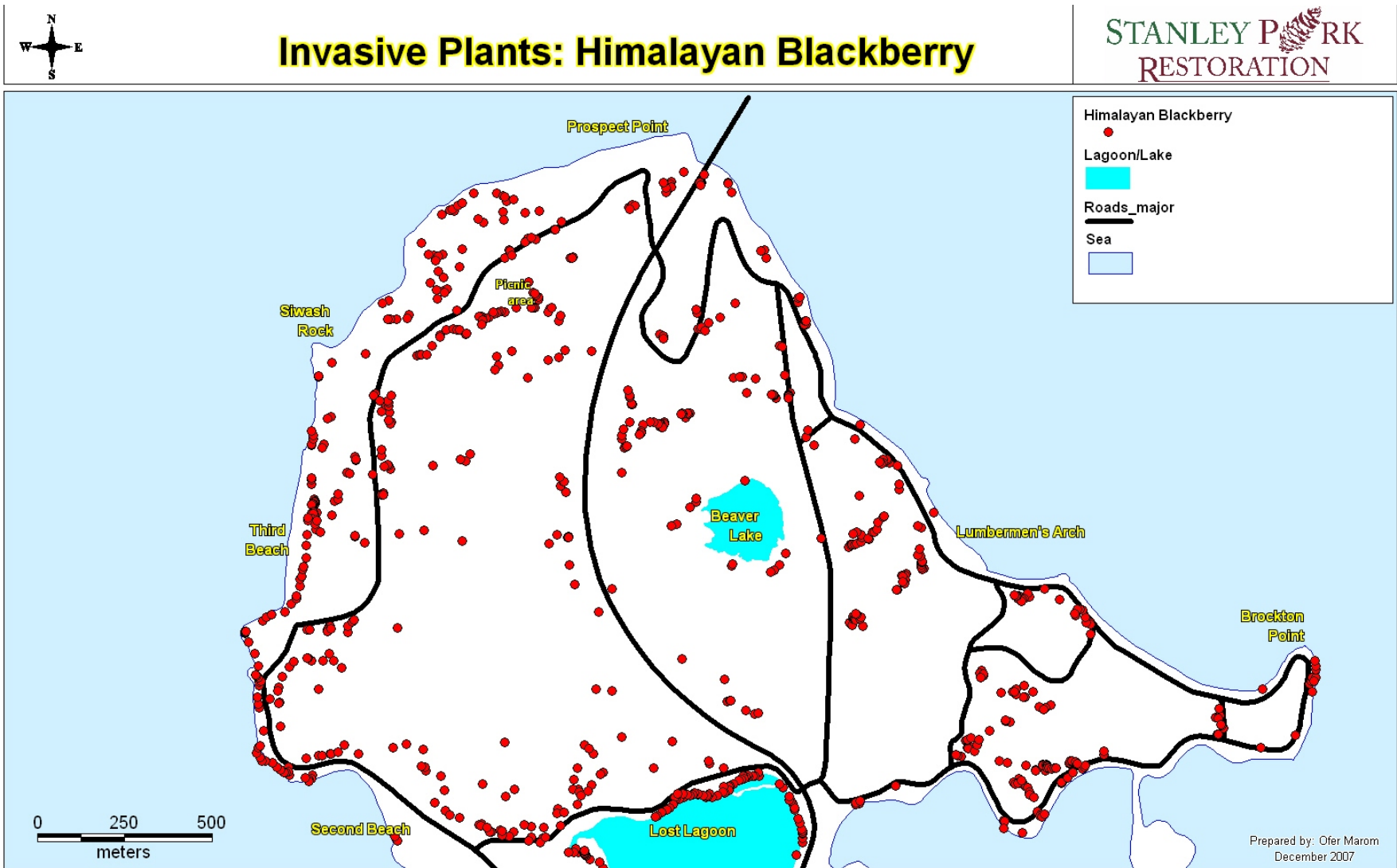
Forest Management Plan



Forest Management Plan



Forest Management Plan

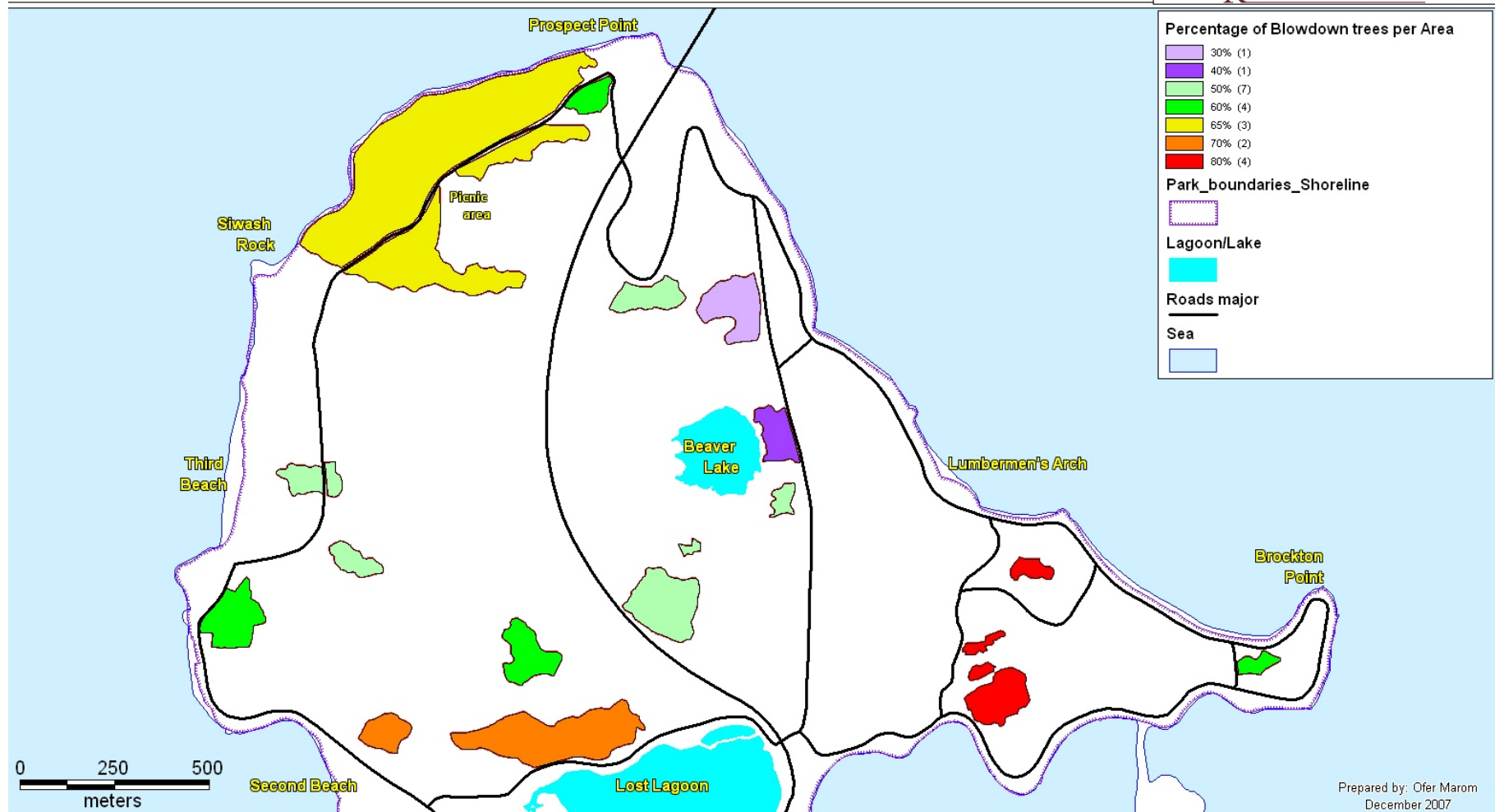


Stanley Park Atlas

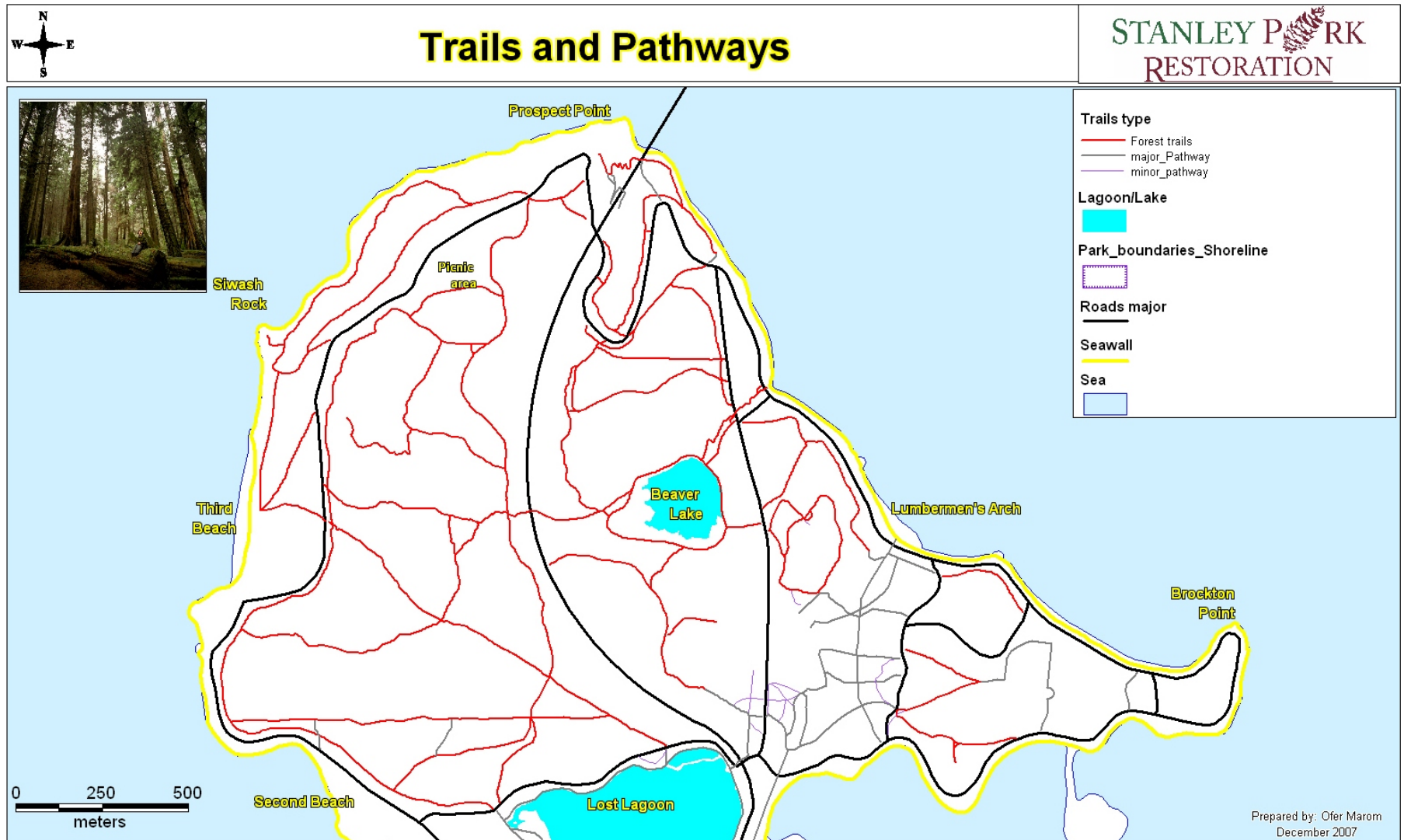


Percentage of Blowdown Trees (Evaluation)

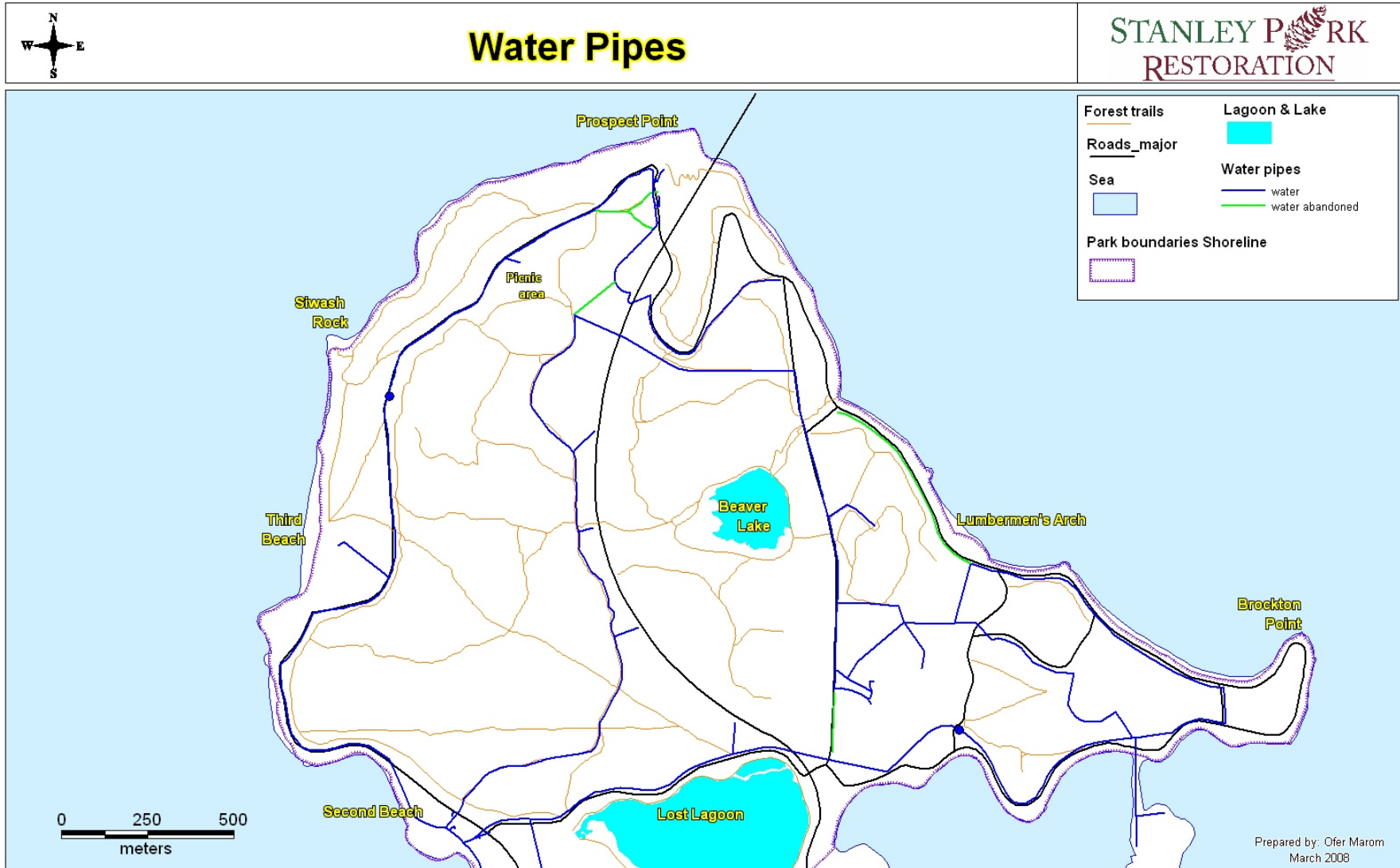
STANLEY PARK
RESTORATION



Stanley Park Atlas



Stanley Park Atlas



Shortcomings

- **Did not develop robust GIS architecture**
- **Collected insufficient attribute data**
- **Digitized insufficient historical data**
- **Did not use GIS as powerful analytical tool**

What we did right

- **Used GIS for first time for major project**
- **Did not overshoot**
- **Used maps as important communication tool**
- **Collected all geo-coded data from consultants**



Welcome to

Stanley Park