

# *Applications without Developers: The GeoBC Mash-up Wizard*

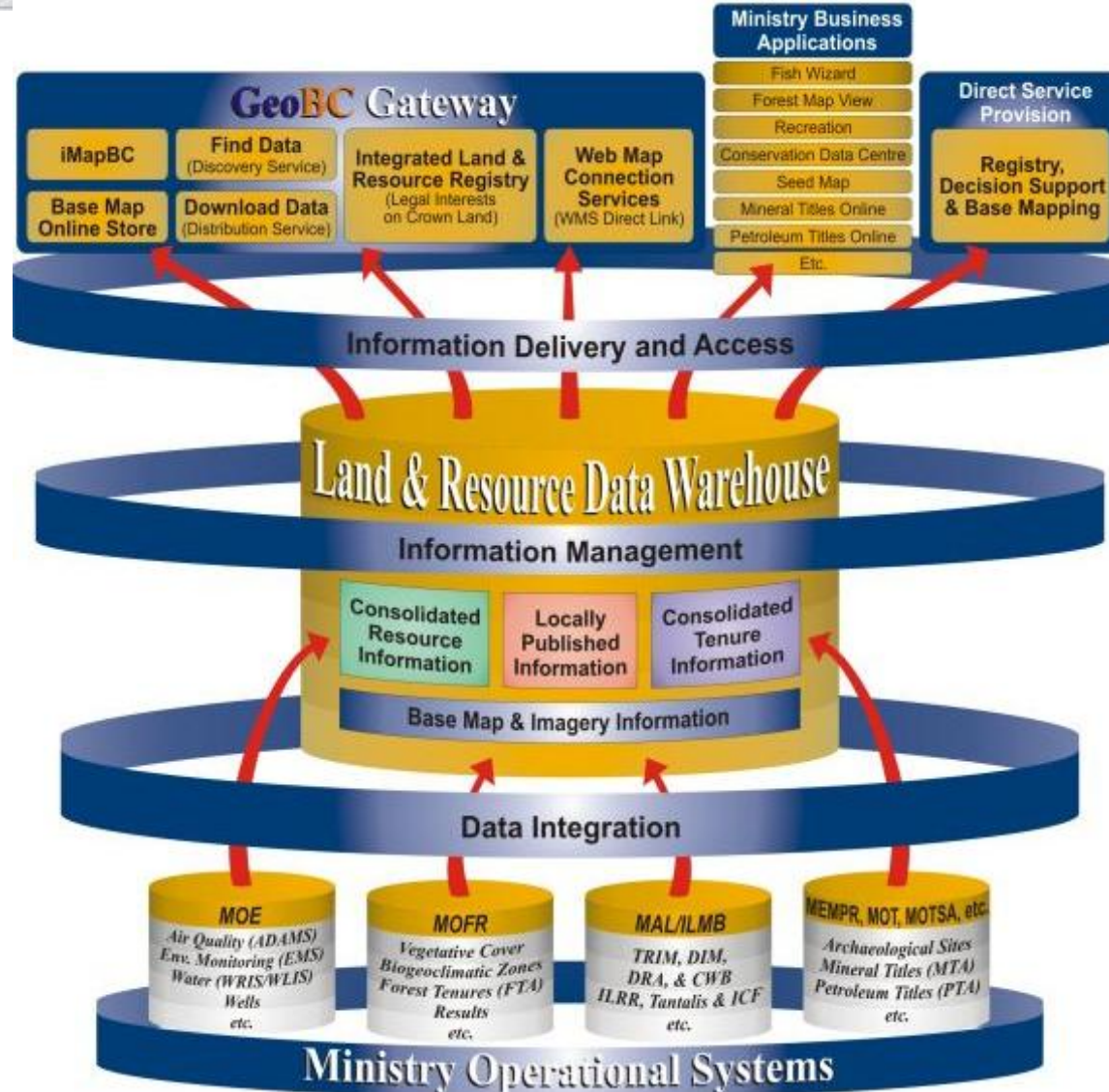
Chris Spicer, GeoBC

October 29<sup>th</sup>, 2009

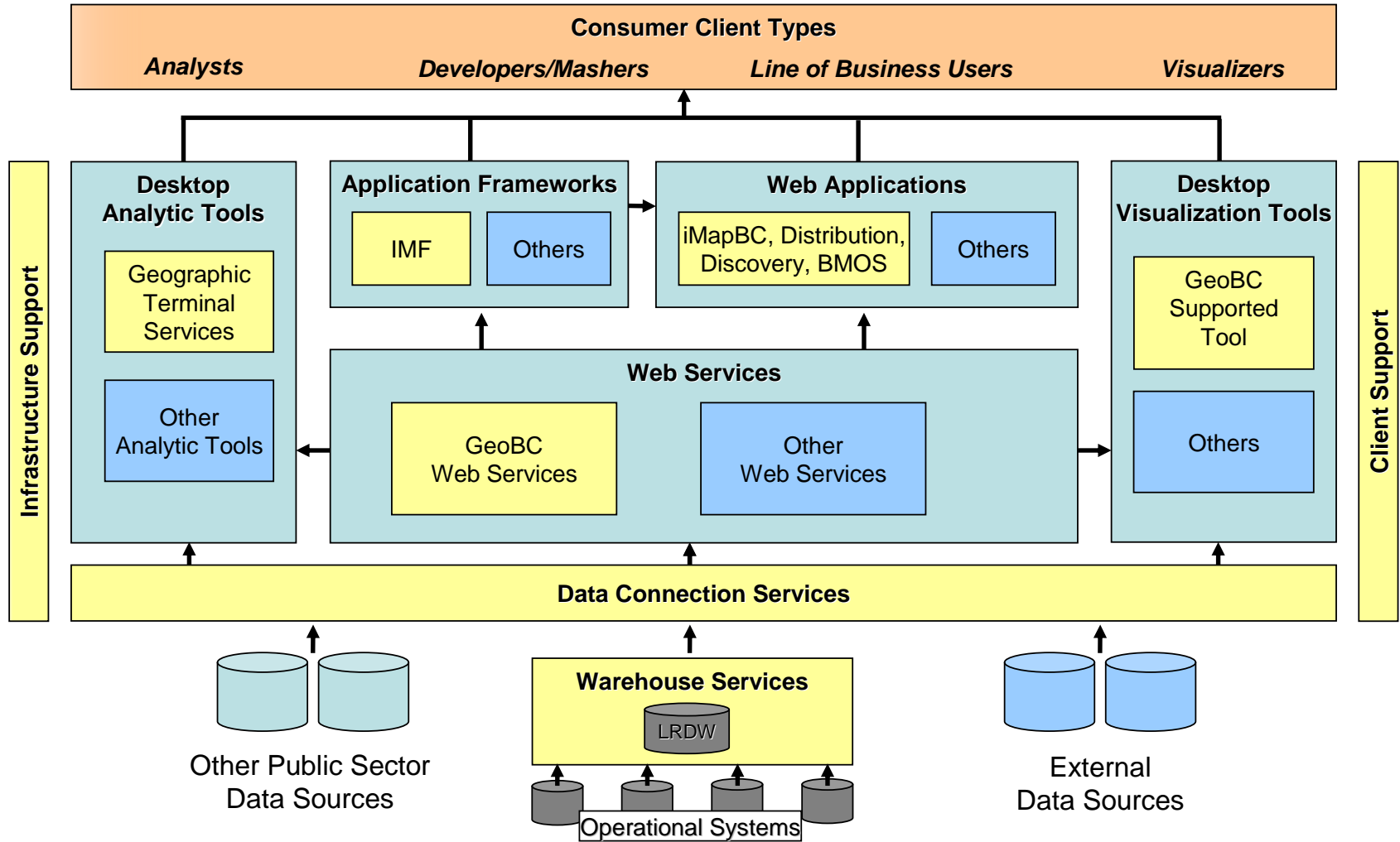
- ⇒ GeoBC overview
- ⇒ Business success - existing frameworks
- ⇒ Rise of light weight viewers
- ⇒ A new framework with a twist - the online application wizard
- ⇒ Next steps
- ⇒ Live demonstration

- ⇒ Enables the role of geography in serving government, business and the citizens of British Columbia across all government sectors
- ⇒ Integrates provincial information, tools, products, and services through a single window - the GeoBC Gateway ([geobc.gov.bc.ca](http://geobc.gov.bc.ca)).

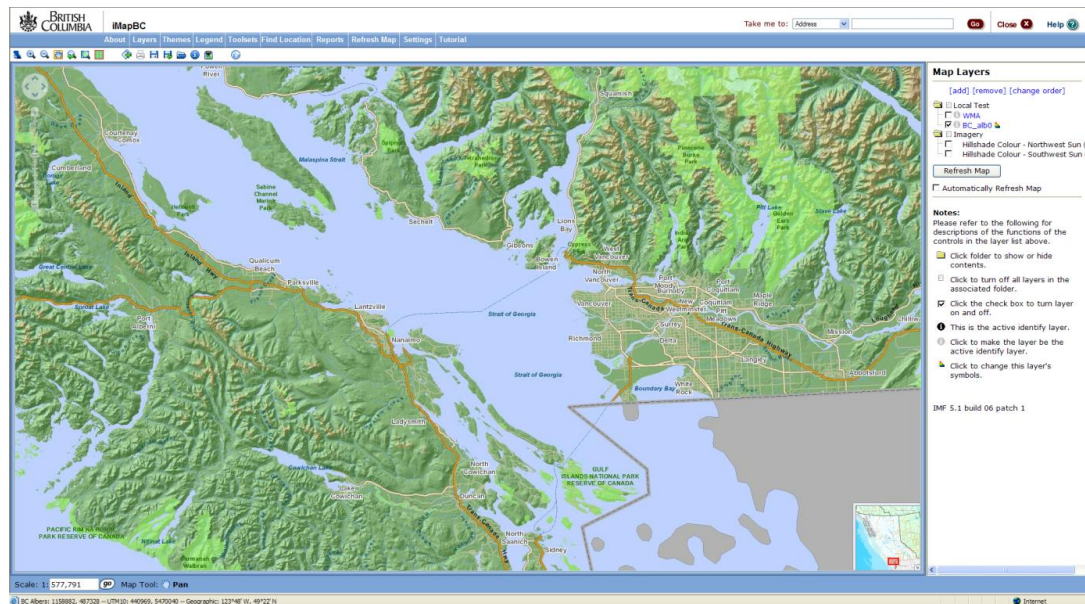




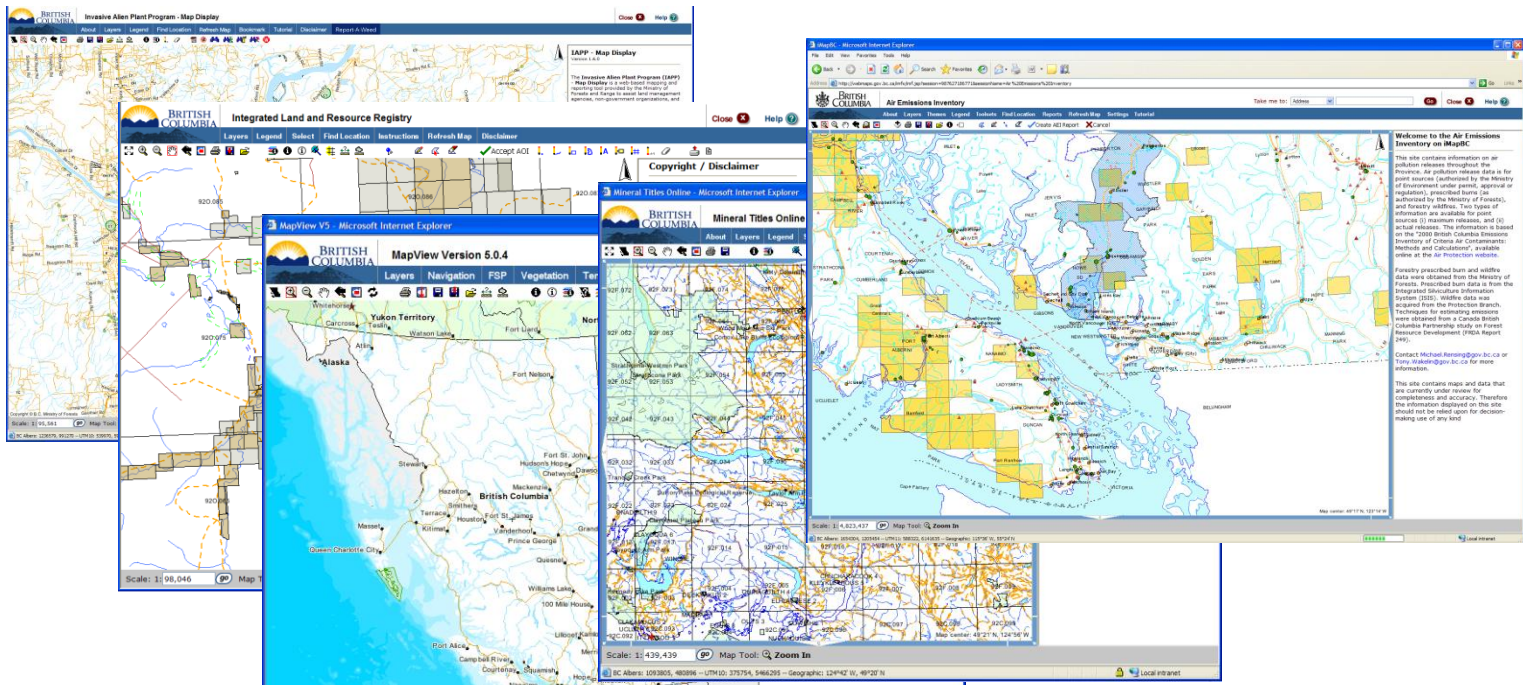




- ⇒ Developed over 8 years ago
- ⇒ Java toolkit containing dozens of tools
- ⇒ Applications developed based on XML configuration
- ⇒ User definable applications through session modification

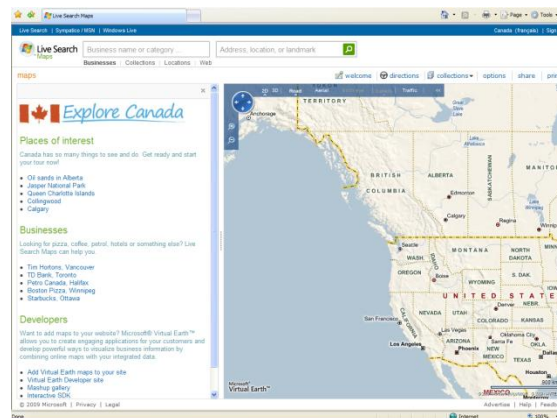
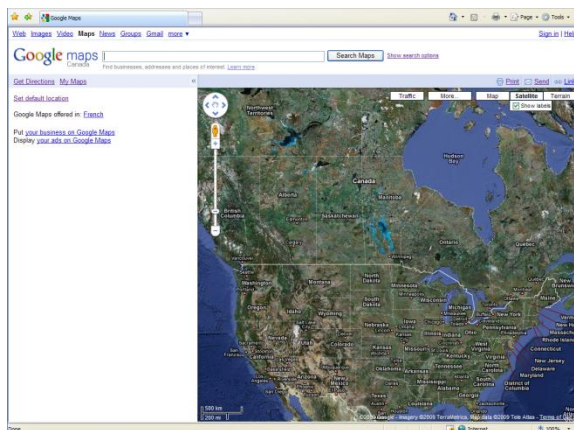


- ⇒ Over 50 applications and 31 themes built
- ⇒ Recently upgraded to include the use of tile caches
- ⇒ Re-usable components, common look and feel and reduction of development costs its core business value

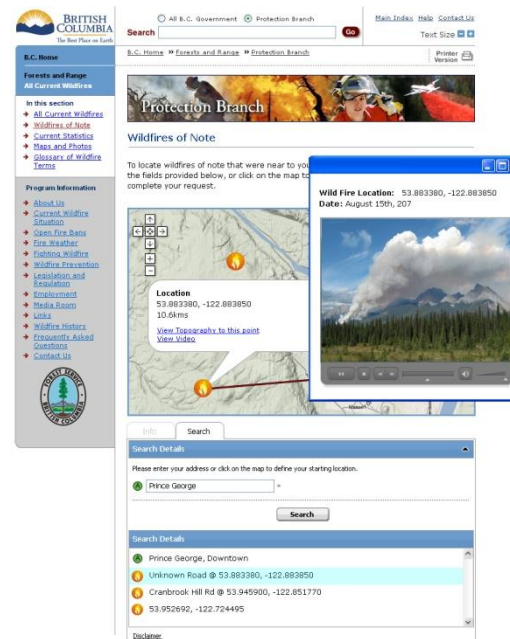
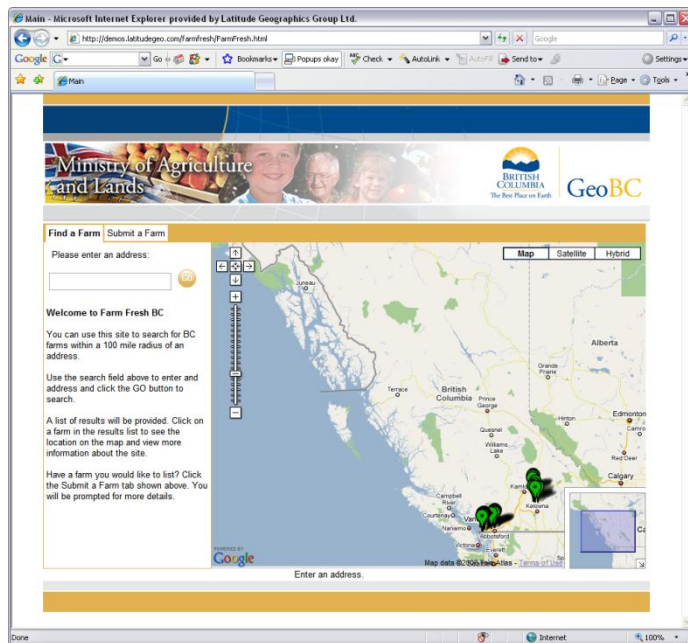




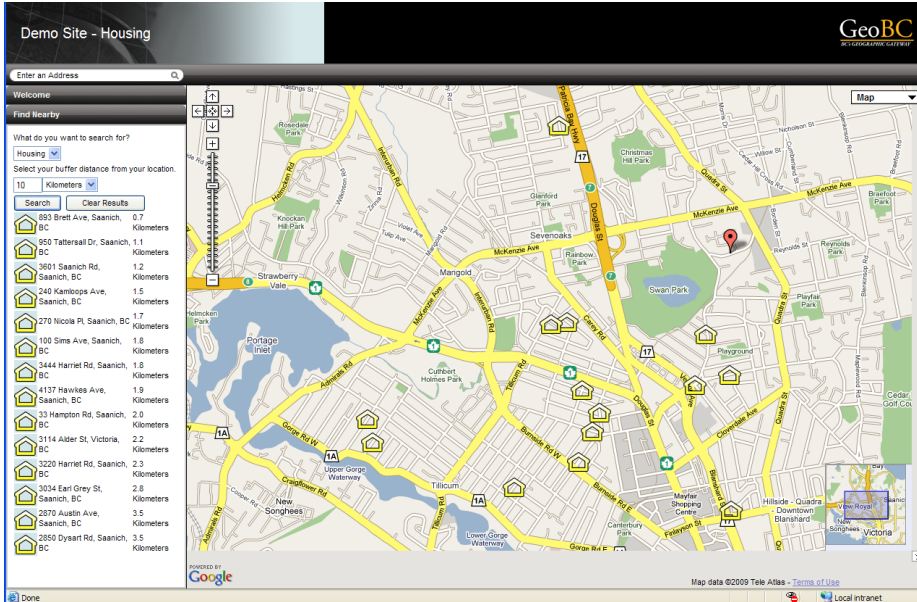
- ⇒ Consumer level web mapping applications have taken off, from hotel booking sites, multiple listing services and smart phones, simple viewers are everywhere
- ⇒ Demand increasing from both public consumers and internal agencies for more light weight, user consumable applications with zero training time



- ⇒ Initial development showed the potential of using a framework to leverage this new growth area
- ⇒ Reduction of cost, increase speed of deployment and availability of authoritative content key



- ⇒ Learning from the Internet Mapping Framework experience, less is more
- ⇒ Remove the 'GIS' from the application

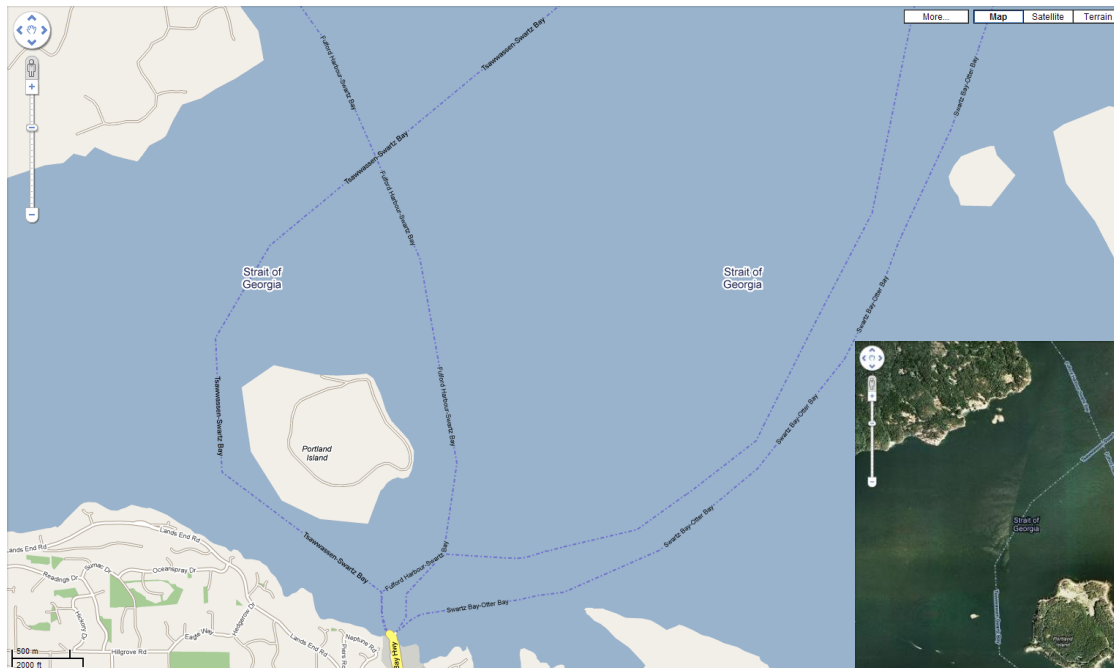


The screenshot displays a web application interface for housing search. The main map shows a residential area in Saanich, BC, with several house icons indicating nearby properties. A search panel on the left lists the following results:

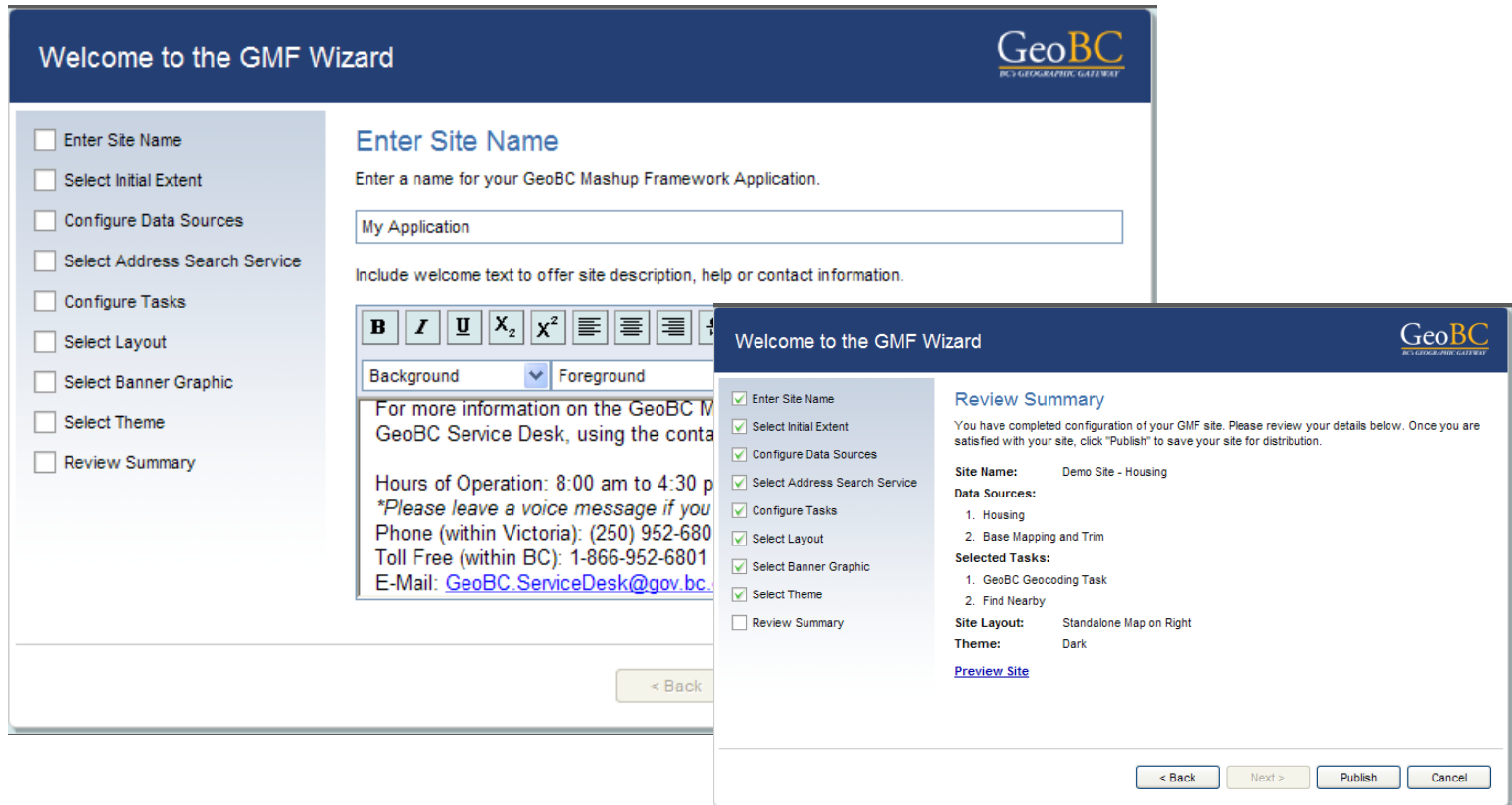
Address	Distance (Kilometers)
893 Brett Ave, Saanich, BC	0.7
950 Tattersall Dr, Saanich, BC	1.1
3601 Saanich Rd, Saanich, BC	1.2
240 Kamloops Ave, Saanich, BC	1.5
270 Nicola Pl, Saanich, BC	1.7
100 Sims Ave, Saanich, BC	1.8
3444 Harriet Rd, Saanich, BC	1.8
4137 Hawkes Ave, Saanich, BC	1.9
33 Hampton Rd, Saanich, BC	2.0
3114 Alder St, Victoria, BC	2.2
3220 Harriet Rd, Saanich, BC	2.3
3034 Earl Grey St, Saanich, BC	2.8
2870 Austin Ave, Saanich, BC	3.5
2850 Dysart Rd, Saanich, BC	3.5

The interface includes a search bar, a 'Find Nearby' section, and a 'Map' button. The map data is attributed to Google, and the page is powered by GeoBC.

⇒ Tapping into the power of web services and authoritative content



- ⇒ Includes an online application creation wizard to author and publish applications



The screenshot displays the 'Welcome to the GMF Wizard' interface. The main window is titled 'Enter Site Name' and contains a text input field with the value 'My Application'. Below the input field is a rich text editor with a toolbar and a text area containing contact information for the GeoBC Service Desk. A sidebar on the left lists configuration steps, with 'Enter Site Name' selected. A 'Review Summary' dialog is overlaid on the right, showing a checklist of completed steps and a list of site details including Site Name, Data Sources, Selected Tasks, Site Layout, and Theme. Navigation buttons for '< Back', '> Next', 'Publish', and 'Cancel' are visible at the bottom.

Welcome to the GMF Wizard

GeoBC  
BC's GEOGRAPHIC GATEWAY

Enter Site Name  
 Select Initial Extent  
 Configure Data Sources  
 Select Address Search Service  
 Configure Tasks  
 Select Layout  
 Select Banner Graphic  
 Select Theme  
 Review Summary

### Enter Site Name

Enter a name for your GeoBC Mashup Framework Application.

My Application

Include welcome text to offer site description, help or contact information.

**B** *I* U  $X_2$   $X^2$  [List Icons]

Background [v] Foreground

For more information on the GeoBC Mashup Framework, please contact the GeoBC Service Desk, using the contact information below.

Hours of Operation: 8:00 am to 4:30 pm  
*\*Please leave a voice message if you are calling after hours.*  
Phone (within Victoria): (250) 952-6800  
Toll Free (within BC): 1-866-952-6801  
E-Mail: [GeoBC.ServiceDesk@gov.bc.ca](mailto:GeoBC.ServiceDesk@gov.bc.ca)

< Back

Welcome to the GMF Wizard

GeoBC  
BC's GEOGRAPHIC GATEWAY

Enter Site Name  
 Select Initial Extent  
 Configure Data Sources  
 Select Address Search Service  
 Configure Tasks  
 Select Layout  
 Select Banner Graphic  
 Select Theme  
 Review Summary

### Review Summary

You have completed configuration of your GMF site. Please review your details below. Once you are satisfied with your site, click "Publish" to save your site for distribution.

**Site Name:** Demo Site - Housing

**Data Sources:**

- Housing
- Base Mapping and Trim

**Selected Tasks:**

- GeoBC Geocoding Task
- Find Nearby

**Site Layout:** Standalone Map on Right

**Theme:** Dark

[Preview Site](#)

< Back > Next > Publish Cancel

- ⇒ Tie the GeoBC cached base map into the GMF to provide an authoritative base
- ⇒ Integrating more content and tools through web services into the framework
- ⇒ Stream the new base through WMS as a public service



# *Live Demo*

Internet Providing....

## GeoBC Website

<http://www.geobc.gov.bc.ca>

or Google “GeoBC”



# *Back-up Slides*

Internet must be down...



## Welcome to the GeoBC Mashup Framework

The GeoBC Mashup Framework (GMF) uses Google technology to allow you to easily develop and quickly deploy mapping sites, which are specific to your business needs.

To build your own site, choose "Create New Site". The GMF will step you through a configuration wizard. Please note that at any time during the creation process you can choose "Finish" to advance you to the end of the wizard, where you can publish your site for distribution.

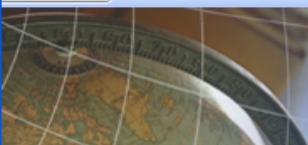
Choose "My Sites" To "View", "Edit" or "Delete" any of the GMF sites that you have published. Alternately, you can also view all current GMF sites that are publicly available.

Create New Site

My GeoBC Sites

All Sites

Site Name	Actions
Chris's Super Site	<a href="#">View</a>   <a href="#">Edit</a>   <a href="#">Delete</a>
Demo Site - Housing	<a href="#">View</a>   <a href="#">Edit</a>   <a href="#">Delete</a>
Dwellings	<a href="#">View</a>   <a href="#">Edit</a>   <a href="#">Delete</a>
Enter Site Name	<a href="#">View</a>   <a href="#">Edit</a>   <a href="#">Delete</a>
Friday Test	<a href="#">View</a>   <a href="#">Edit</a>   <a href="#">Delete</a>
Per's Fav Pubs	<a href="#">View</a>   <a href="#">Edit</a>   <a href="#">Delete</a>
me	<a href="#">View</a>   <a href="#">Edit</a>   <a href="#">Delete</a>



## Welcome to the GeoBC Mashup Framework

The GeoBC Mashup Framework (GMF) uses Google technology to allow you to easily develop and quickly deploy mapping sites, which are specific to your business needs.

To build your own site, choose "Create New Site". The GMF will step you through a configuration wizard. Please note that at any time during the creation process you can choose "Finish" to advance you to the end of the wizard, where you can publish your site for distribution.

Choose "My Sites" To "View", "Edit" or "Delete" any of the GMF sites that you have published. Alternately, you can also view all current GMF sites that are publicly available.




Site Name	Site Author	Actions
2010 Olympics	Singh, Gurdeep ILMB:EX	<a href="#">View</a>
Blank Site	Lanktree, Terry ILMB:EX	<a href="#">View</a>
Brett's Test Site	Siemens, Jeffrey TRAN:EX	<a href="#">View</a>
Carol Demo	Lanktree, Terry ILMB:EX	<a href="#">View</a>
Chris Test Site	Siemens, Jeffrey TRAN:EX	<a href="#">View</a>
Chris's Super Site	Spicer, Chris ILMB:EX	<a href="#">View</a>   <a href="#">Edit</a>   <a href="#">Delete</a>
Demo 43	Blair, Tammy ILMB:EX	<a href="#">View</a>
Demo Site - Housing	Spicer, Chris ILMB:EX	<a href="#">View</a>   <a href="#">Edit</a>   <a href="#">Delete</a>
Dwellings	Spicer, Chris ILMB:EX	<a href="#">View</a>   <a href="#">Edit</a>   <a href="#">Delete</a>
Dwellings	Blair, Tammy ILMB:EX	<a href="#">View</a>
Enter Site Name	Madelung, Fraser T ILMB:EX	<a href="#">View</a>
Enter Site Name	Madelung, Fraser T ILMB:EX	<a href="#">View</a>
Enter Site Name	Spicer, Chris ILMB:EX	<a href="#">View</a>   <a href="#">Edit</a>   <a href="#">Delete</a>
FTM Test 55555	Madelung, Fraser T ILMB:EX	<a href="#">View</a>
Friday Test	Spicer, Chris ILMB:EX	<a href="#">View</a>   <a href="#">Edit</a>   <a href="#">Delete</a>
Hazardous Waste sites - Lower Mainland Region - Ministry of Environment	Mordy, Susan V ILMB:EX	<a href="#">View</a>
Ivana Test	Mazuch, Ivana TRAN:EX	<a href="#">View</a>
Jeff's test site	Siemens, Jeffrey TRAN:EX	<a href="#">View</a>
Josh's Test Site - GeoBC Google Mashup Framework	Chan, Joshua H ILMB:EX	<a href="#">View</a>
Kevin's Map	Metcalfe, Kevin ILMB:EX	<a href="#">View</a>
Nicole and Peter's Wedding	de Greef, Nicole ILMB:EX	<a href="#">View</a>

## Welcome to the GeoBC Mashup Framework

The GeoBC Mashup Framework (GMF) uses Google technology to allow you to easily develop and quickly deploy mapping sites, which are specific to your business needs.

To build your own site, choose "Create New Site" to the end of the wizard, where you can choose "My Sites" to "View", "Edit", "Add", "Delete", "Share" or "Share" to "Share".

choose "Finish" to advance you to the next step.

Choose "My Sites" To "View", "Edit", "Add", "Delete", "Share" or "Share" to "Share".

Create New Site

My GeoBC Sites | All Sites

Site Name
2010 Olympics
Blank Site
Brett's Test Site
Carol Demo
Chris Test Site
Chris's Super Site
Demo 43
Demo Site - Housing
Dwellings
Dwellings
Enter Site Name
Enter Site Name
Enter Site Name
FTM Test 55555
Friday Test
Hazardous Waste sites - Lower Mainland Region - Ministry of Environment
Ivana Test
Jeff's test site
Josh's Test Site - GeoBC Google Mashup Framework
Kevin's Map
Nicole and Peter's Wedding

Welcome to the GMF Wizard

- Enter Site Name
- Select Initial Extent
- Configure Data Sources
- Select Address Search Service
- Configure Tasks
- Select Layout
- Select Banner Graphic
- Select Theme
- Review Summary

### Enter Site Name

Enter a name for your GeoBC Mashup Framework Application.

Include welcome text to offer site description, help or contact information.

B I U X<sub>2</sub> X<sup>2</sup>



## Welcome to the GeoBC Mashup Framework

The GeoBC Mashup Framework (GMF) uses Google technology to allow you to easily develop and quickly deploy mapping sites, which are specific to your business needs.

To build your own site, choose "Create New Site" to the end of the wizard, where you can choose "Finish" to advance you

Choose "My Sites" To "View", "Edit" or "Delete" a site.

Create New Site

My GeoBC Sites All Sites

## Site Name

2010 Olympics

Blank Site

Brett's Test Site

Carol Demo

Chris Test Site

Chris's Super Site

Demo 43

Demo Site - Housing

Dwellings

Dwellings

Enter Site Name

Enter Site Name

Enter Site Name

FTM Test 55555

Friday Test

Hazardous Waste sites - Lower Mainland Region - Ministry of Environment

Ivana Test

Jeff's test site

Josh's Test Site - GeoBC Google Mashup Framework

Kevin's Map

Nicole and Peter's Wedding

Madelung, Fraser T ILMB:EX

Spicer, Chris ILMB:EX

Mordy, Susan V ILMB:EX

Mazuch, Ivana TRAN:EX

Siemens, Jeffrey TRAN:EX

Chan, Joshua H ILMB:EX

Metcalfe, Kevin ILMB:EX

de Greef, Nicole ILMB:EX

ions

W

W

W

W

W

W

W

W

W

W

W

W

W

W

W

W

W

W

W

W

W

## Welcome to the GMF Wizard

- Enter Site Name
- Select Initial Extent
- Configure Data Sources
- Select Address Search Service
- Configure Tasks
- Select Layout
- Select Banner Graphic
- Select Theme
- Review Summary

## Enter Site Name

Enter a name for your GeoBC Mashup Framework Application.

Low Income Housing - Victoria (Demo)

Include welcome text to offer site description, help or contact information.

**B**  *I*  U   $x_2$    $x^2$

Background  Foreground  Font  Size

Demo site for Geotec 2009 - Vancouver.

Site shows low income housing locations for Victoria. Try using the Find Nearby too, or the Search by Category tool by clicking on the tabs at the bottom of this window. Click on a house icon to get more detail.

< Back

Next >

Finish

Cancel

# Welcome to the GeoBC Mashup Framework

The GeoBC Mashup Framework (GMF) uses Google technology to allow you to easily develop and quickly deploy mapping sites, which are specific to your business needs.

To build your own site, choose "Create New Site" to the end of the wizard, where you can choose "Finish" to advance you

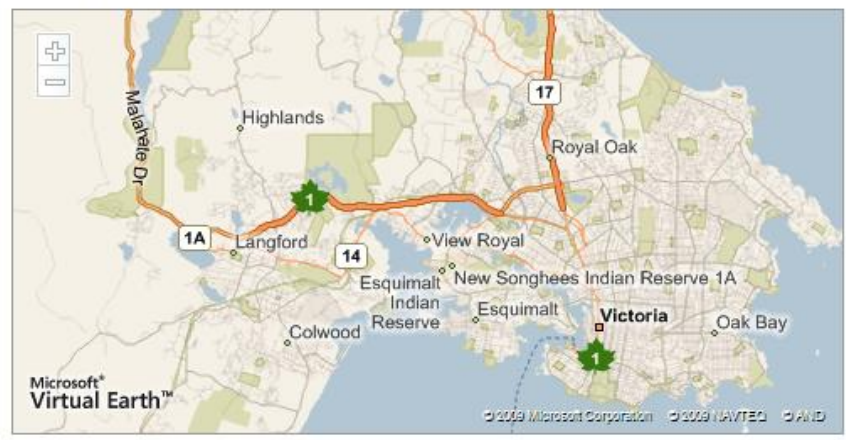
Choose "My Sites" To "View", "Edit", "Delete"

## Welcome to the GMF Wizard

- Enter Site Name
- Select Initial Extent
- Configure Data Sources
- Select Address Search Service
- Configure Tasks
- Select Layout
- Select Banner Graphic
- Select Theme
- Review Summary

### Select Initial Extent

Use the map navigation controls to pan and zoom the map to set the starting extent of your GMF site.



< Back    Next >    Finish    Cancel

Site Name
2010 Olympics
Blank Site
Brett's Test Site
Carol Demo
Chris Test Site
Chris's Super Site
Demo 43
Demo Site - Housing
Dwellings
Dwellings
Enter Site Name
Enter Site Name
Enter Site Name
FTM Test 55555
Friday Test
Hazardous Waste sites - Lower Mainland Region - Ministry of Environment
Ivana Test
Jeff's test site
Josh's Test Site - GeoBC Google Mashup Framework
Kevin's Map
Nicole and Peter's Wedding

Madelung, Fraser T ILMB:EX	<a href="#">View</a>
Spicer, Chris ILMB:EX	<a href="#">View</a>   <a href="#">Edit</a>   <a href="#">Delete</a>
Mordy, Susan V ILMB:EX	<a href="#">View</a>
Mazuch, Ivana TRAN:EX	<a href="#">View</a>
Siemens, Jeffrey TRAN:EX	<a href="#">View</a>
Chan, Joshua H ILMB:EX	<a href="#">View</a>
Metcalfe, Kevin ILMB:EX	<a href="#">View</a>
de Greef, Nicole ILMB:EX	<a href="#">View</a>

## Welcome to the GeoBC Mashup Framework

The GeoBC Mashup Framework (GMF) uses Google technology to allow you to easily develop and quickly deploy mapping sites, which are specific to your business needs.

To build your own site, choose "Create New Site" to the end of the wizard, where you can choose "Finish" to advance you

Choose "My Sites" To "View", "Edit", "Delete"

Create New Site

My GeoBC Sites All Sites

Site Name
2010 Olympics
Blank Site
Brett's Test Site
Carol Demo
Chris Test Site
Chris's Super Site
Demo 43
Demo Site - Housing
Dwellings
Dwellings
Enter Site Name
Enter Site Name
Enter Site Name
FTM Test 55555
Friday Test
Hazardous Waste sites - Lower Mainland Region - Ministry of Environment
Ivana Test
Jeff's test site
Josh's Test Site - GeoBC Google Mashup Framework
Kevin's Map
Nicole and Peter's Wedding

Welcome to the GMF Wizard

- Enter Site Name
- Select Initial Extent
- Configure Data Sources
- Select Address Search Service
- Configure Tasks
- Select Layout
- Select Banner Graphic
- Select Theme
- Review Summary

### Configure Data Sources

Select site layers from available WMS data sources or upload your own Shapefile or KML layers.

Administrative Boundaries - Electoral Districts

+ Add From Dropdown
+ Add KML File Layer
+ Add Shapefile Layer

Currently Added/Uploaded Layers

- Remove Selected Layer

< Back
Next >
Finish
Cancel

Madelung, Fraser T ILMB:EX	<a href="#">View</a>
Spicer, Chris ILMB:EX	<a href="#">View</a>   <a href="#">Edit</a>   <a href="#">Delete</a>
Mordy, Susan V ILMB:EX	<a href="#">View</a>
Mazuch, Ivana TRAN:EX	<a href="#">View</a>
Siemens, Jeffrey TRAN:EX	<a href="#">View</a>
Chan, Joshua H ILMB:EX	<a href="#">View</a>
Metcalfe, Kevin ILMB:EX	<a href="#">View</a>
de Greef, Nicole ILMB:EX	<a href="#">View</a>

## Welcome to the GeoBC Mashup Framework

The GeoBC Mashup Framework (GMF) uses Google technology to allow you to easily develop and quickly deploy mapping sites, which are specific to your business needs.

To build your own site, choose "Create New Site" to the end of the wizard, where you can choose "My Sites" to "View", "Edit" or "Delete".

choose "Finish" to advance you to the next step.

Welcome to the GMF Wizard

- Enter Site Name
- Select Initial Extent
- Configure Data Sources
- Select Address Search Service
- Configure Tasks
- Select Layout
- Select Banner Graphic
- Select Theme
- Review Summary

### Upload KML Data Source

Select a \*.kml file to upload and give your uploaded layer a name.

Enter the location of your \*.kml file.

Enter the name of your layer.

Site Name
2010 Olympics
Blank Site
Brett's Test Site
Carol Demo
Chris Test Site
Chris's Super Site
Demo 43
Demo Site - Housing
Dwellings
Dwellings
Enter Site Name
Enter Site Name
Enter Site Name
FTM Test 55555
Friday Test
Hazardous Waste sites - Lower Mainland Region - Ministry of Environment
Ivana Test
Jeff's test site
Josh's Test Site - GeoBC Google Mashup Framework
Kevin's Map
Nicole and Peter's Wedding

Choose file
?
X

Look in: Housing

- Recent
- Desktop
- My Documents
- My Computer N0036680
- My Network Places

<ul style="list-style-type: none"> <li> banner.GIF</li> <li> house.jpg</li> <li style="background-color: #e0e0e0;"> single_family_dwelling.kml</li> </ul>
---

File name: single\_family\_dwelling.kml

Files of type: All Files (\*.\*)

Metcalfe, Kevin ILMB:EX	<a href="#">View</a>
de Greef, Nicole ILMB:EX	<a href="#">View</a>



# Welcome to the GeoBC Mashup Framework

The GeoBC Mashup Framework (GMF) uses Google technology to allow you to easily develop and quickly deploy mapping sites, which are specific to your business needs.

To build your own site, choose "Create New Site" to the end of the wizard, where you can choose "Finish" to advance you

Choose "My Sites" To "View", "Edit", "Delete"

Create New Site

My GeoBC Sites All Sites

Site Name
2010 Olympics
Blank Site
Brett's Test Site
Carol Demo
Chris Test Site
Chris's Super Site
Demo 43
Demo Site - Housing
Dwellings
Dwellings
Enter Site Name
Enter Site Name
Enter Site Name
FTM Test 55555
Friday Test
Hazardous Waste sites - Lower Mainland Region - Ministry of Environment
Ivana Test
Jeff's test site
Josh's Test Site - GeoBC Google Mashup Framework
Kevin's Map
Nicole and Peter's Wedding

Welcome to the GMF Wizard

- Enter Site Name
- Select Initial Extent
- Configure Data Sources
- Select Address Search Service
- Configure Tasks
- Select Layout
- Select Banner Graphic
- Select Theme
- Review Summary

### Set Symbology on Uploaded Layer

Define symbolization for your uploaded layer.

Use Default Symbolization

Upload your own icon.



## Welcome to the GeoBC Mashup Framework

The GeoBC Mashup Framework (GMF) uses Google technology to allow you to easily develop and quickly deploy mapping sites, which are specific to your business needs.

To build your own site, choose "Create New Site" to the end of the wizard, where you can choose "My Sites" to "View", "Edit", or "Delete".

choose "Finish" to advance you to the next step.

### Welcome to the GMF Wizard

- Enter Site Name
- Select Initial Extent
- Configure Data Sources
- Select Address Search Service
- Configure Tasks
- Select Layout
- Select Banner Graphic
- Select Theme
- Review Summary

### Configure Tasks

Tasks can be used to enrich your site by offering users new functionality such as Search by Category. Add tasks to your GeoBC Mashup Framework site using the Add button below. It is important to note, however, that some tasks require you to configure them to work with your data; the wizard will guide you through this process.



#### Currently Added Tasks







Site Name	My GeoBC Sites	All Sites
2010 Olympics		
Blank Site		
Brett's Test Site		
Carol Demo		
Chris Test Site		
Chris's Super Site		
Demo 43		
Demo Site - Housing		
Dwellings		
Dwellings		
Enter Site Name		
Enter Site Name		
Enter Site Name		
FTM Test 55555		
Friday Test		
Hazardous Waste sites - Lower Mainland Region - Ministry of Environment		
Ivana Test		
Jeff's test site		
Josh's Test Site - GeoBC Google Mashup Framework		
Kevin's Map		
Nicole and Peter's Wedding		

Madelung, Fraser T ILMB:EX
Spicer, Chris ILMB:EX
Mordy, Susan V ILMB:EX
Mazuch, Ivana TRAN:EX
Siemens, Jeffrey TRAN:EX
Chan, Joshua H ILMB:EX
Metcalfe, Kevin ILMB:EX
de Greef, Nicole ILMB:EX

[View](#)
[View](#) | [Edit](#) | [Delete](#)
[View](#)
[View](#)
[View](#)
[View](#)
[View](#)
[View](#)



## Welcome to the GeoBC Mashup Framework

The GeoBC Mashup Framework (GMF) uses Google technology to allow you to easily develop and quickly deploy mapping sites, which are specific to your business needs.

To build your own site, choose "Create New Site" to the end of the wizard, where you can choose "My Sites" To "View", "Edit", or "Delete".

Choose "My Sites" To "View", "Edit", or "Delete".

Create New Site

My GeoBC Sites All Sites

### Site Name

2010 Olympics  
Blank Site  
Brett's Test Site  
Carol Demo  
Chris Test Site  
Chris's Super Site  
Demo 43  
Demo Site - Housing  
Dwellings  
Dwellings  
Enter Site Name  
Enter Site Name  
Enter Site Name  
FTM Test 55555  
Friday Test  
Hazardous Waste sites - Lower Mainland Region - Ministry of Environment  
Ivana Test  
Jeff's test site  
Josh's Test Site - GeoBC Google Mashup Framework  
Kevin's Map  
Nicole and Peter's Wedding

## Welcome to the GMF Wizard

- Enter Site Name
- Select Initial Extent
- Configure Data Sources
- Select Address Search Service
- Configure Tasks
- Select Layout
- Select Banner Graphic
- Select Theme
- Review Summary

### Configure Find Nearby Tool

This tool allows users to find features located near a user-defined point. Select which of your layers the user will be able to search against.

Housing



< Back

Next >

Finish

Cancel

Madelung, Fraser T ILMB:EX

Spicer, Chris ILMB:EX

Mordy, Susan V ILMB:EX

Mazuch, Ivana TRAN:EX

Siemens, Jeffrey TRAN:EX

Chan, Joshua H ILMB:EX

Metcalfe, Kevin ILMB:EX

de Greef, Nicole ILMB:EX

[View](#)

[View](#) | [Edit](#) | [Delete](#)

[View](#)

[View](#)

[View](#)

[View](#)

[View](#)

[View](#)

# Welcome to the GeoBC Mashup Framework

The GeoBC Mashup Framework (GMF) uses Google technology to allow you to easily develop and quickly deploy mapping sites, which are specific to your business needs.

To build your own site, choose "Create New Site" to the end of the wizard, where you can choose "My Sites" to "View", "Edit" or "Delete".

choose "Finish" to advance you to the next step.

Choose "My Sites" To "View", "Edit" or "Delete".

Create New Site

My GeoBC Sites All Sites

Site Name
2010 Olympics
Blank Site
Brett's Test Site
Carol Demo
Chris Test Site
Chris's Super Site
Demo 43
Demo Site - Housing
Dwellings
Dwellings
Enter Site Name
Enter Site Name
Enter Site Name
FTM Test 55555
Friday Test
Hazardous Waste sites - Lower Mainland Region - Ministry of Environment
Ivana Test
Jeff's test site
Josh's Test Site - GeoBC Google Mashup Framework
Kevin's Map
Nicole and Peter's Wedding

Welcome to the GMF Wizard

- Enter Site Name
- Select Initial Extent
- Configure Data Sources
- Select Address Search Service
- Configure Tasks
- Select Layout
- Select Banner Graphic
- Select Theme
- Review Summary

### Configure Search by Category Tool

Select which of your uploaded layers the user will be able to search by category or filter against.

Housing

For each layer, select which fields the user will be able to filter against.

Name

Madelung, Fraser T ILMB:EX	<a href="#">View</a>
Spicer, Chris ILMB:EX	<a href="#">View</a>   <a href="#">Edit</a>   <a href="#">Delete</a>
Mordy, Susan V ILMB:EX	<a href="#">View</a>
Mazuch, Ivana TRAN:EX	<a href="#">View</a>
Siemens, Jeffrey TRAN:EX	<a href="#">View</a>
Chan, Joshua H ILMB:EX	<a href="#">View</a>
Metcalfe, Kevin ILMB:EX	<a href="#">View</a>
de Greef, Nicole ILMB:EX	<a href="#">View</a>

## Welcome to the GeoBC Mashup Framework

The GeoBC Mashup Framework (GMF) uses Google technology to allow you to easily develop and quickly deploy mapping sites, which are specific to your business needs.

To build your own site, choose "Create New Site" to the end of the wizard, where you can choose "Finish" to advance you

Choose "My Sites" To "View", "Edit" or "Delete" a site.

Create New Site

My GeoBC Sites | All Sites

Site Name
2010 Olympics
Blank Site
Brett's Test Site
Carol Demo
Chris Test Site
Chris's Super Site
Demo 43
Demo Site - Housing
Dwellings
Dwellings
Enter Site Name
Enter Site Name
Enter Site Name
FTM Test 55555
Friday Test
Hazardous Waste sites - Lower Mainland Region - Ministry of Environment
Ivana Test
Jeff's test site
Josh's Test Site - GeoBC Google Mashup Framework
Kevin's Map
Nicole and Peter's Wedding

Welcome to the GMF Wizard

- Enter Site Name
- Select Initial Extent
- Configure Data Sources
- Select Address Search Service
- Configure Tasks
- Select Layout
- Select Banner Graphic
- Select Theme
- Review Summary

### Configure Tasks

Tasks can be used to enrich your site by offering users new functionality such as Search by Category. Add tasks to your GeoBC Mashup Framework site using the Add button below. It is important to note, however, that some tasks require you to configure them to work with your data; the wizard will guide you through this process.

▼
 Search by Category

+ Add to Tasks

**Currently Added Tasks**

- Find Nearby
- Search by Category

- Remove Task
Edit Task

< Back
Next >
Finish
Cancel

## Welcome to the GeoBC Mashup Framework

The GeoBC Mashup Framework (GMF) uses Google technology to allow you to easily develop and quickly deploy mapping sites, which are specific to your business needs.

To build your own site, choose "Create New Site" to the end of the wizard, where you can choose "My Sites" to "View", "Edit", or "Delete".

choose "Finish" to advance you to the next step.

GeoBC  
BC's GEOGRAPHIC GATEWAY

### Welcome to the GMF Wizard

- Enter Site Name
- Select Initial Extent
- Configure Data Sources
- Select Address Search Service
- Configure Tasks
- Select Layout
- Select Banner Graphic
- Select Theme
- Review Summary

### Select Layout

Please select a layout option for your application. Note that if you wish to place this application within an existing website, you will want to choose an embedded layout.

- Standalone Map on Right 
- Standalone Map on Left 
- Embedded Map on Right 
- Embedded Map on Left 

< Back
Next >
Finish
Cancel

Choose "My Sites" to "View", "Edit", or "Delete".

Create New Site

My GeoBC Sites All Sites

Site Name
2010 Olympics
Blank Site
Brett's Test Site
Carol Demo
Chris Test Site
Chris's Super Site
Demo 43
Demo Site - Housing
Dwellings
Dwellings
Enter Site Name
Enter Site Name
Enter Site Name
FTM Test 55555
Friday Test
Hazardous Waste sites - Lower Mainland Region - Ministry of Environment
Ivana Test
Jeff's test site
Josh's Test Site - GeoBC Google Mashup Framework
Kevin's Map
Nicole and Peter's Wedding

Users	Actions
Madelung, Fraser T ILMB:EX	<a href="#">View</a>
Spicer, Chris ILMB:EX	<a href="#">View</a>   <a href="#">Edit</a>   <a href="#">Delete</a>
Mordy, Susan V ILMB:EX	<a href="#">View</a>
Mazuch, Ivana TRAN:EX	<a href="#">View</a>
Siemens, Jeffrey TRAN:EX	<a href="#">View</a>
Chan, Joshua H ILMB:EX	<a href="#">View</a>
Metcalfe, Kevin ILMB:EX	<a href="#">View</a>
de Greef, Nicole ILMB:EX	<a href="#">View</a>





## Welcome to the GeoBC Mashup Framework

The GeoBC Mashup Framework (GMF) uses Google technology to allow you to easily develop and quickly deploy mapping sites, which are specific to your business needs.

To build your own site, choose "Create New Site" to the end of the wizard, where you can choose "My Sites" to "View", "Edit", or "Delete".

choose "Finish" to advance you to the next step.

Welcome to the GMF Wizard

- Enter Site Name
- Select Initial Extent
- Configure Data Sources
- Select Address Search Service
- Configure Tasks
- Select Layout
- Select Banner Graphic
- Select Theme
- Review Summary

### Select Theme

GMF themes are used to define the color scheme. Select a color theme for your site from the drop-down list.

▼
Standard

Standard

Chrome

Dark

Green

< Back
Next >
Finish
Cancel

Choose "My Sites" To "View", "Edit", or "Delete".

Create New Site

My GeoBC Sites All Sites

Site Name
2010 Olympics
Blank Site
Brett's Test Site
Carol Demo
Chris Test Site
Chris's Super Site
Demo 43
Demo Site - Housing
Dwellings
Dwellings
Enter Site Name
Enter Site Name
Enter Site Name
FTM Test 55555
Friday Test
Hazardous Waste sites - Lower Mainland Region - Ministry of Environment
Ivana Test
Jeff's test site
Josh's Test Site - GeoBC Google Mashup Framework
Kevin's Map
Nicole and Peter's Wedding

Madelung, Fraser T ILMB:EX	<a href="#">View</a>
Spicer, Chris ILMB:EX	<a href="#">View</a>   <a href="#">Edit</a>   <a href="#">Delete</a>
Mordy, Susan V ILMB:EX	<a href="#">View</a>
Mazuch, Ivana TRAN:EX	<a href="#">View</a>
Siemens, Jeffrey TRAN:EX	<a href="#">View</a>
Chan, Joshua H ILMB:EX	<a href="#">View</a>
Metcalfe, Kevin ILMB:EX	<a href="#">View</a>
de Greef, Nicole ILMB:EX	<a href="#">View</a>



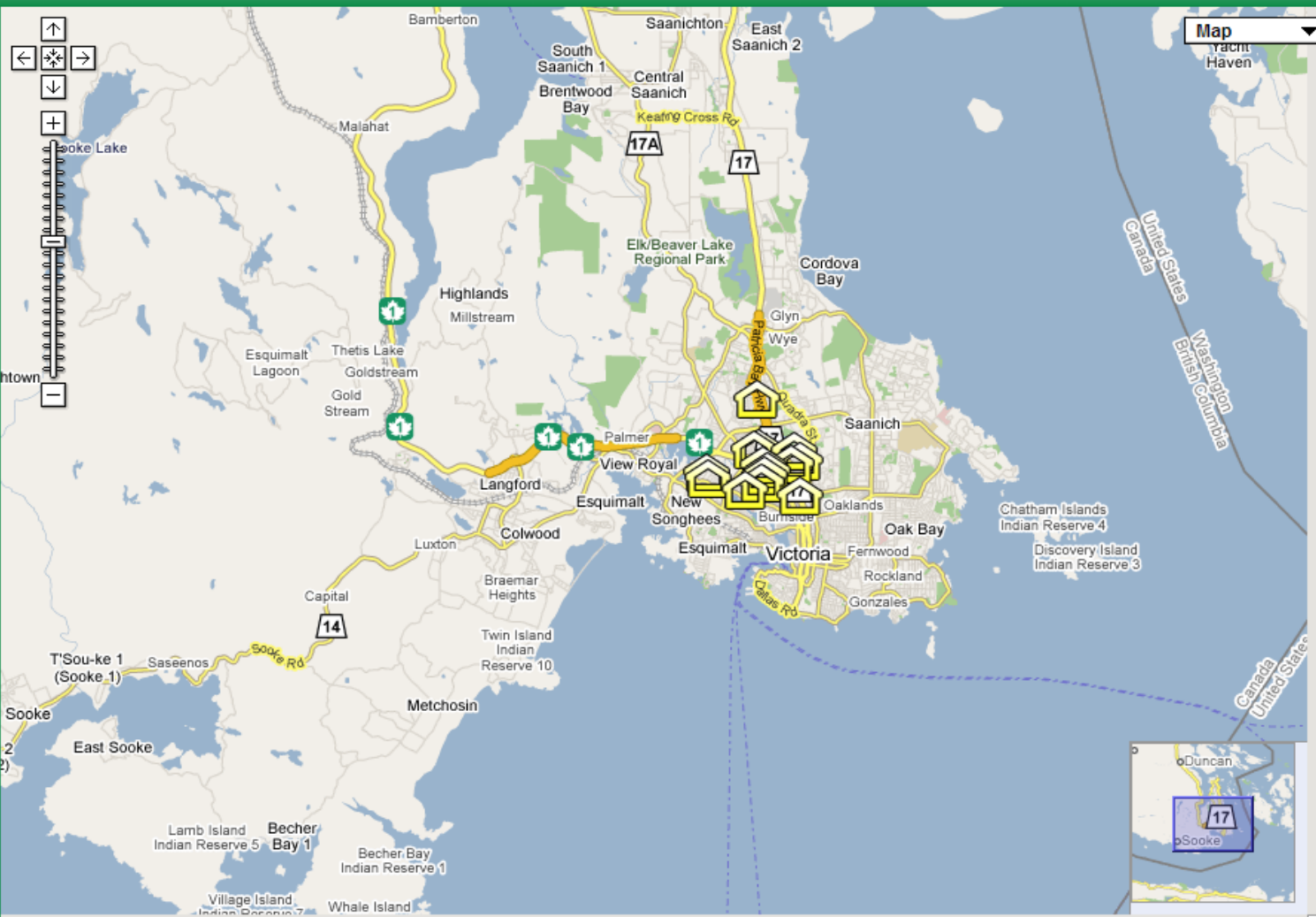
# Low Income Housing - Victoria (Demo)



## Welcome

Demo site for Geotec 2009 - Vancouver.

Site shows low income housing locations for Victoria. Try using the Find Nearby tool, or the Search by Category tool by clicking on the tabs at the bottom of this window. Click on a house icon to get more detail.



- Find Nearby
- Search By Category



# Low Income Housing - Victoria (Demo)



Welcome

Find Nearby

What do you want to search for?

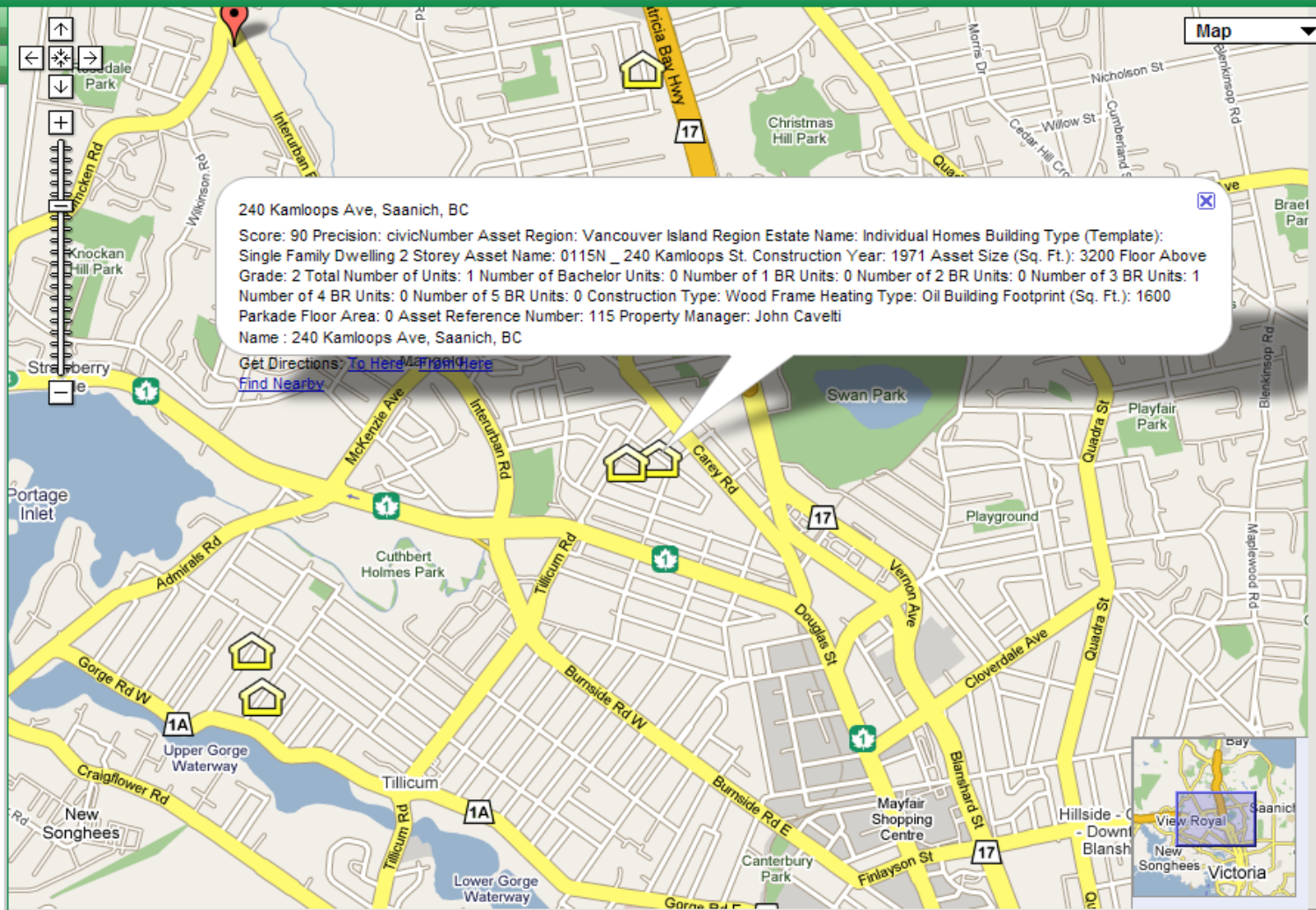
Housing

Select your buffer distance from your location.

3 Kilometers

Search Clear Results

- 4137 Hawkes Ave, 1.8 Kilometers, Saanich, BC
- 270 Nicola Pl, 2.5 Kilometers, Saanich, BC
- 240 Kamloops Ave, 2.6 Kilometers, Saanich, BC
- 2870 Austin Ave, 2.7 Kilometers, Saanich, BC
- 2850 Dysart Rd, 2.9 Kilometers, Saanich, BC



Search By Category



# Low Income Housing - Victoria (Demo)



Enter an Address

Welcome

Find Nearby

Search By Category

What do you want to search for?

Housing

Refine Search Results By Type

Name

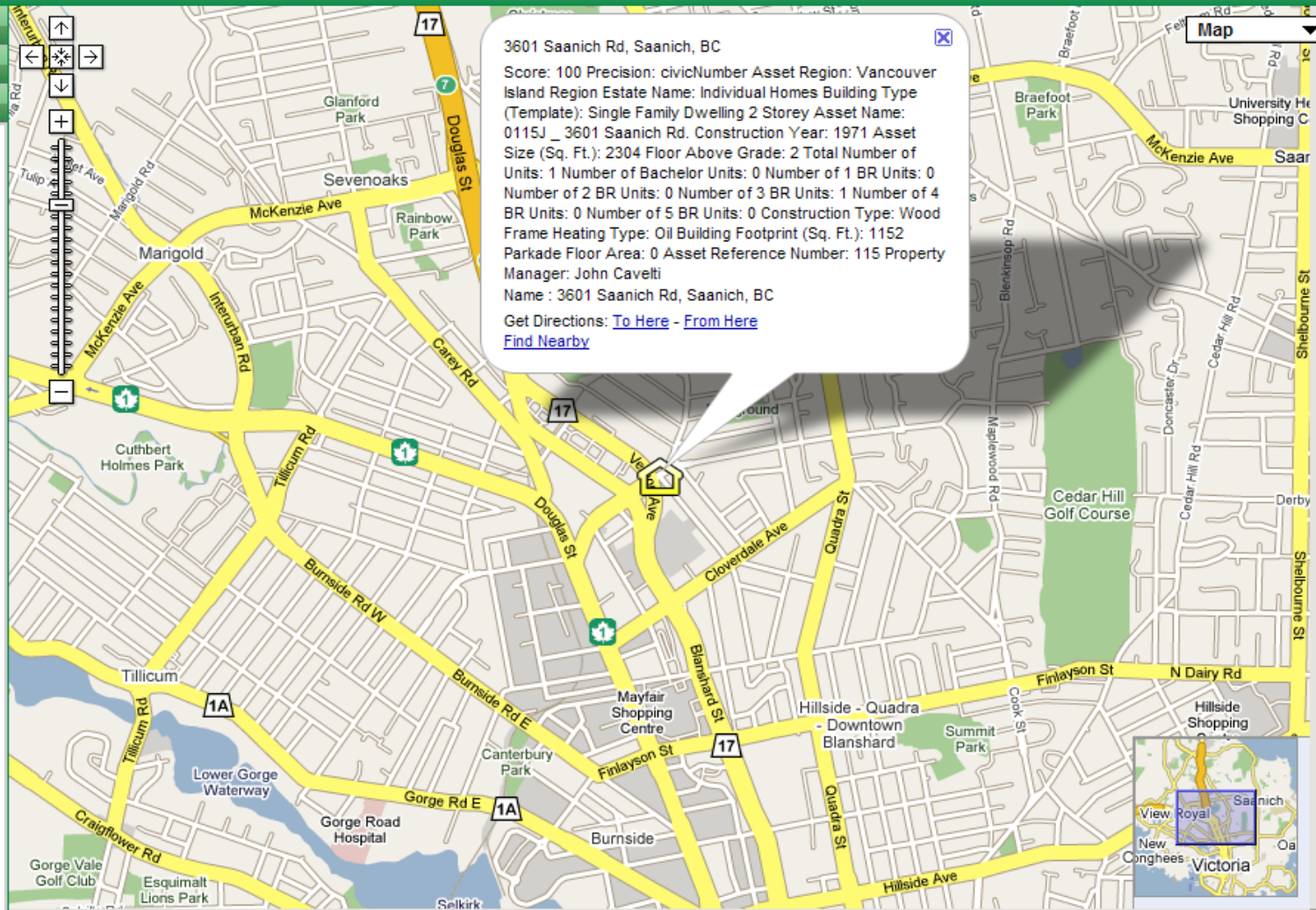
3601 Saanich Rd, Saanich, BC

Further Refine Results

--Select a Value--

Clear Results

3601 Saanich Rd, Saanich, BC



**3601 Saanich Rd, Saanich, BC**

Score: 100 Precision: civicNumber Asset Region: Vancouver Island Region Estate Name: Individual Homes Building Type (Template): Single Family Dwelling 2 Storey Asset Name: 0115J\_3601 Saanich Rd. Construction Year: 1971 Asset Size (Sq. Ft.): 2304 Floor Above Grade: 2 Total Number of Units: 1 Number of Bachelor Units: 0 Number of 1 BR Units: 0 Number of 2 BR Units: 0 Number of 3 BR Units: 1 Number of 4 BR Units: 0 Number of 5 BR Units: 0 Construction Type: Wood Frame Heating Type: Oil Building Footprint (Sq. Ft.): 1152 Parkade Floor Area: 0 Asset Reference Number: 115 Property Manager: John Cavelti  
Name : 3601 Saanich Rd, Saanich, BC  
Get Directions: [To Here](#) - [From Here](#)  
[Find Nearby](#)



# Hazardous Waste sites - Lower Mainland Region - Ministry of Environment



Enter an Address

Welcome

Search By Category

What do you want to search for?

Hazwaste sites

Refine Search Results By Type

CLIENT

- Select a Value--
- SUMAS ENVIRONMENTAL SERVICE
- NEWALTA CORPORATION
- PACIFIC METALS LTD.
- METALEX PRODUCTS LTD.
- CLEAN HARBORS CANADA INC.
- PETRO CANADA PRODUCTS
- IMPERIAL OIL LIMITED
- BRITISH COLUMBIA HYDRO AND BC RAIL LTD.
- S & R SAWMILLS LTD.
- JACK CEWE LIMITED
- STELLA-JONES INC.
- LAING PROPERTY CORPORATION
- THE UNIVERSITY OF BRITISH C
- THE BRITISH COLUMBIA INSTIT**
- POWER BATTERY SALES LTD.
- SIMON FRASER UNIVERSITY
- EXIDE CANADA INC.
- 7437 HOLDINGS LTD.
- ALPHA MANUFACTURING INC.
- MINISTER OF ENVIRONMENT, LA
- BEAVER ELECTRICAL MACHINERY
- OPB REALTY (BRENTWOOD) INC.
- CAMBRIDGE LEASEHOLDS LIMITE
- NU LIFE INDUSTRIES INC.
- TRI-ARROW INDUSTRIAL RECOVER
- COLUMBIA BITULITHIC LIMITED
- CITY OF BURNABY
- BC LANDS

